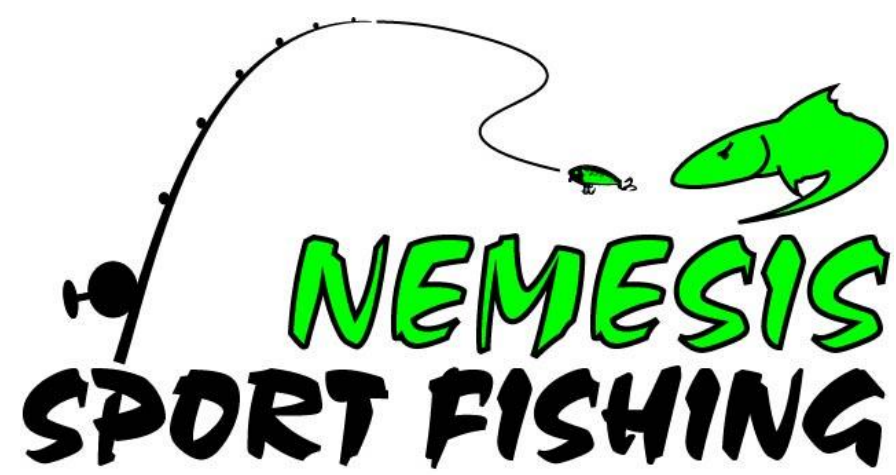


Reel In Results: Leveraging your Electronics to Catch More Fish



Home Ports: Erie, PA & Wilson, NY
Boats: 3100 Tiara Open LE
2700 Tiara Pursuit
252 Sport Craft

Captain Joe Nemet



www.FishNemesis.com



Tournaments Lake Erie & Lake Ontario

2023

- Spring King of the Lake Day 1 3rd, 7th overall
- Wilson Harbor Invitational 1st overall, 1st A-Tom-Mik Challenge
- Summer Slam Day 2 4th, 6th Overall
- Offshore Challenge Day 1 1st
- Fall Trout Challenge 1st



<https://www.facebook.com/nemetsportfishing/>



Chart Plotter

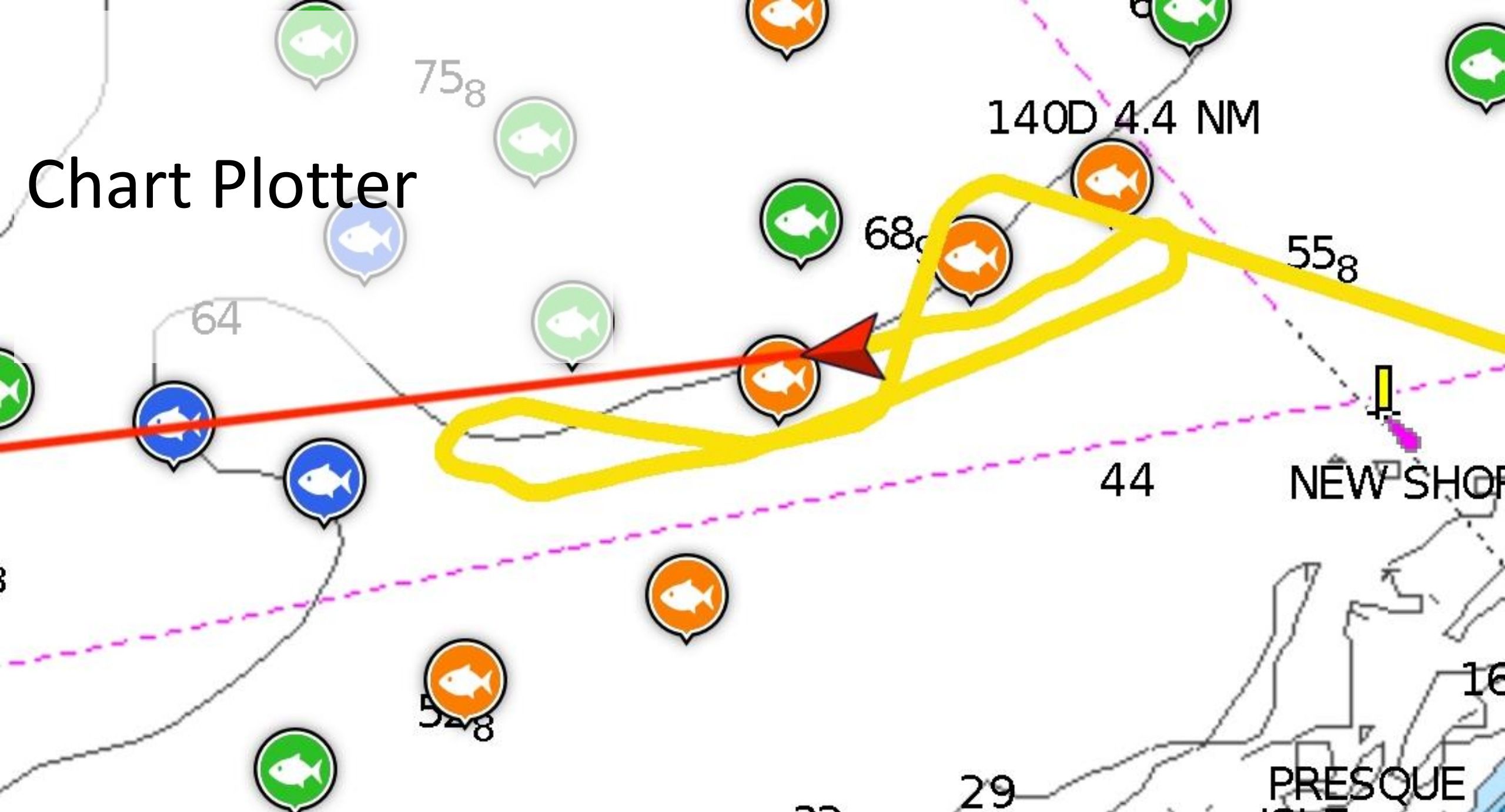
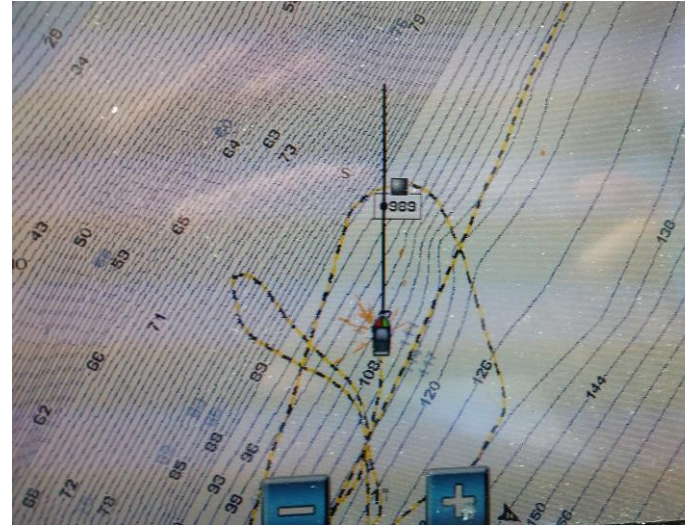


Chart Plotter Options

- Built in chart plotters in multi-functional devices (MFDs)
 - Upgrade charts to have 1 foot contour lines



Phone Apps

- Navionics



<https://www.navionics.com/usa/apps/navionics-boating>

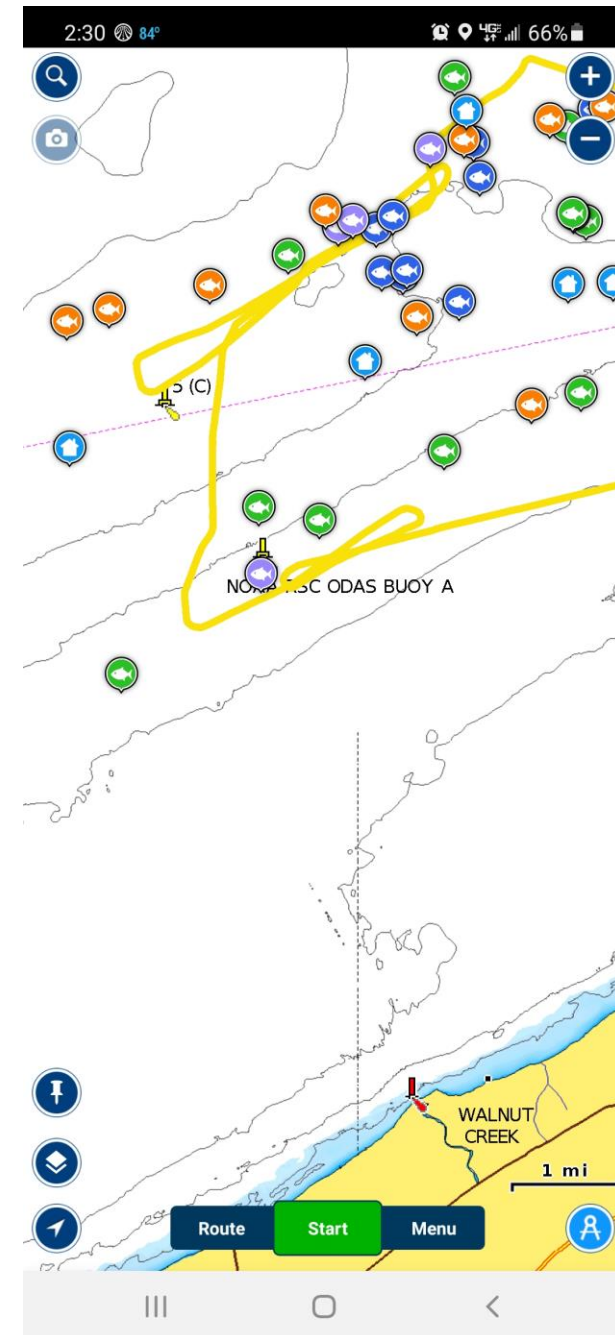
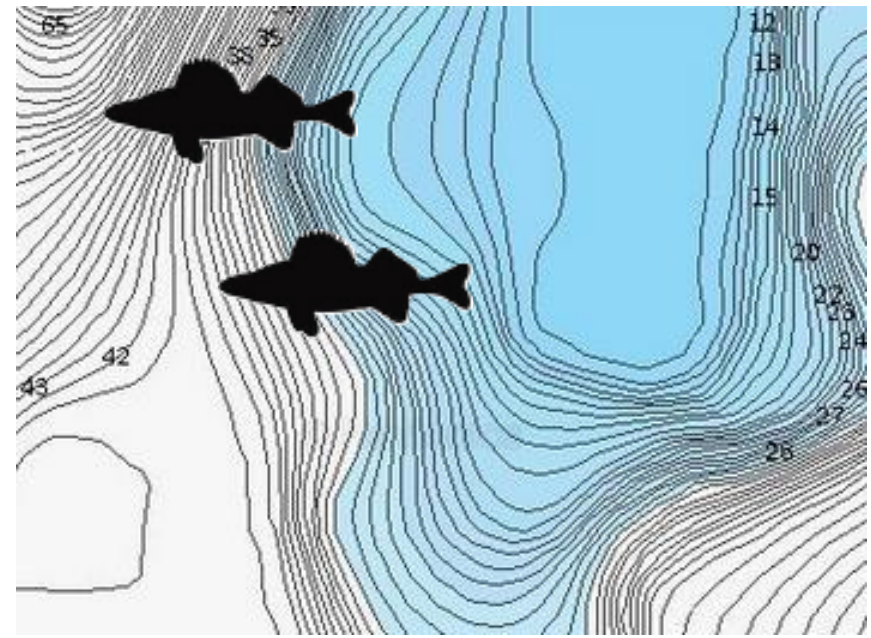


Chart Plotter Tips

- Enable most detailed charts
 - Lines closer together indicate larger depth changes



- Turn tracks on
 - Keep track of productive/unproductive water

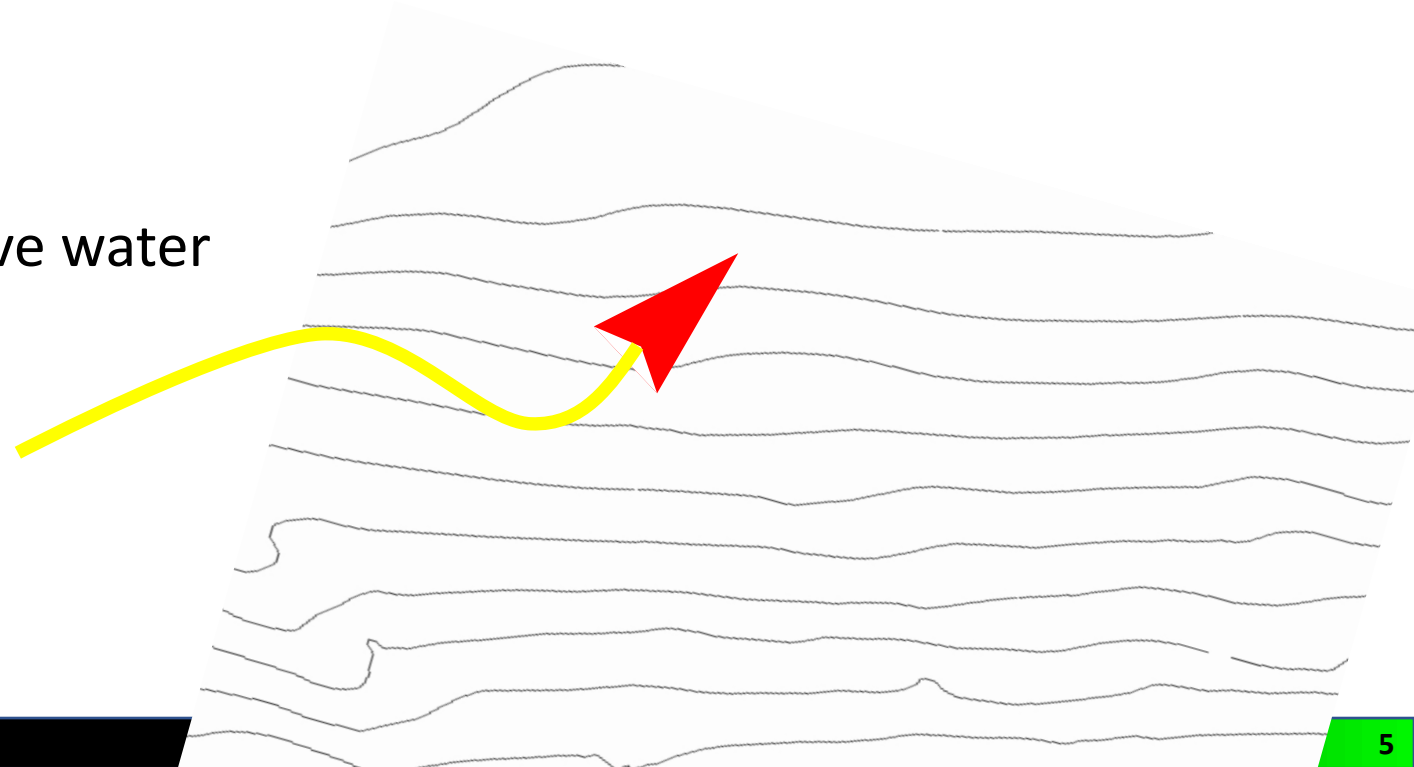
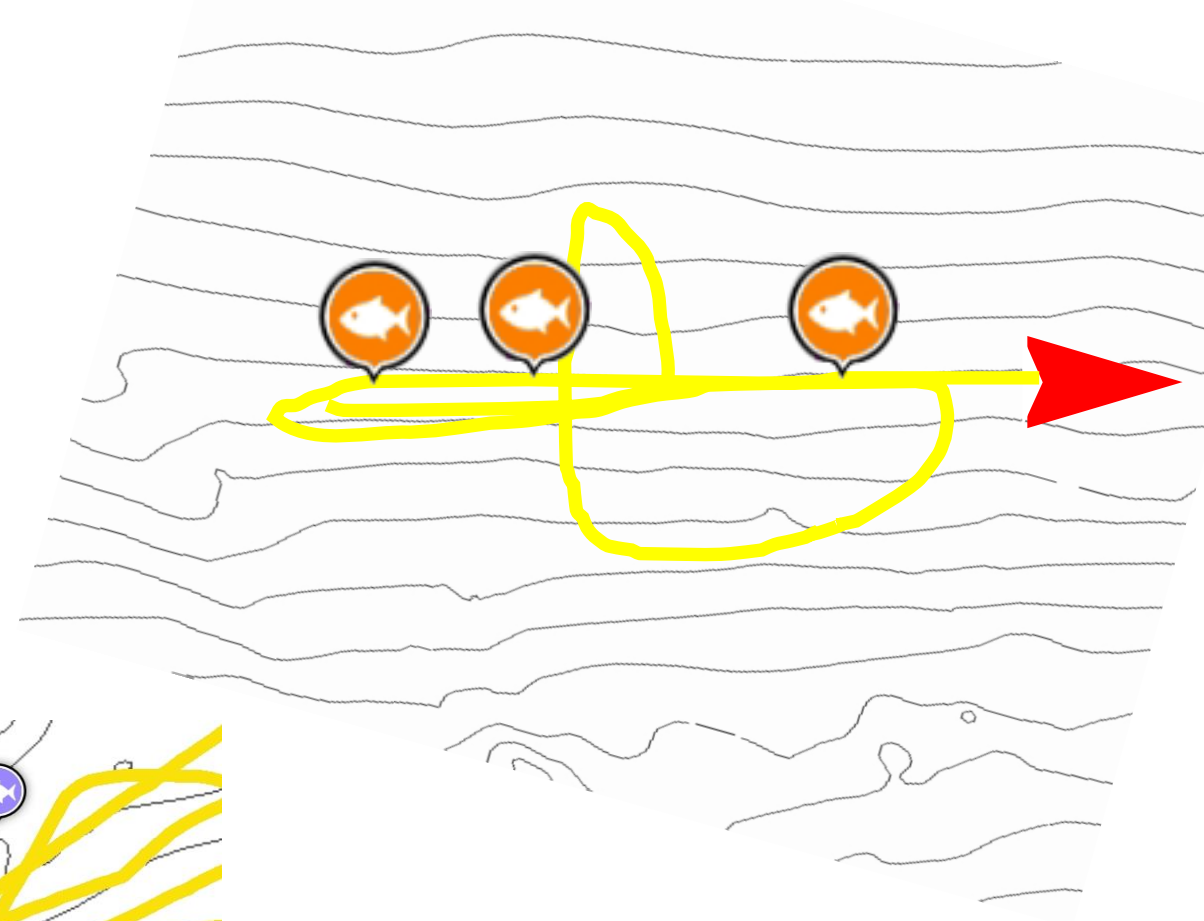
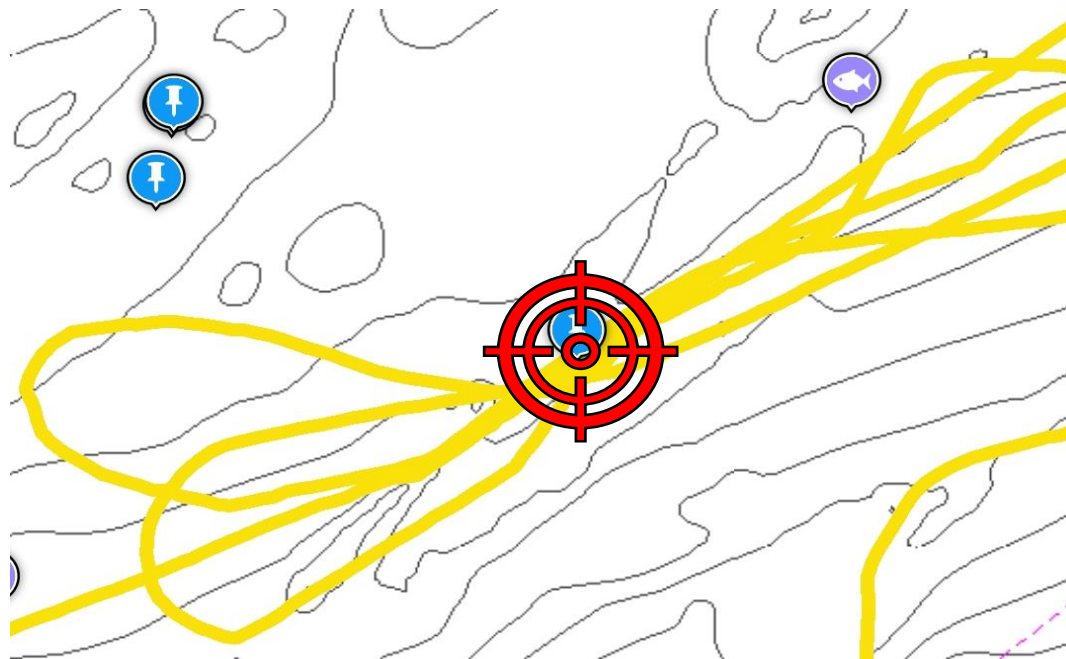


Chart Plotter Tips

- Drop wave points
 - Helps find patterns
 - Edit wave point names to reflect date



- Spot on spot fishing



Traditional Sonar

Depth

79 ft

Water

69.1° F

SOG

3.9 mph

25

45

65

85



High Chirp RV 3D Xdcr



ZOOM



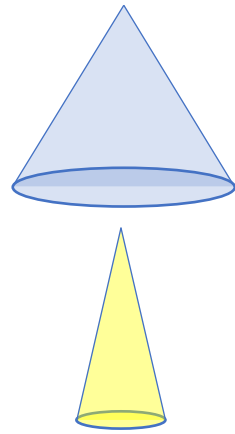
Traditional Sonar Basics

- Does NOT measure depth, measures the distance from the transducer



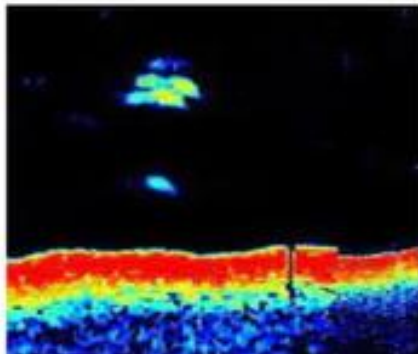
- Frequencies

- Low (83 kHz)
 - Larger bottom coverage
 - Better in shallow water
- High (200 kHz)
 - Less bottom coverage
 - Better in deeper water

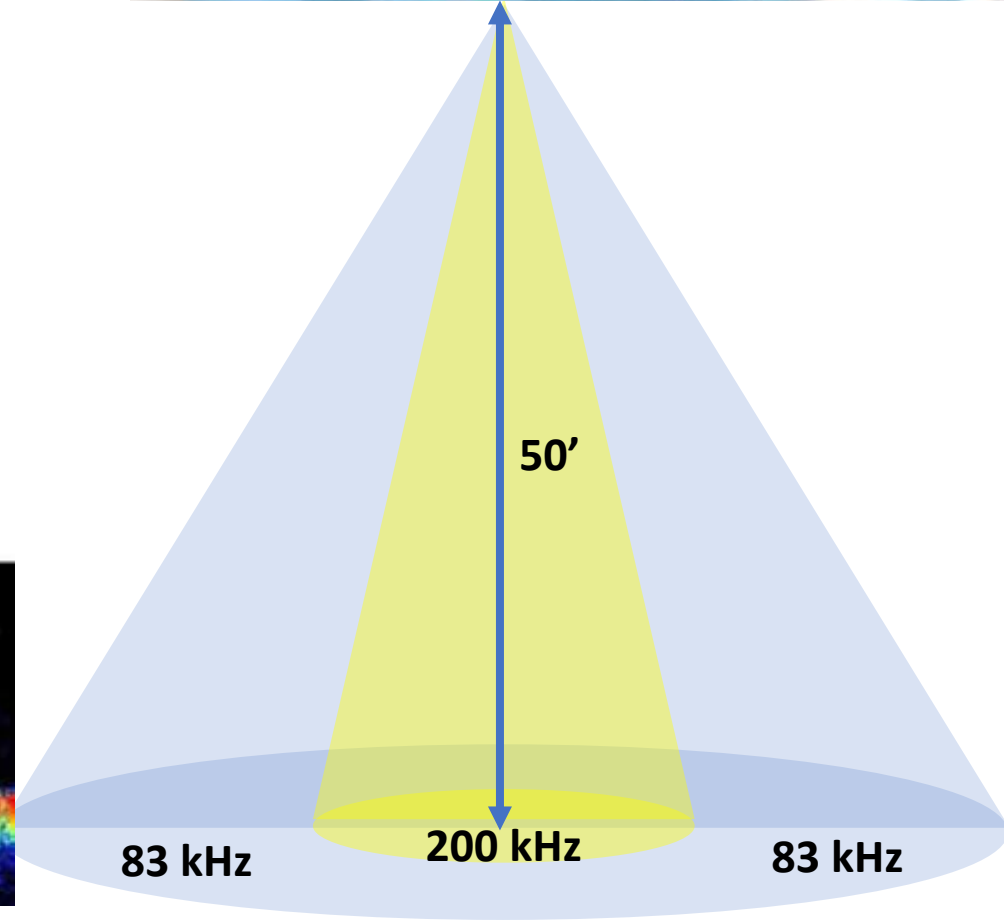
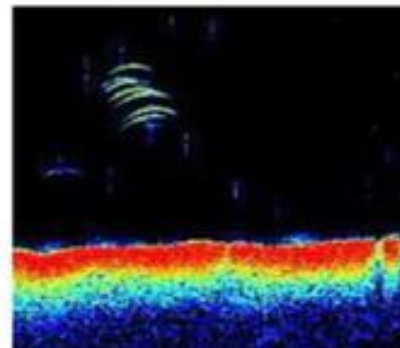


- Chirp
 - Higher definition

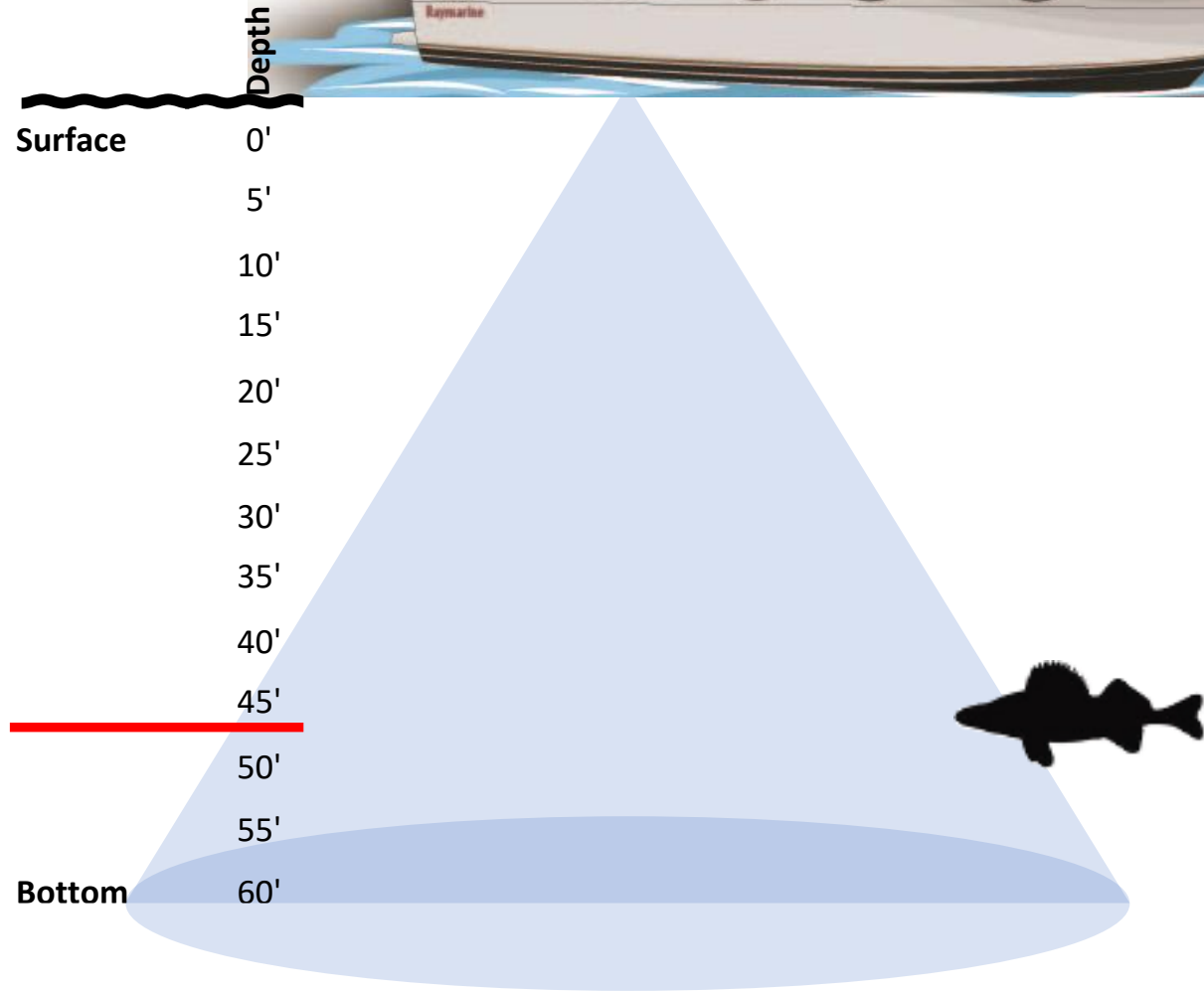
Single Frequency



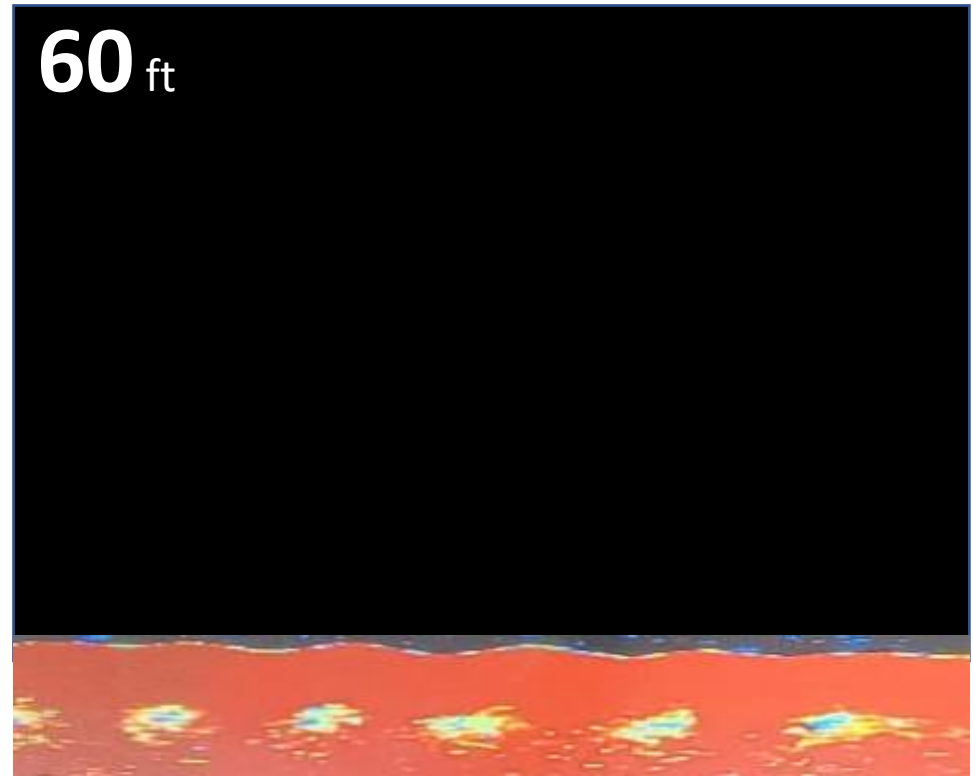
Chirp



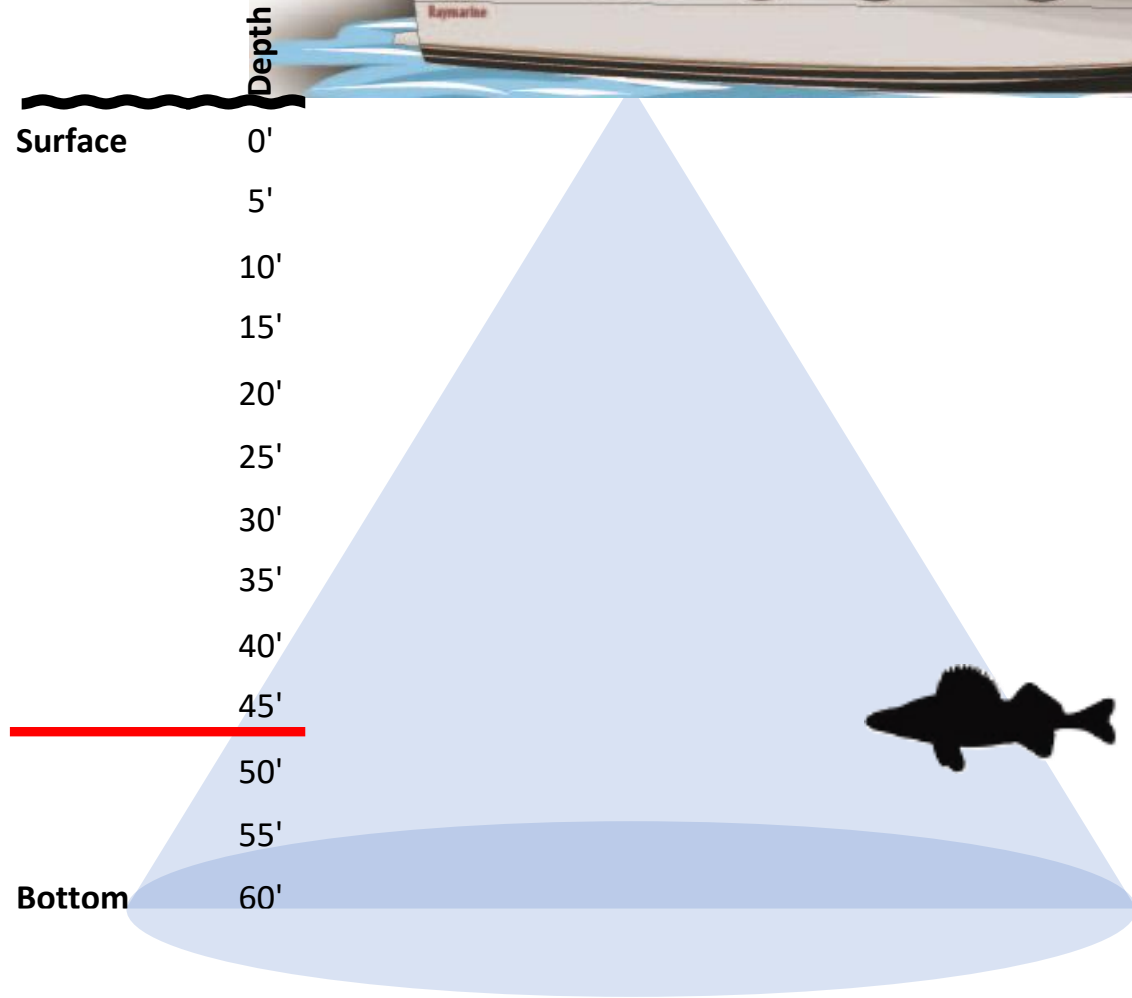
Traditional Sonar Fish Arches



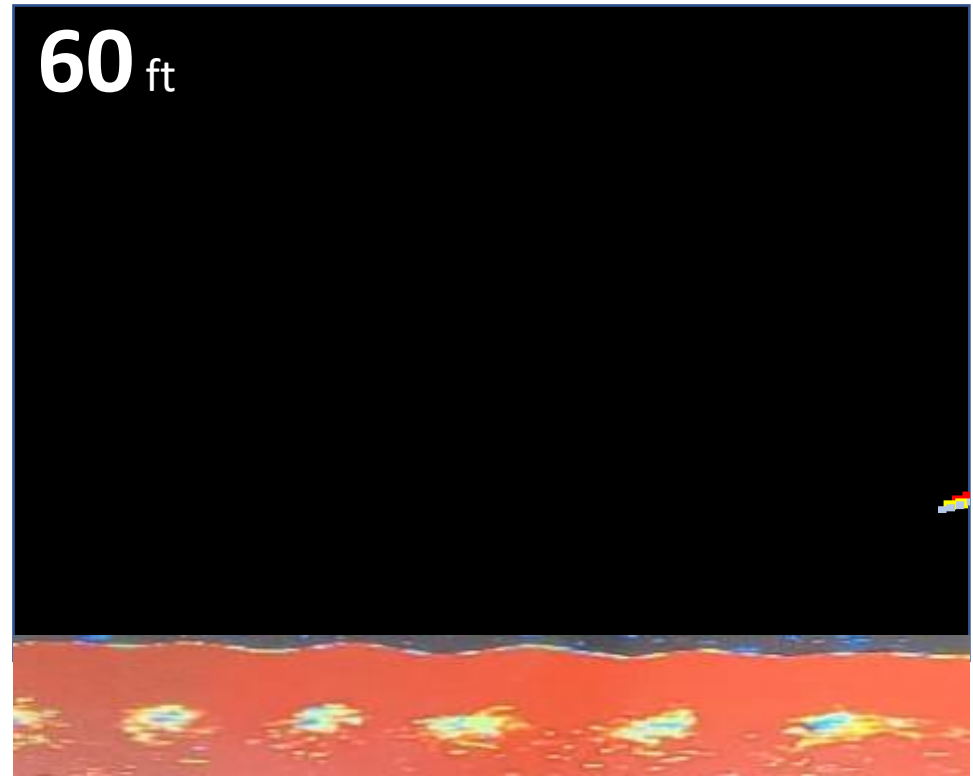
Depth



Traditional Sonar Fish Arches



Depth

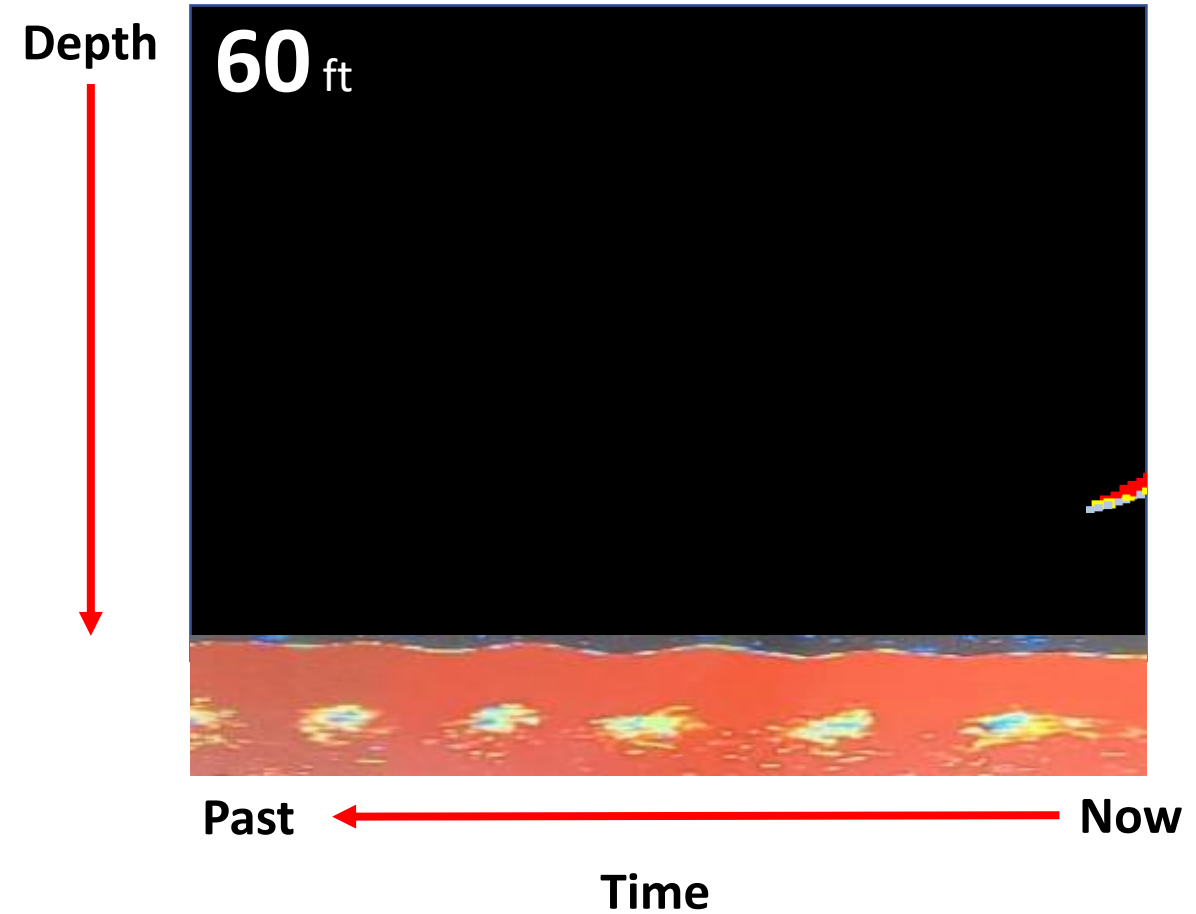
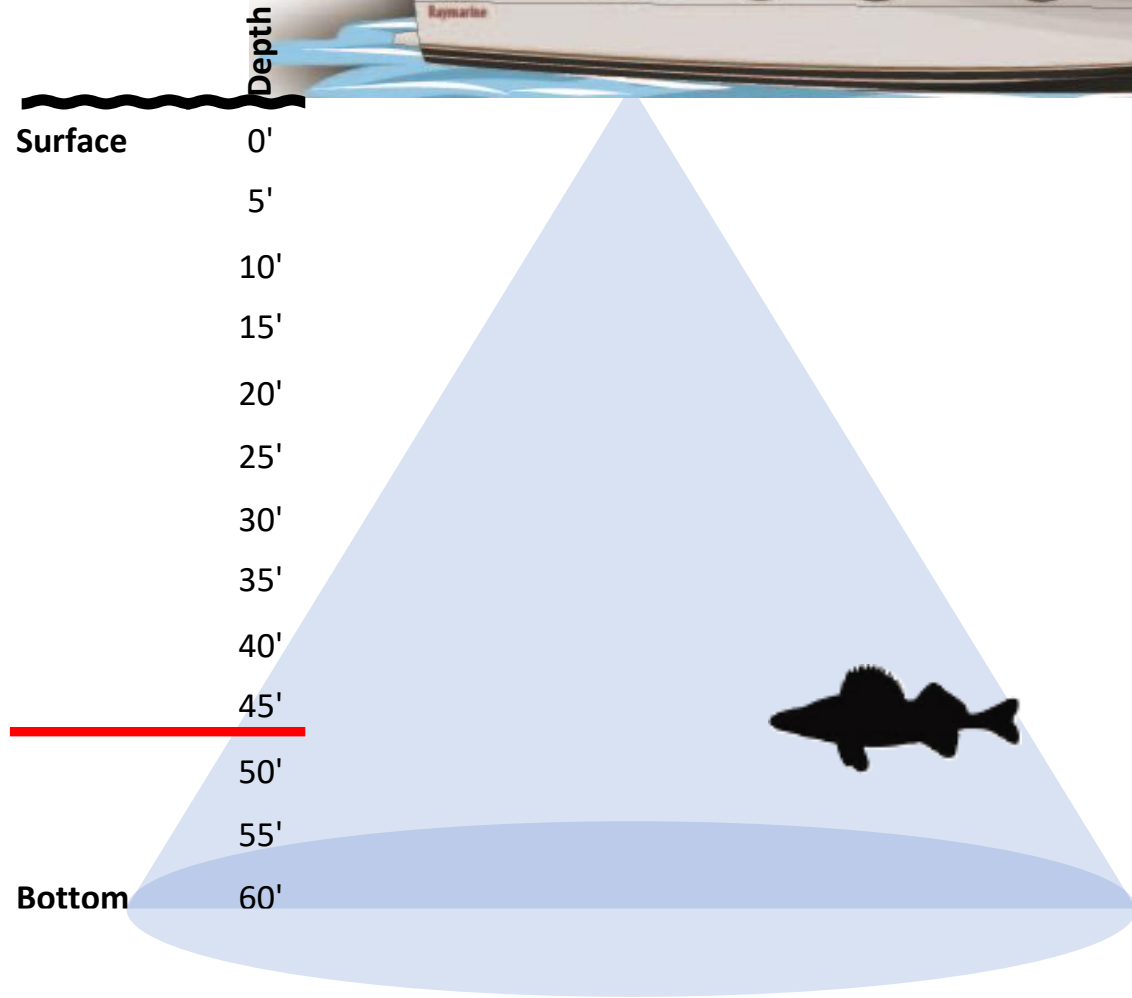


Past

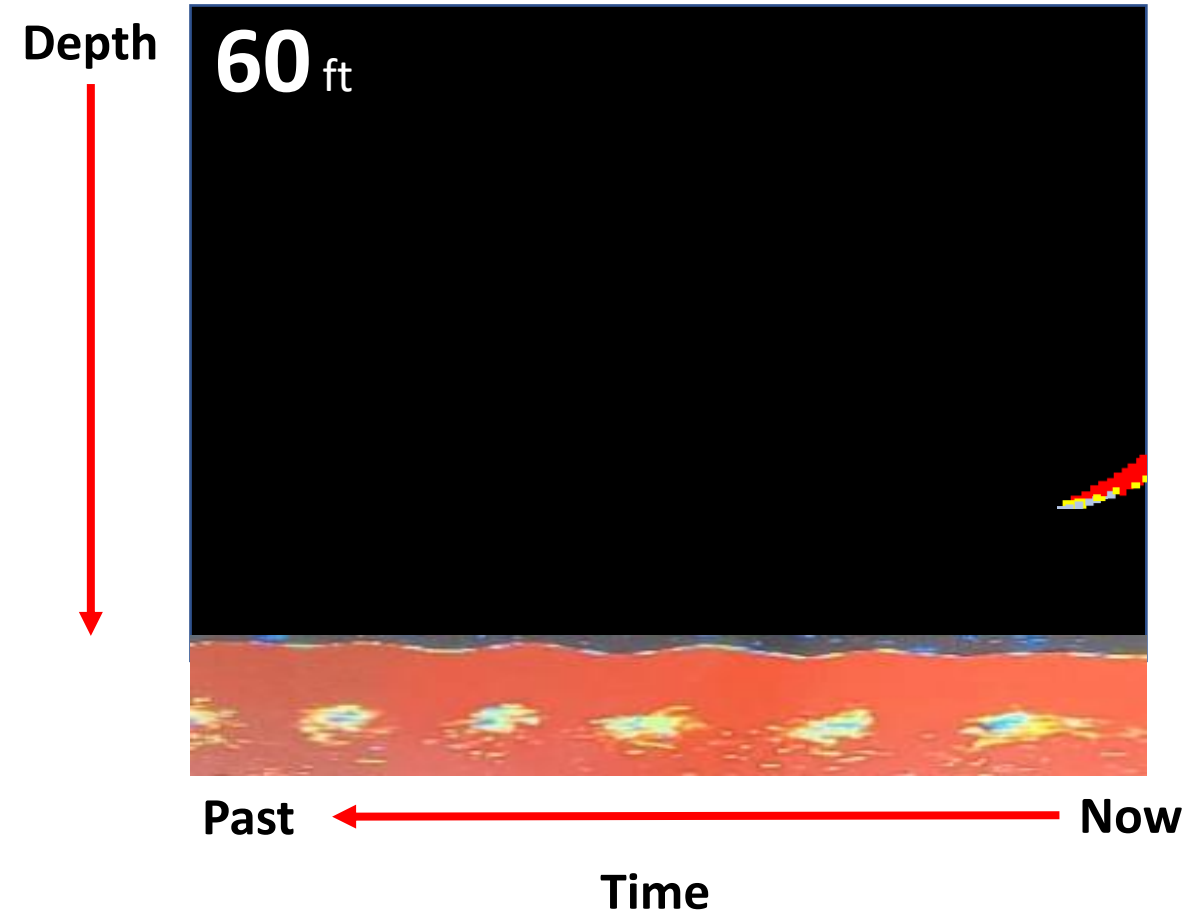
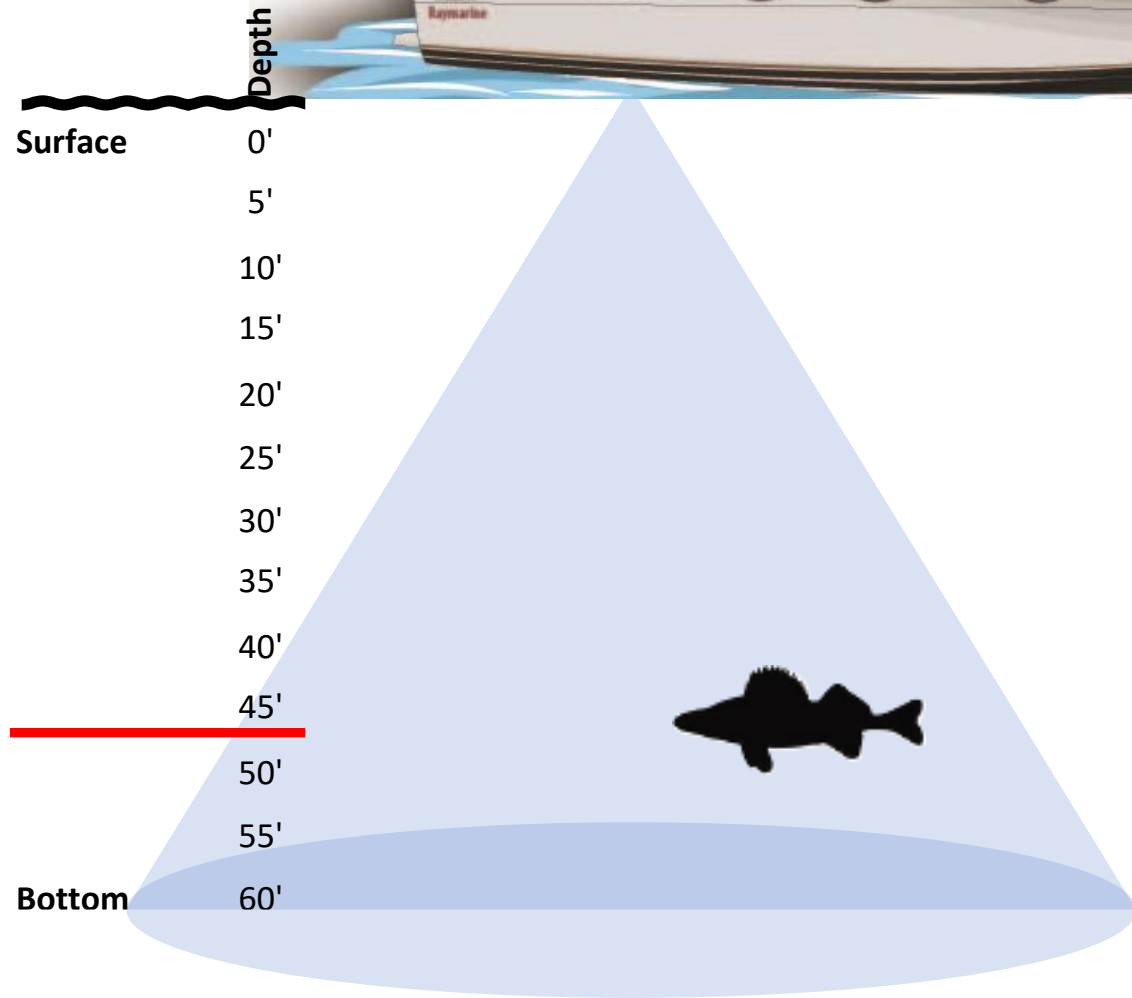
Now

Time

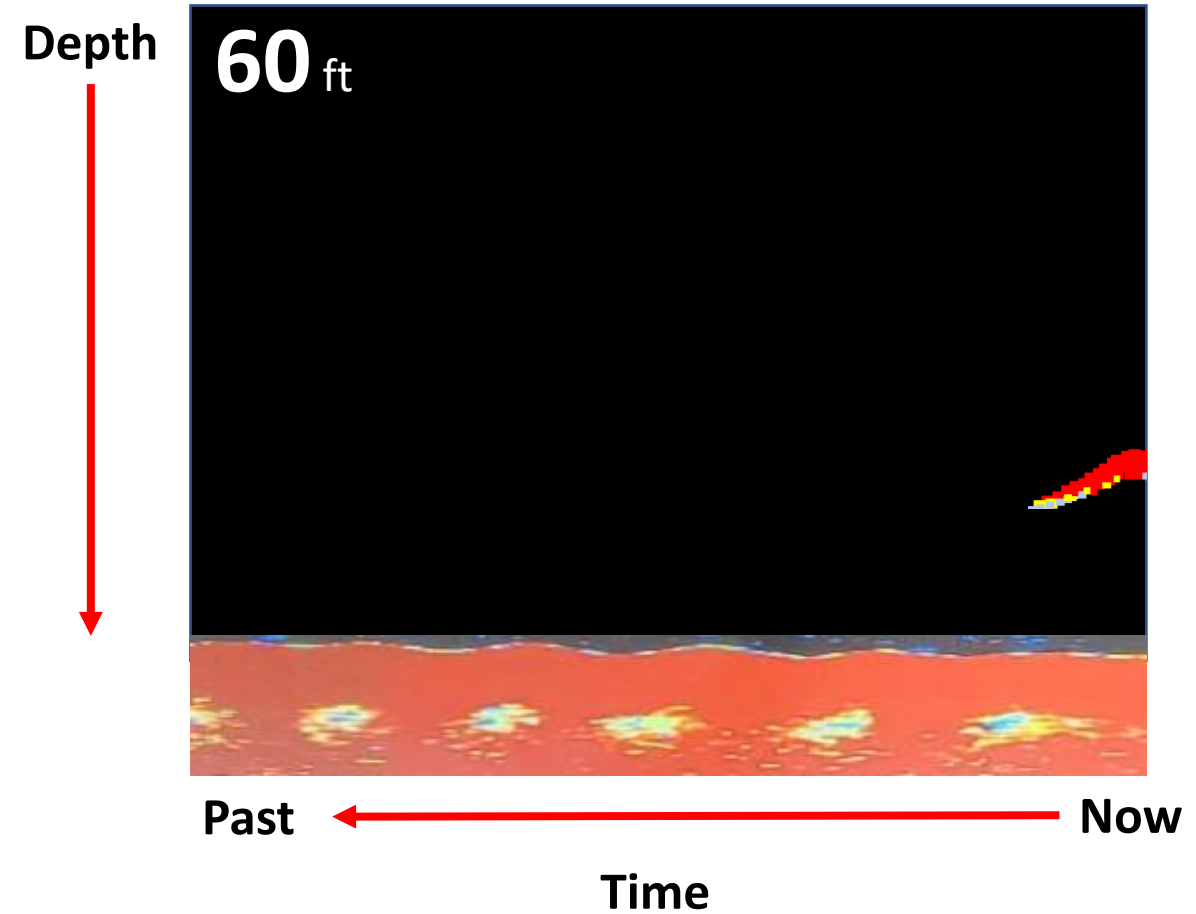
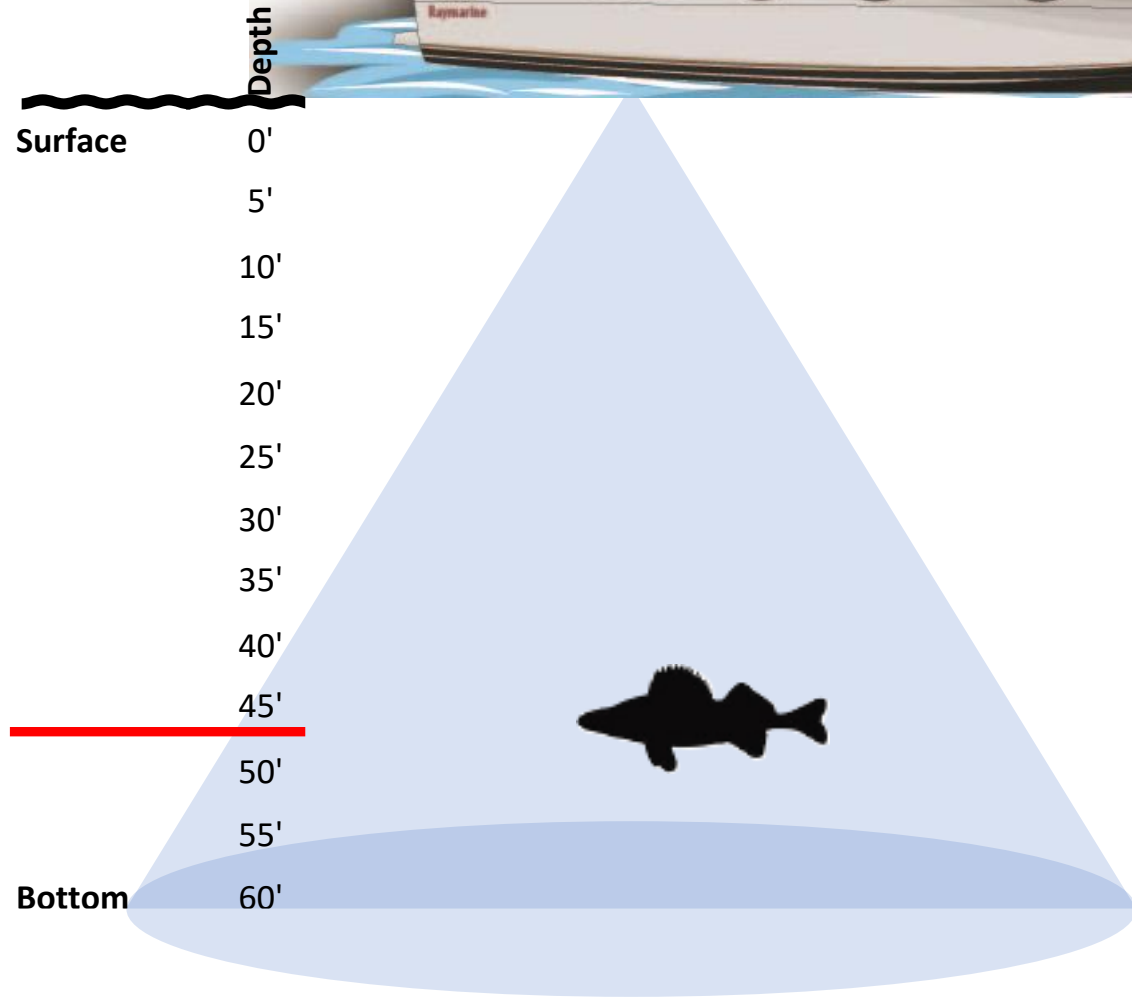
Traditional Sonar Fish Arches



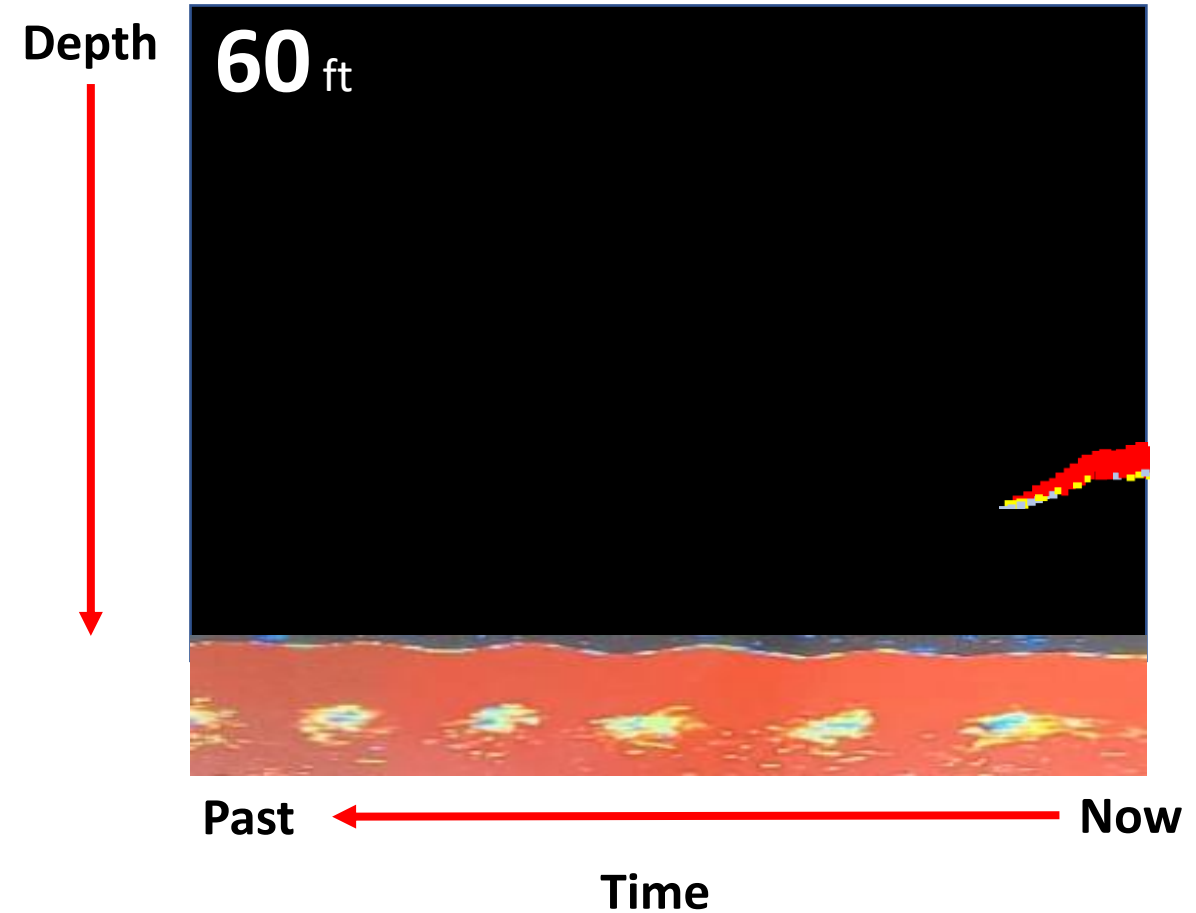
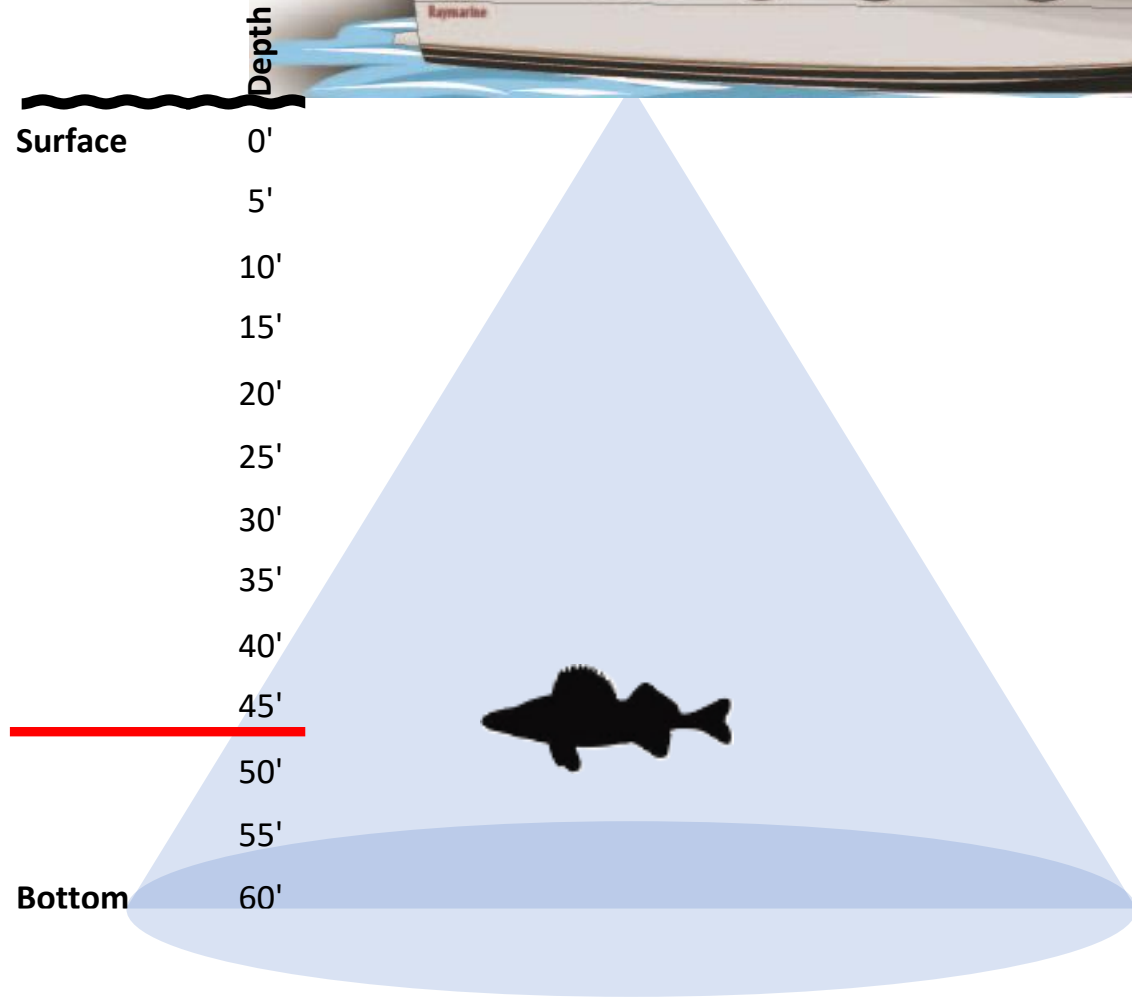
Traditional Sonar Fish Arches



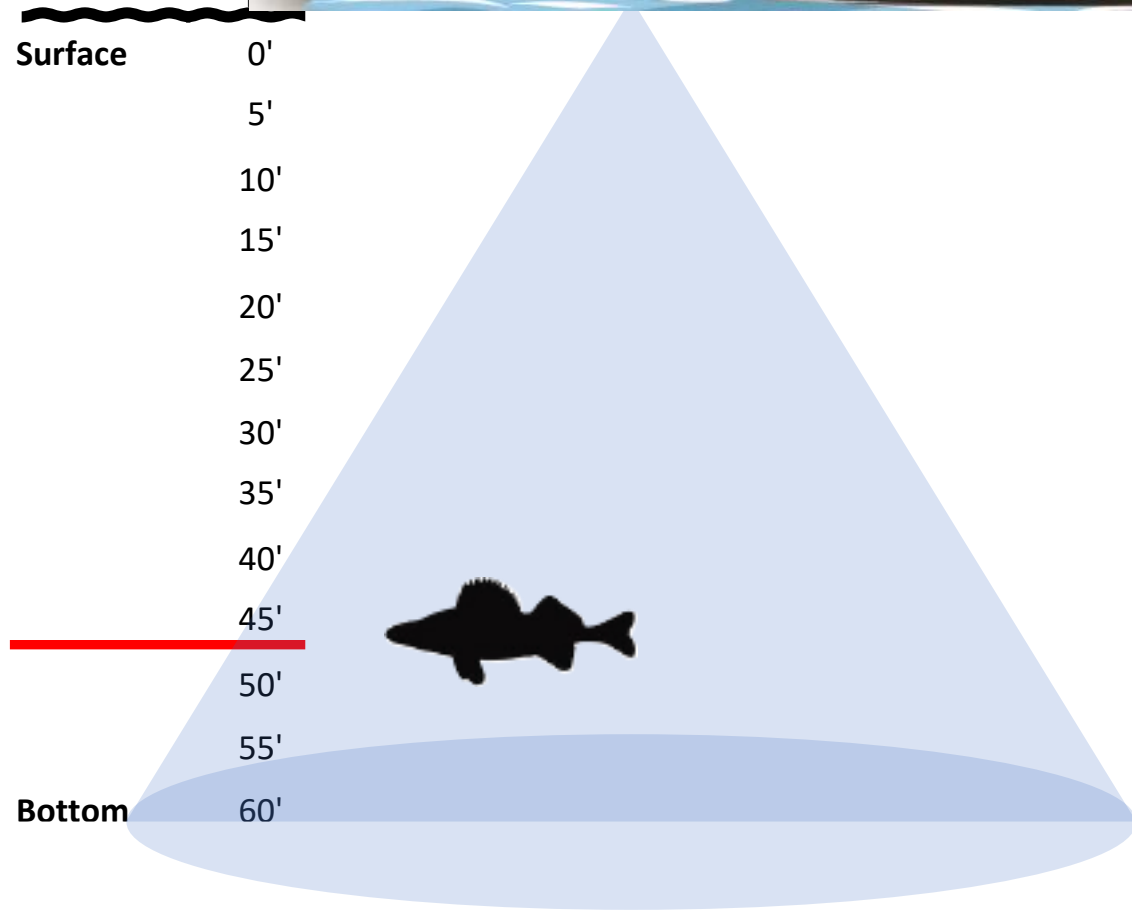
Traditional Sonar Fish Arches



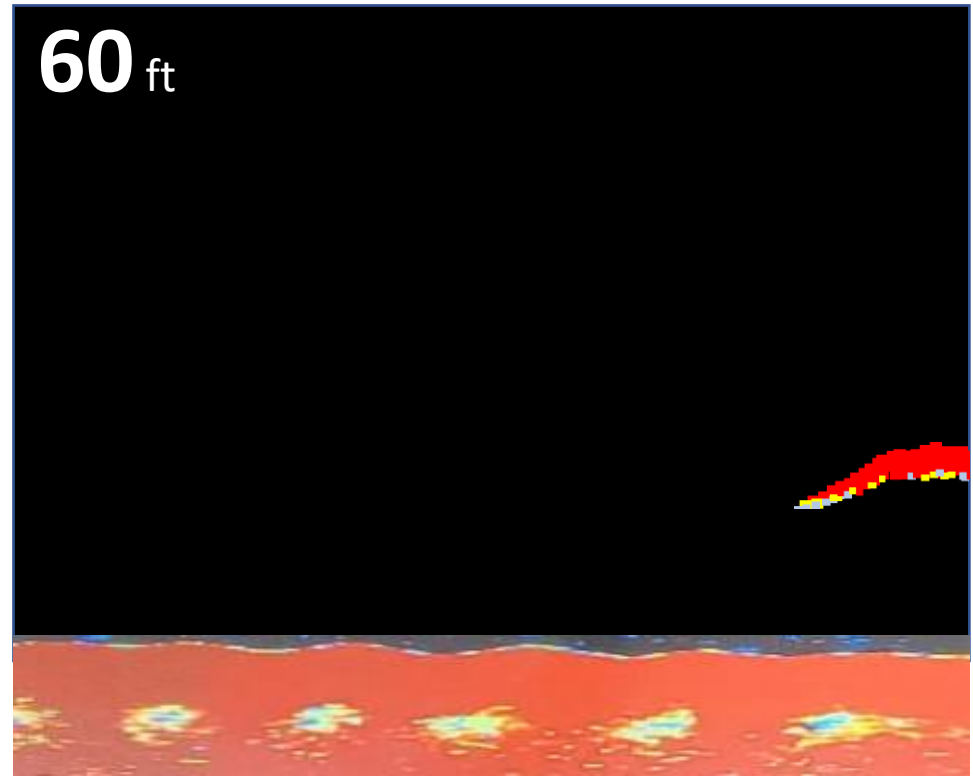
Traditional Sonar Fish Arches



Traditional Sonar Fish Arches

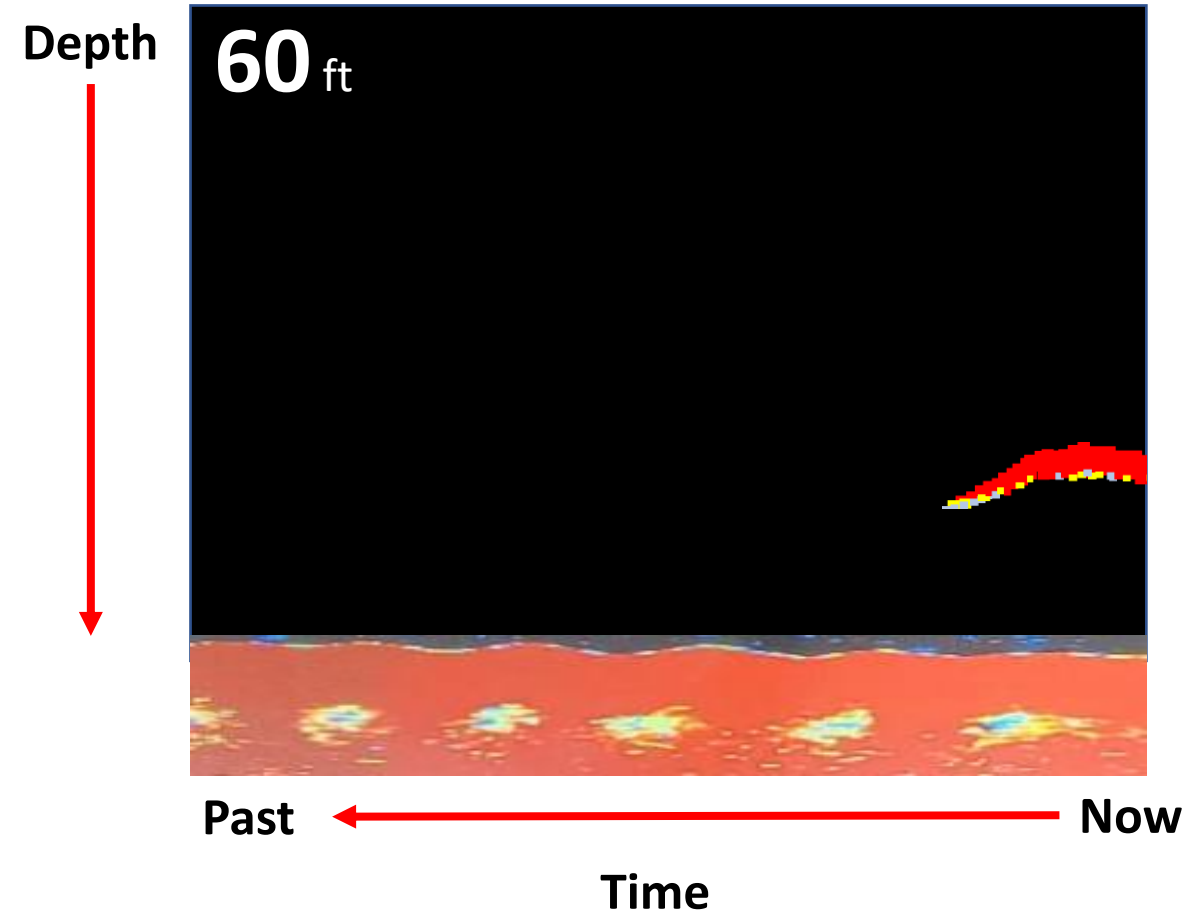
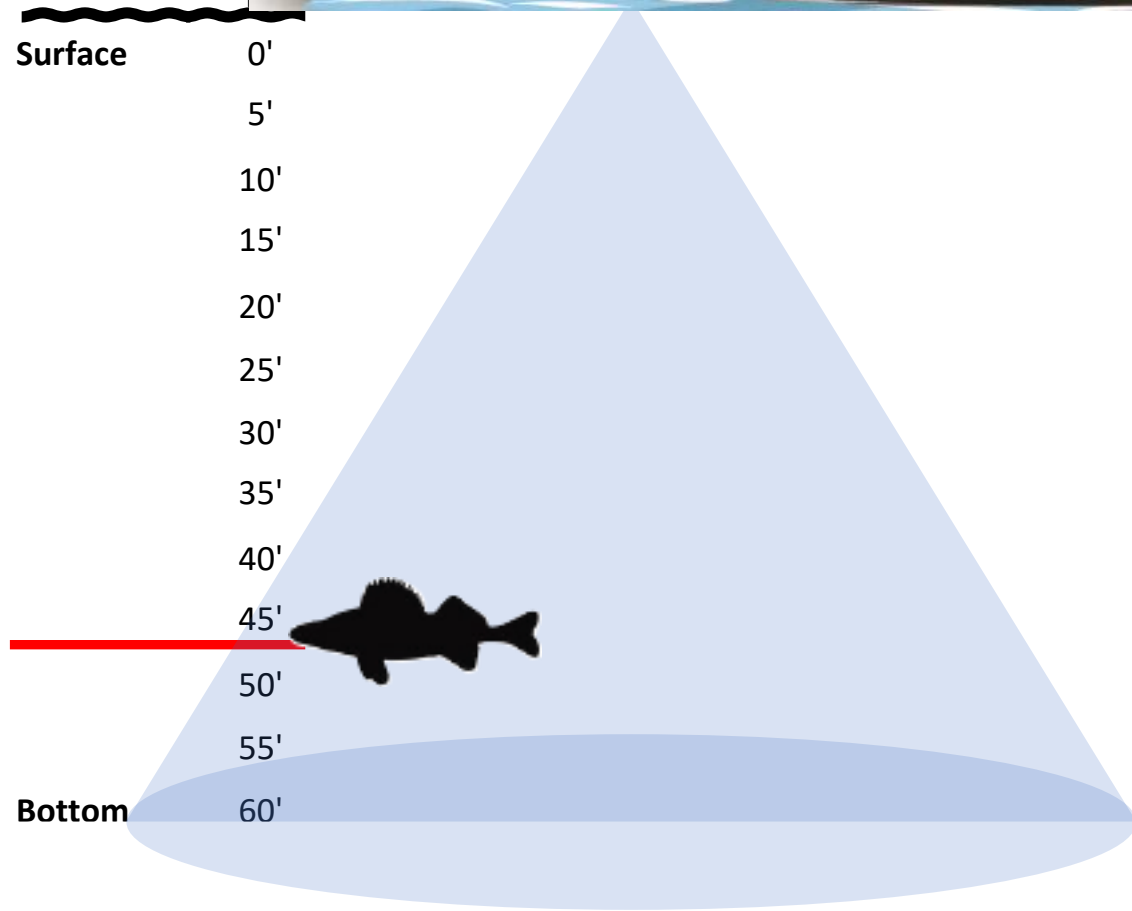


Depth

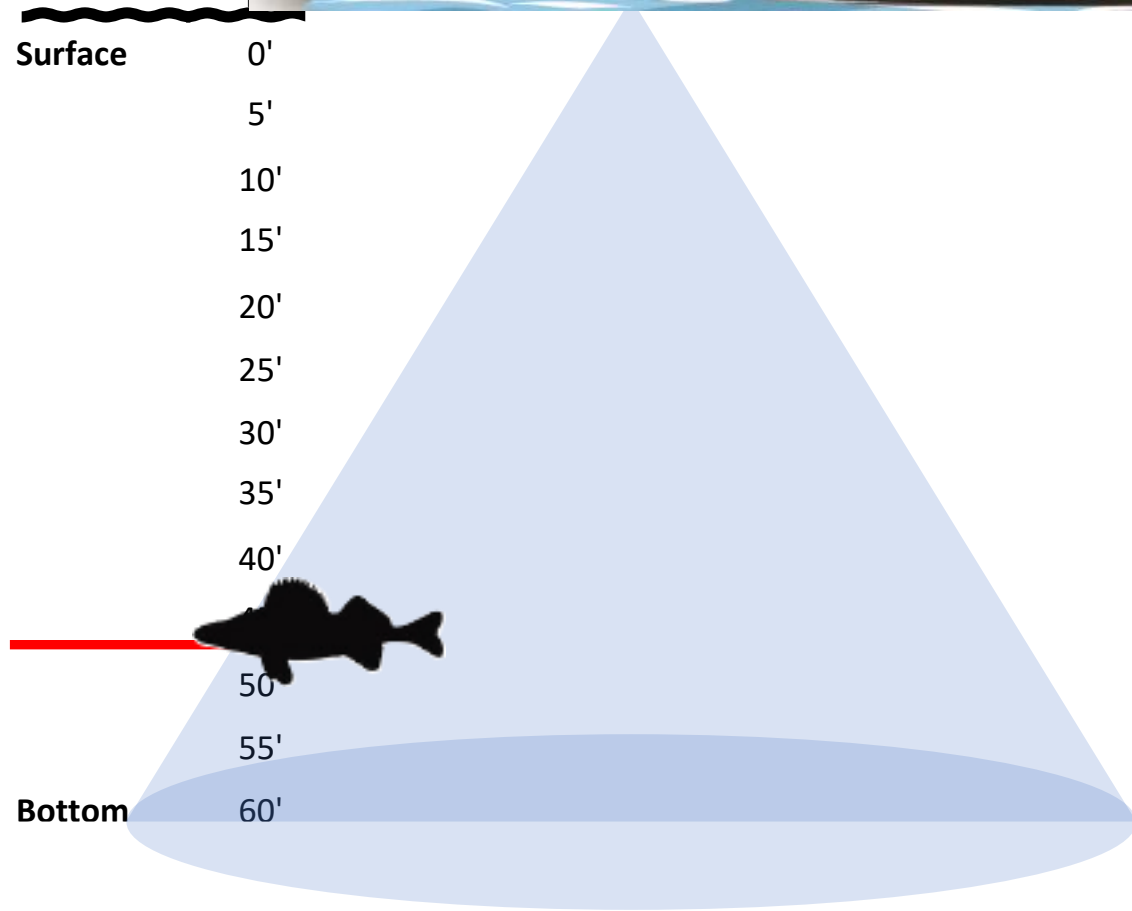


Time

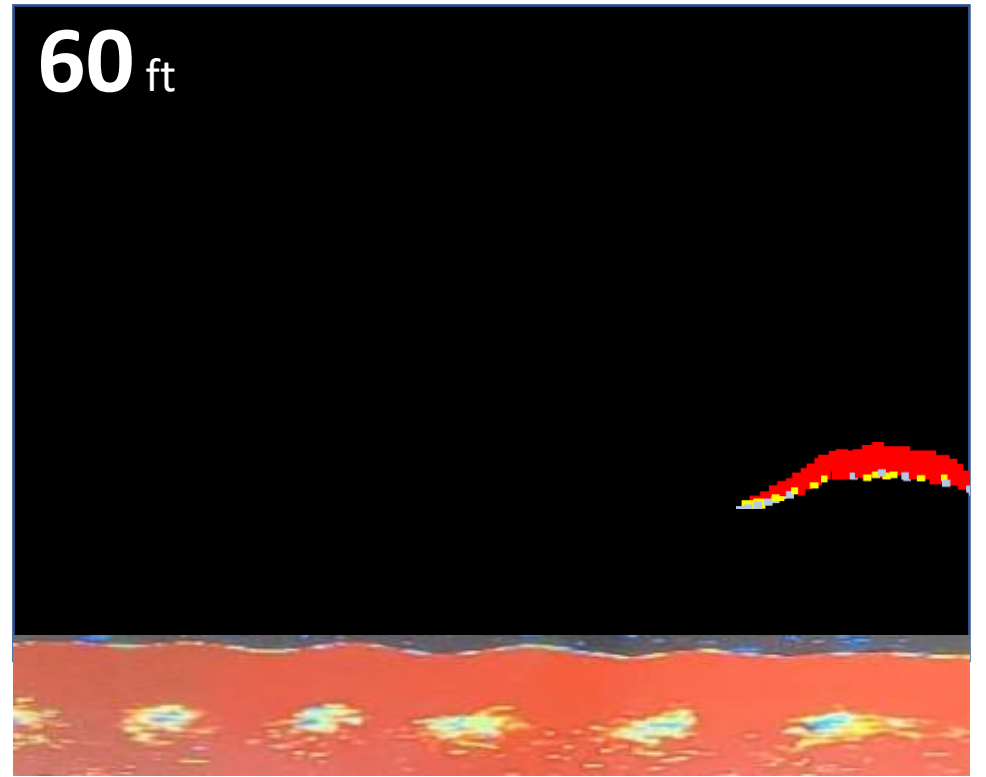
Traditional Sonar Fish Arches



Traditional Sonar Fish Arches



Depth

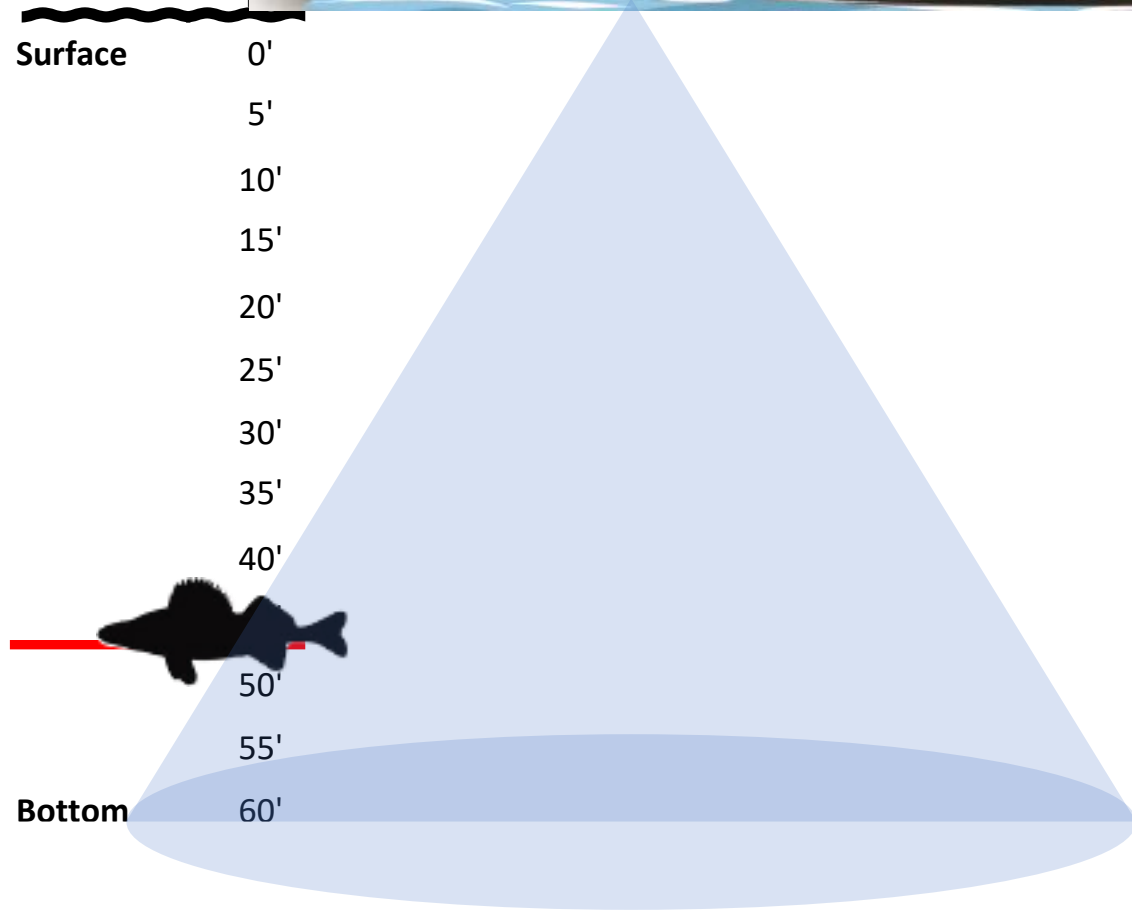


Past

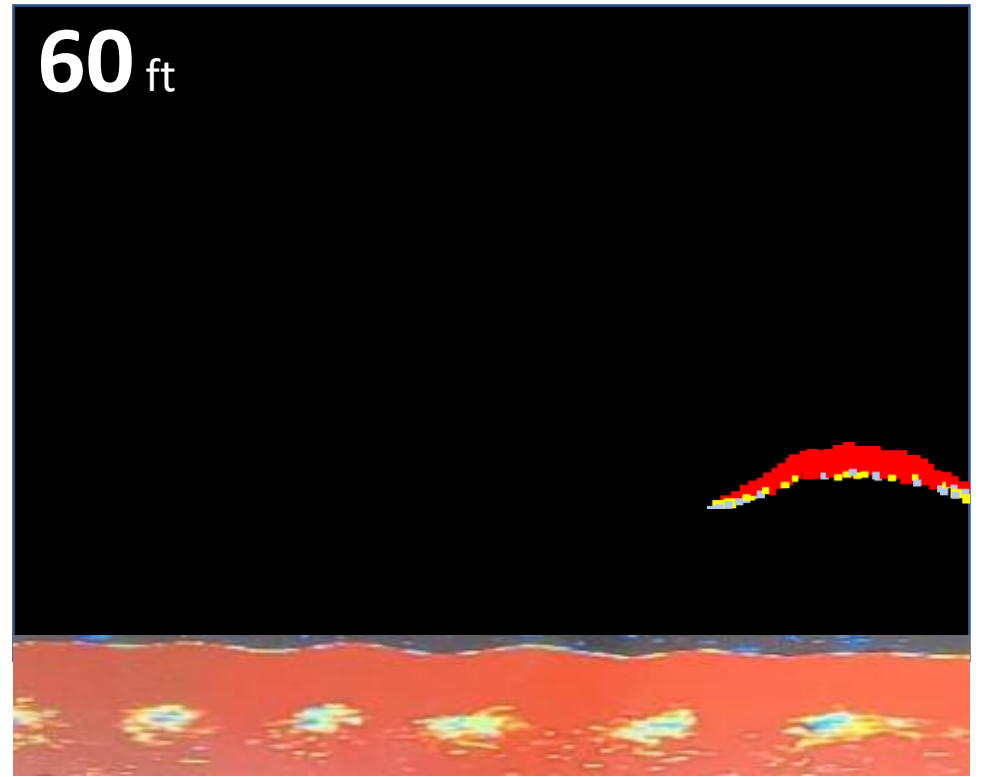
Now

Time

Traditional Sonar Fish Arches



Depth

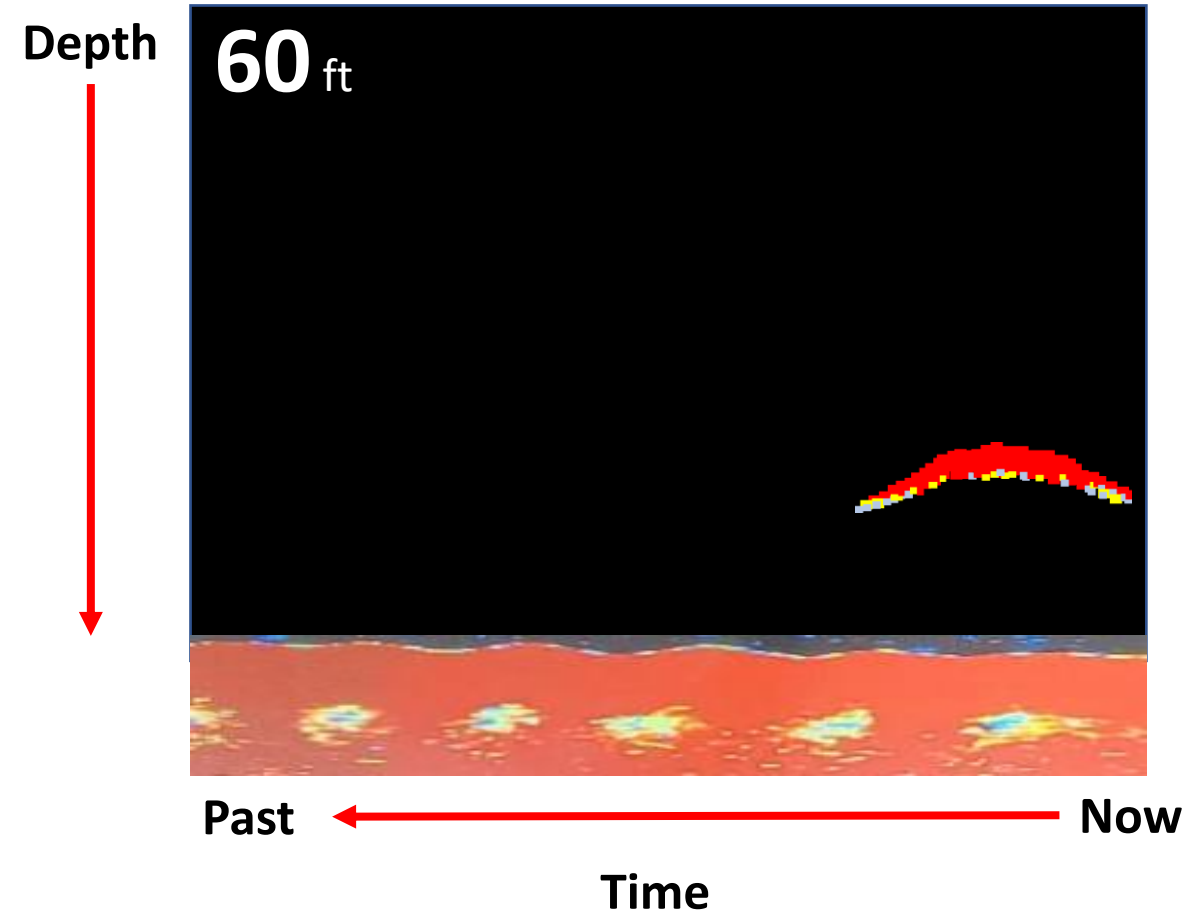
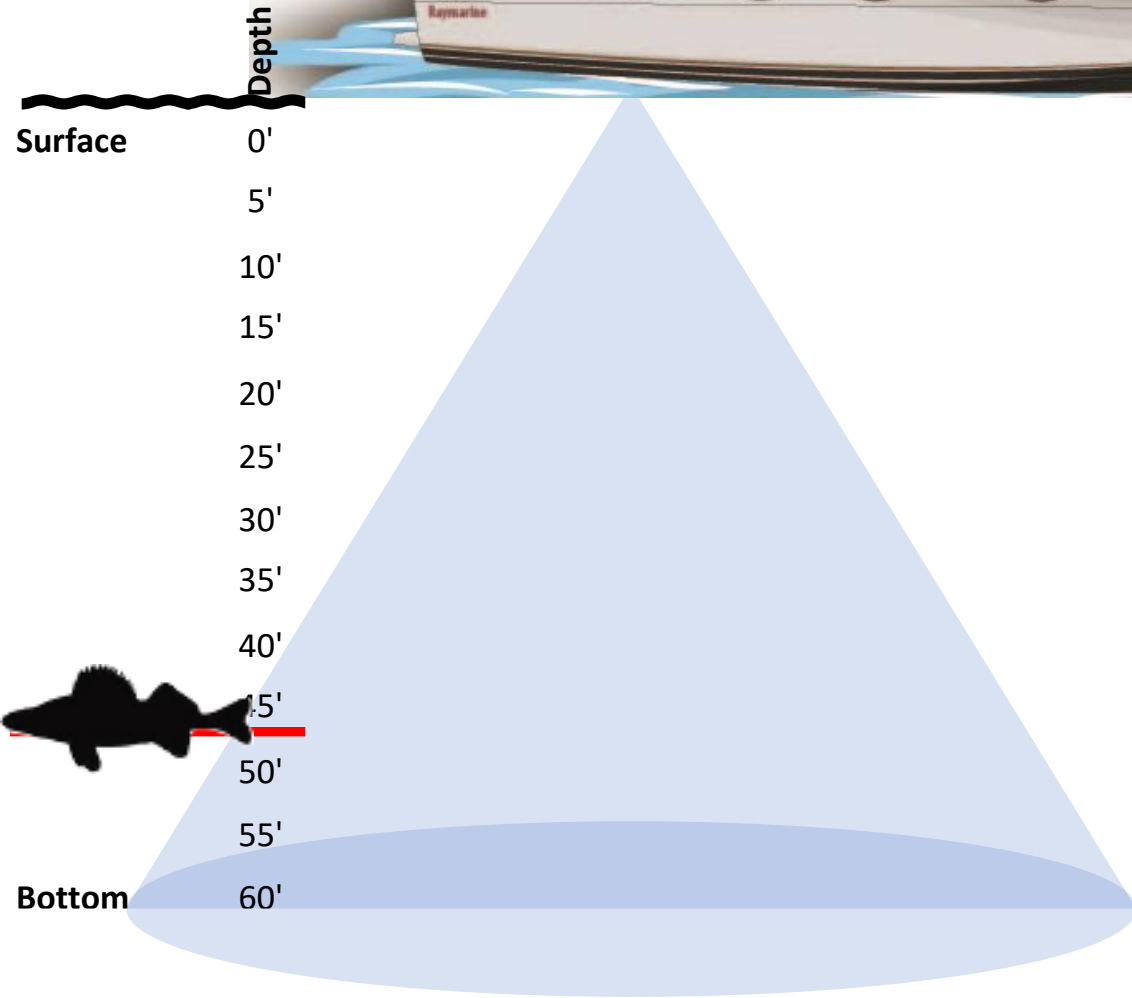


Past

Now

Time

Traditional Sonar Fish Arches

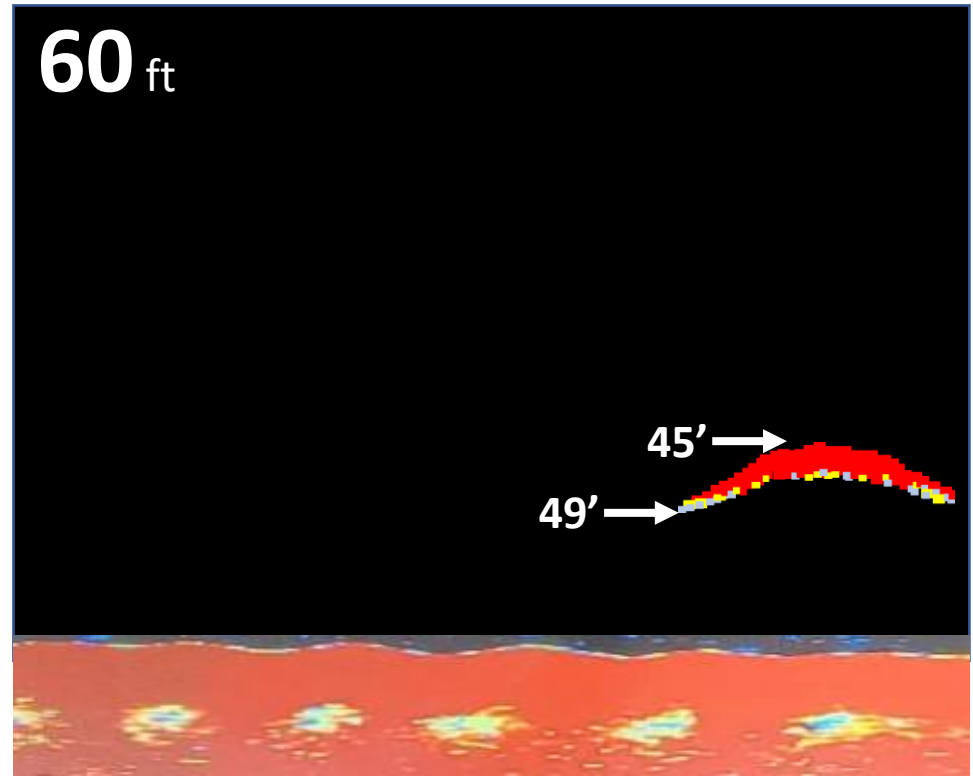


Traditional Sonar Fish Arches

- Top of the fish arch is the DEEPEST the fish can be
 - Fish needs to be directly under the transducer
- Fish size is generally determined by the thickness/intensity of the mark



Depth



Past

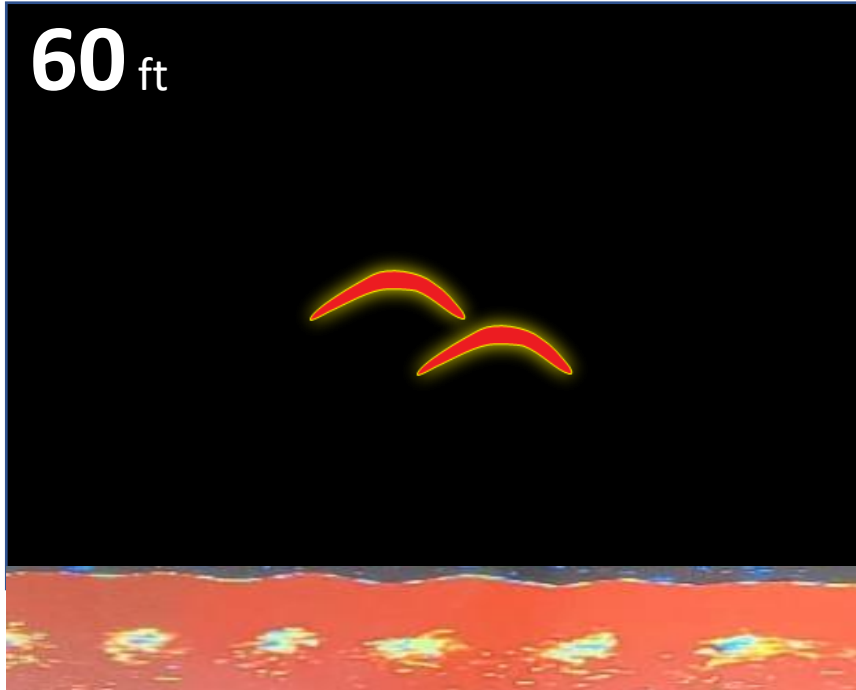
Now

Time

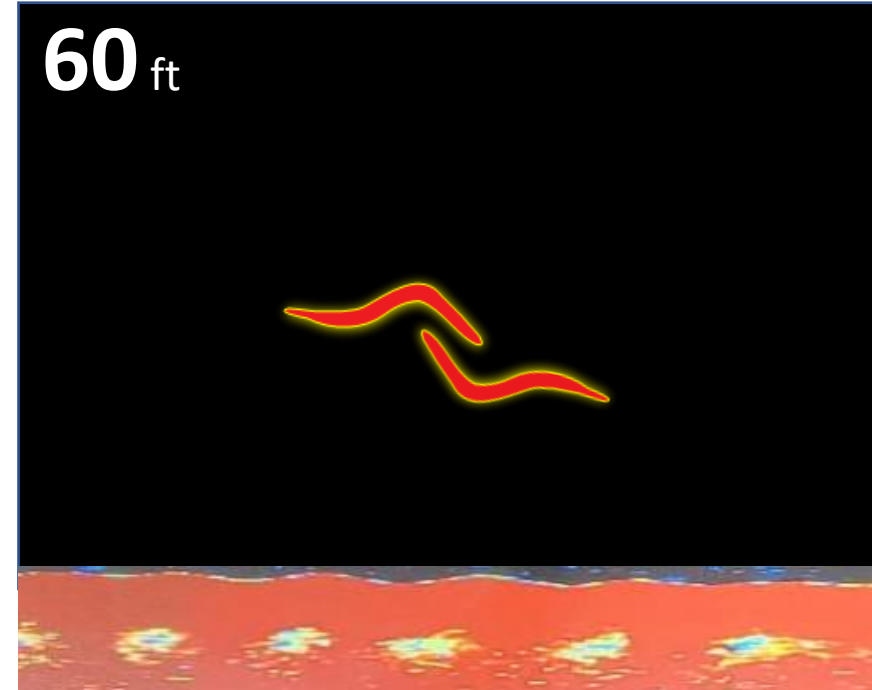


Traditional Sonar Fish Arches

- Inactive Fish

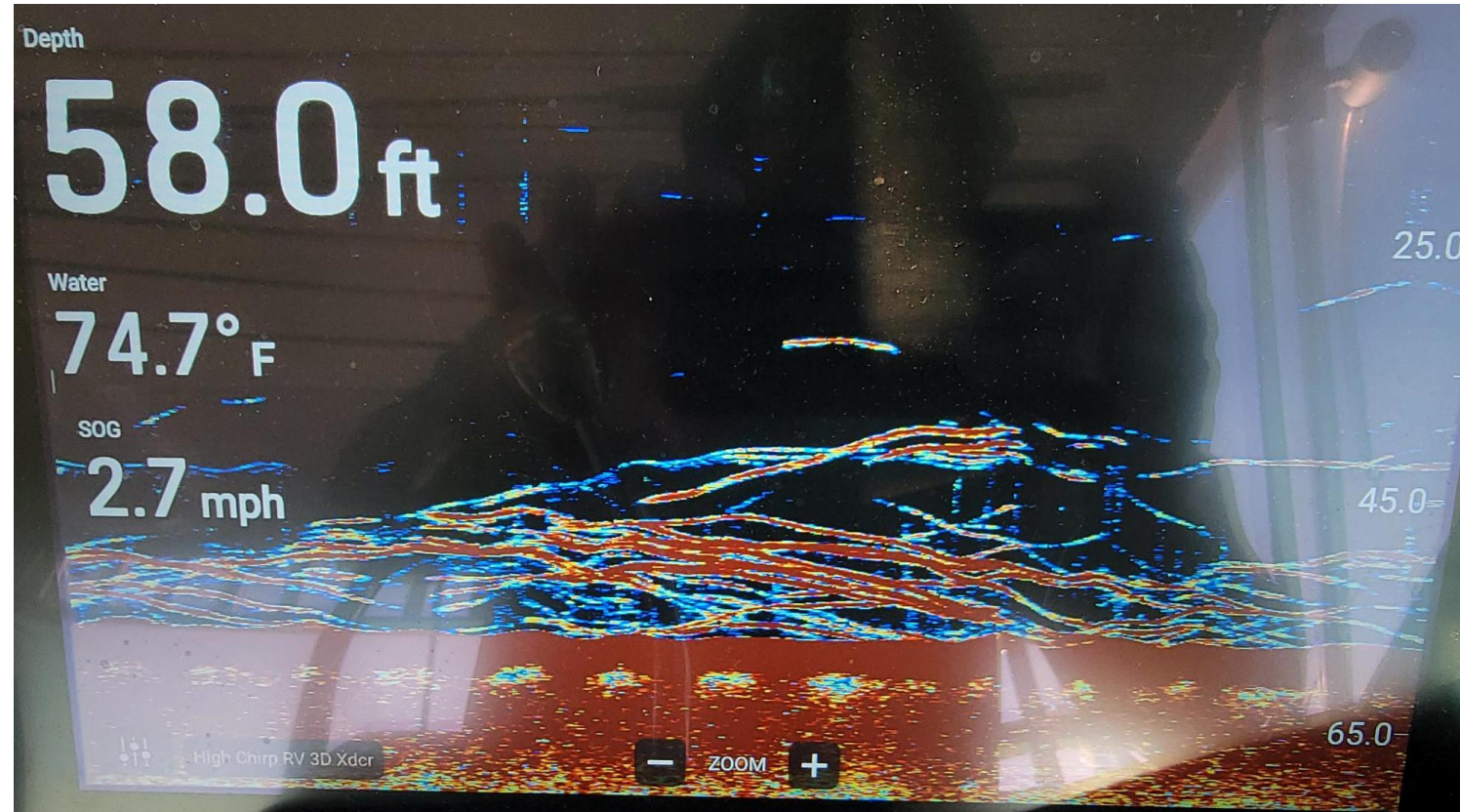


- Active Fish

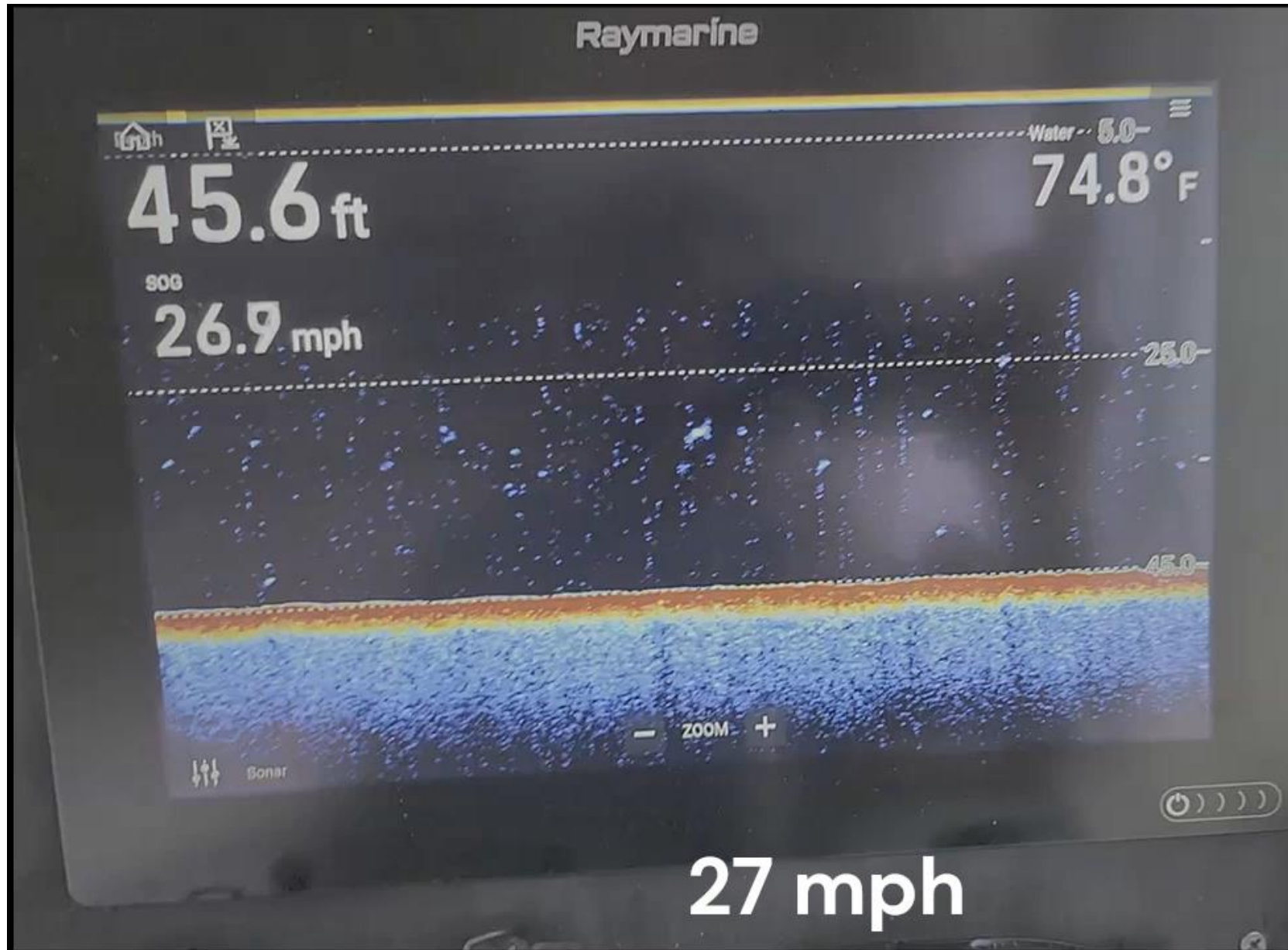


Traditional Sonar Settings

- Default settings on new units are generally pretty good
- Start with
 - Ping Rate (set to max)
 - Higher ping rates = more data
 - Scroll Speed (200% or 2x)
 - Higher refresh rates
 - Gain (auto)
 - You want a solid bottom return
- If you mess up...
find the factory reset!



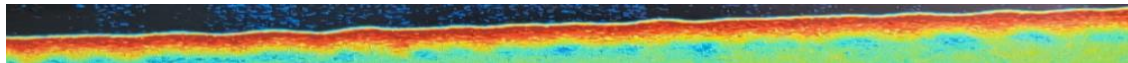
Traditional Sonar Marking Fish at Speed



Traditional Sonar Tips

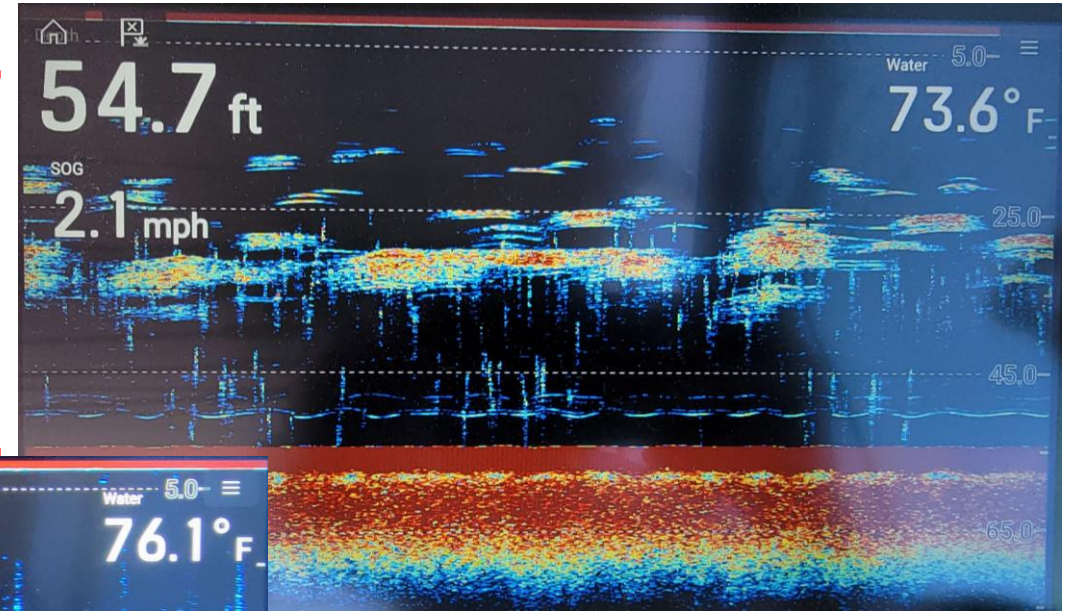
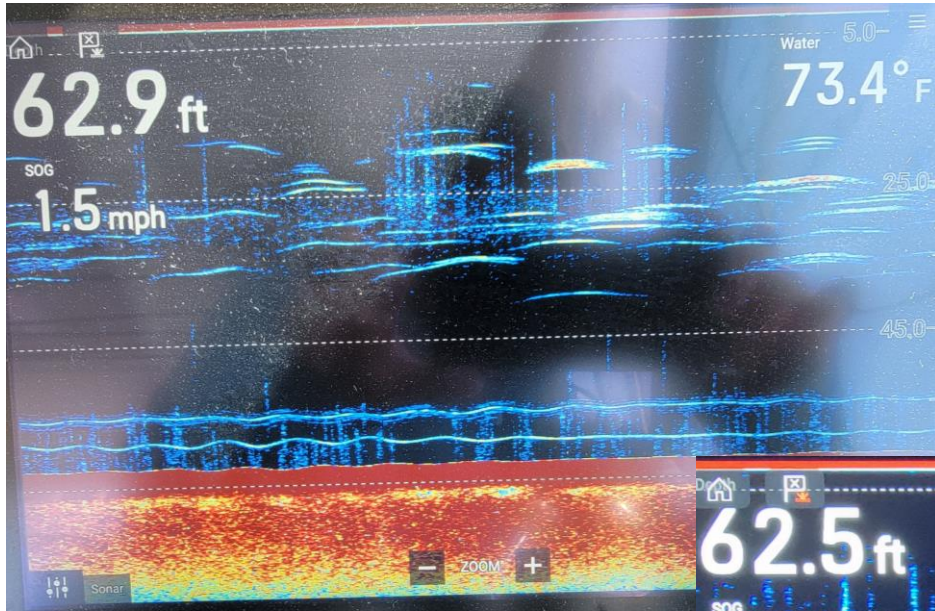
Try not to setup on a dead screen

- Most of the time there's lots of fish in the system
- Spend some time scanning water
- All you need is a solid bottom return

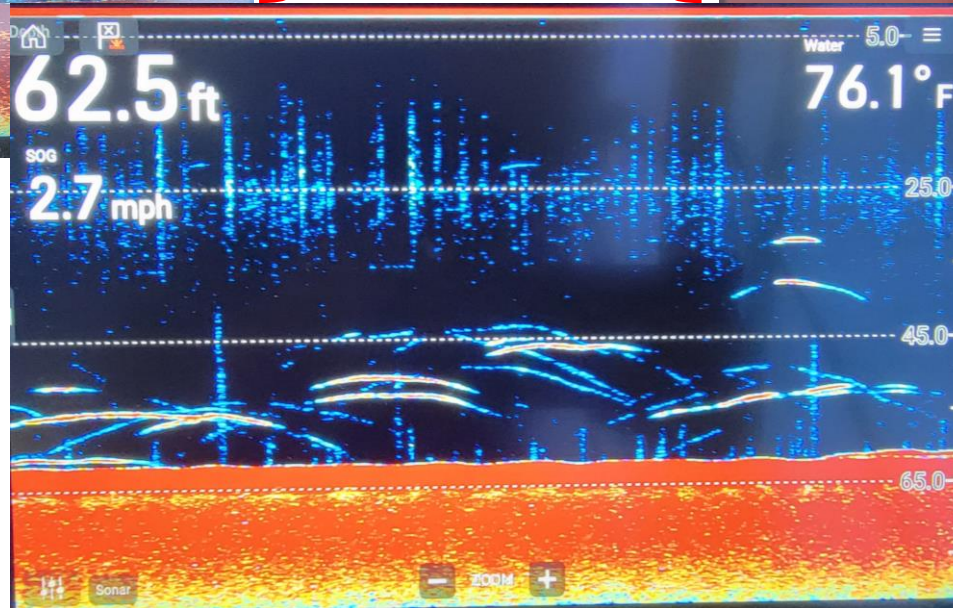


Traditional Sonar Tips

Get familiar with what walleyes look like



NOT Walleyes

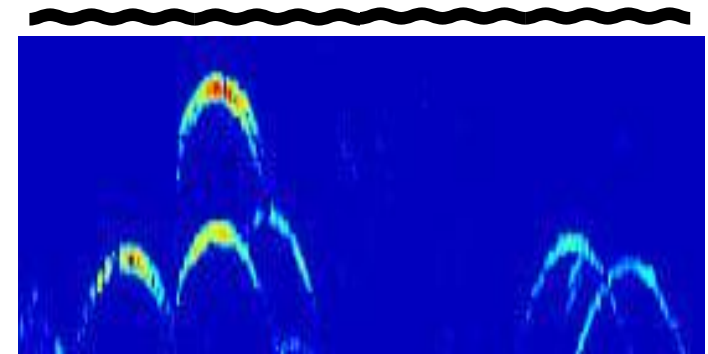
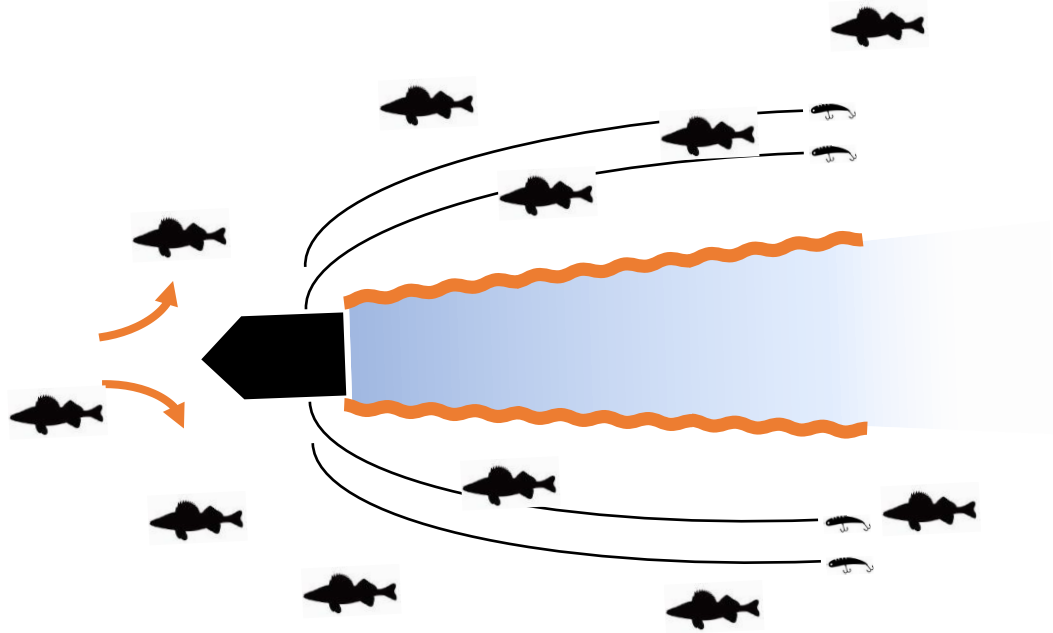


Walleyes!

Traditional Sonar Tips

Ghost Walleye

- The higher walleyes are in the water column, the less you will see



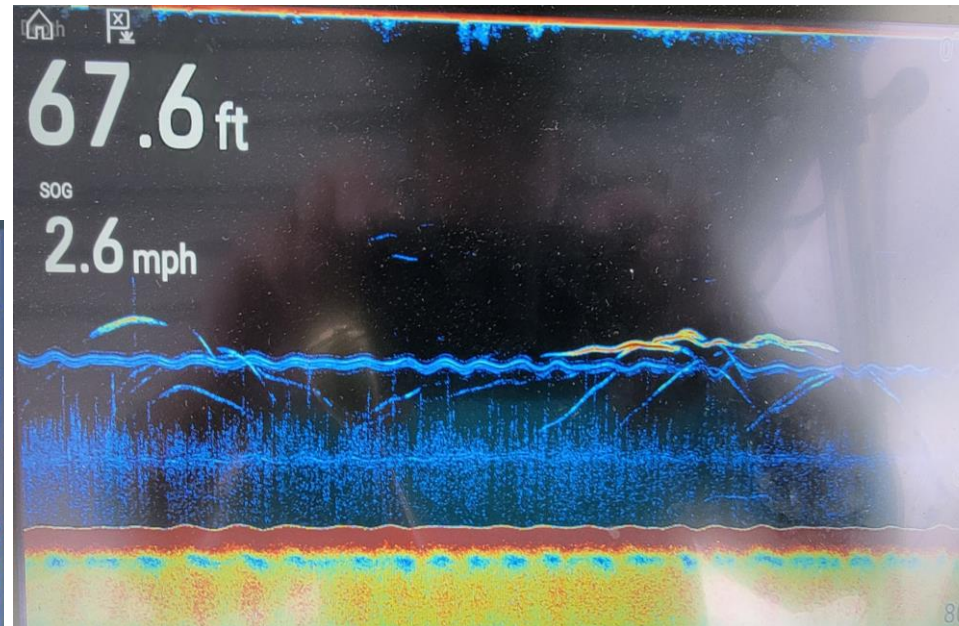
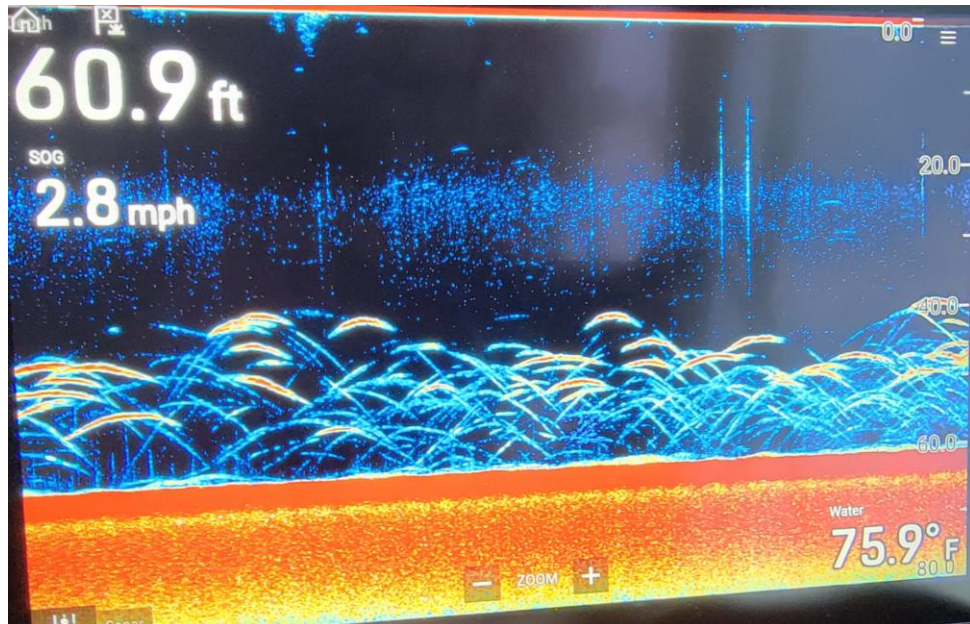
25'

Traditional Sonar Tips

- Pay Attention: Stay in the marks
 - Are marks getting better or drying up?
 - Blank screens for extended periods of time means MOVE!



We first sat up on this...



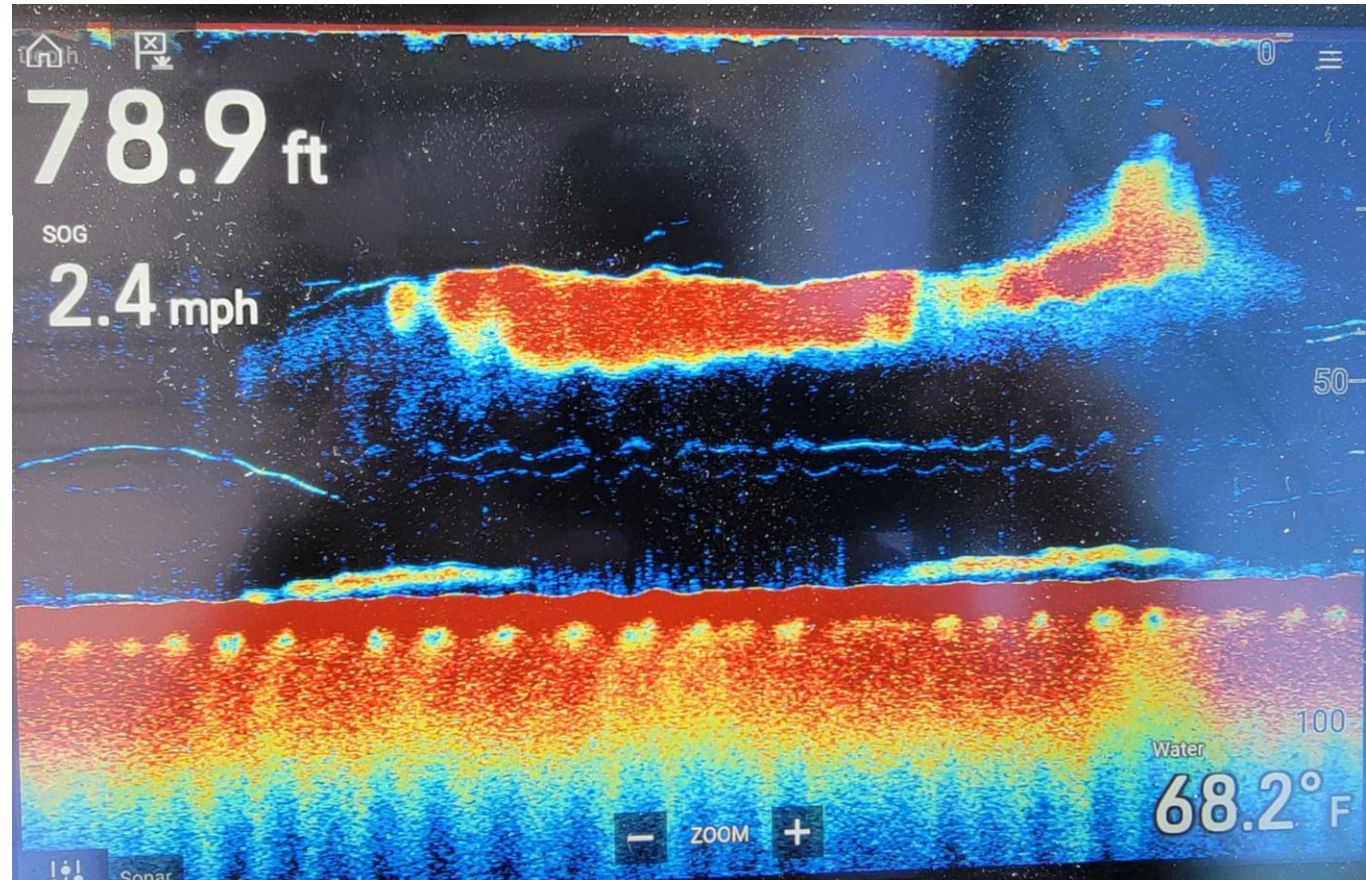
We wondered a bit deeper and now the screen looks like this...

Traditional Sonar Tips

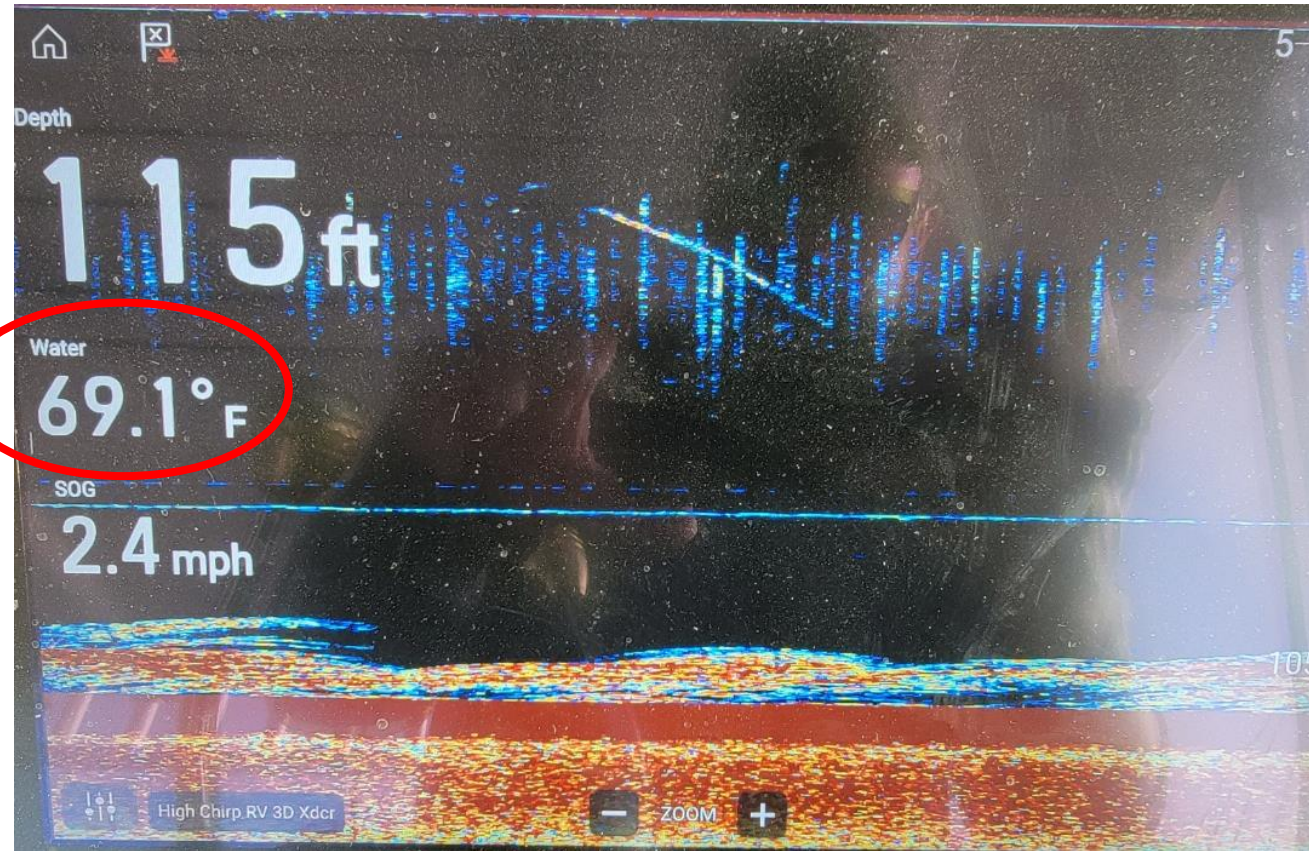
Fish orient themselves to structure

- Bait
 - Gives clues on where to put some lures!

Try putting some lures here!

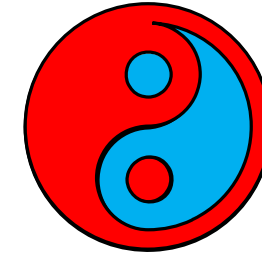


Traditional Sonar Tips

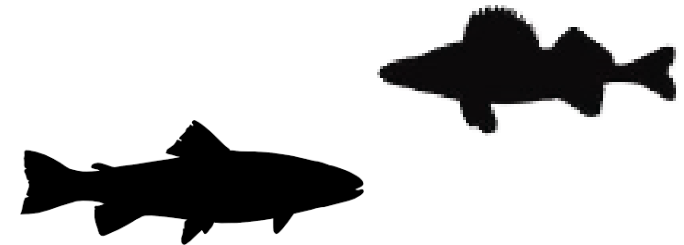


Fish orient themselves to structure

- Surface Temperature
 - Look for/beware of temp changes



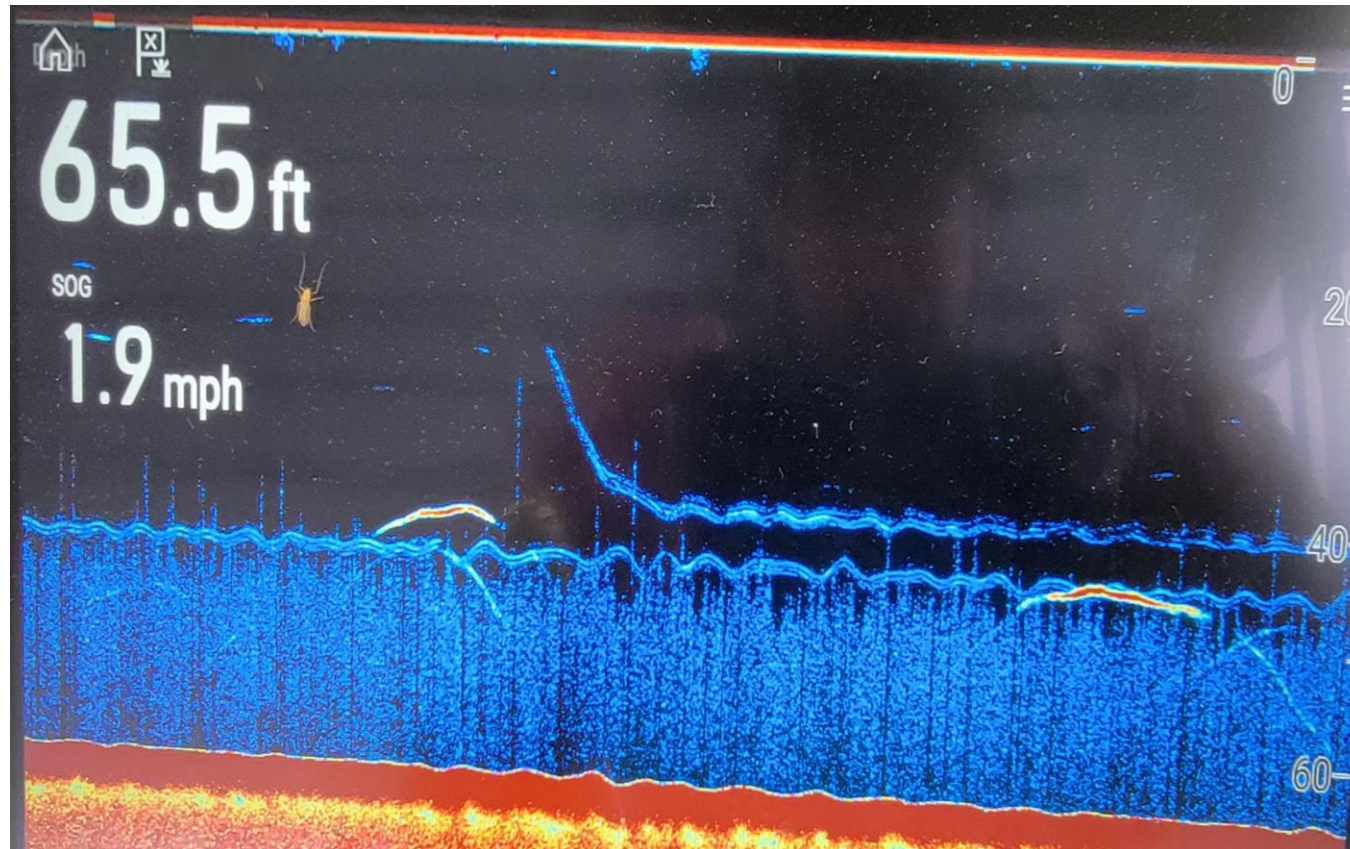
- Temperature breaks may hold
 - Bait
 - Game fish



Traditional Sonar Tips

Fish orient themselves to structure

- Thermoclines under the surface

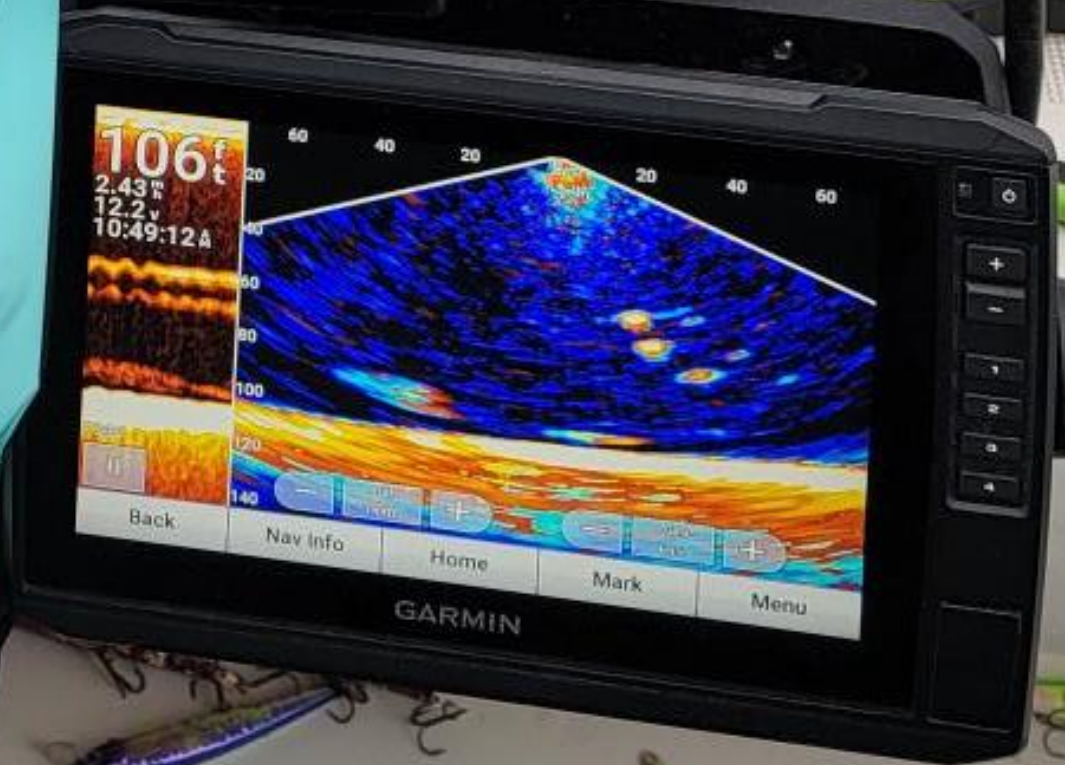


Try putting some lures here!

Too cold!

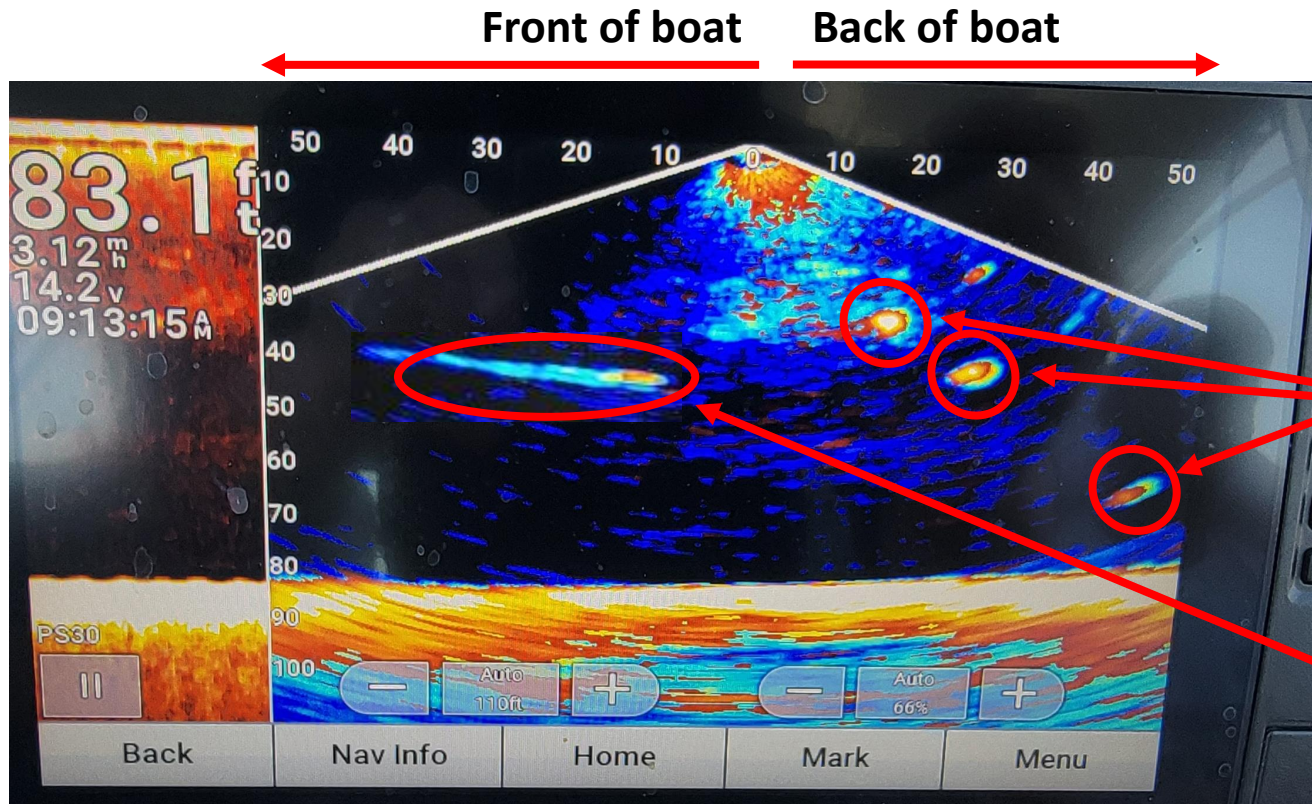


Live Sonar



Live Sonar Our Setup

- PS30 Transducer mounted in the “flipped” orientation
- Garmin EchoMap UHD 9” display

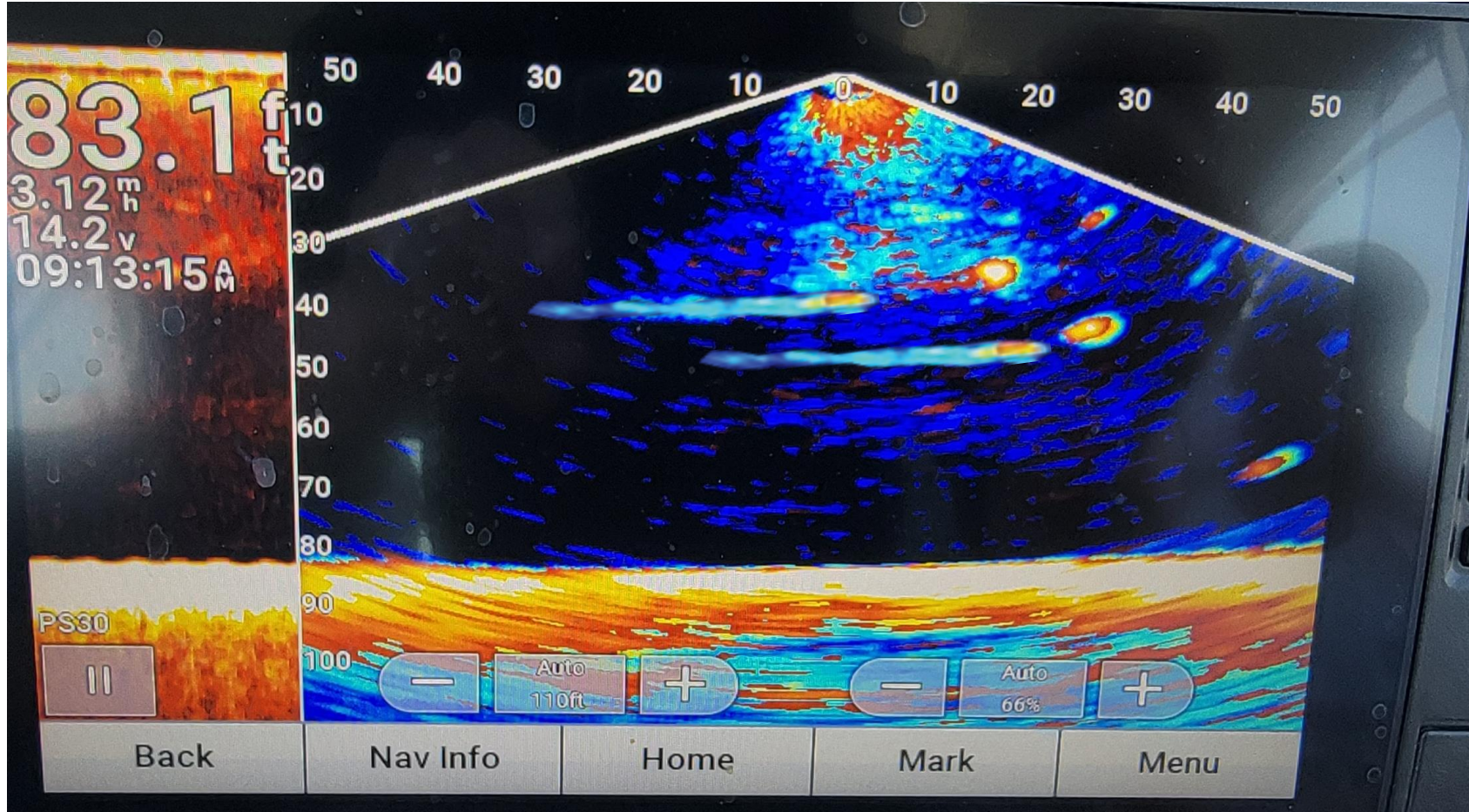


Downriggers

Fish

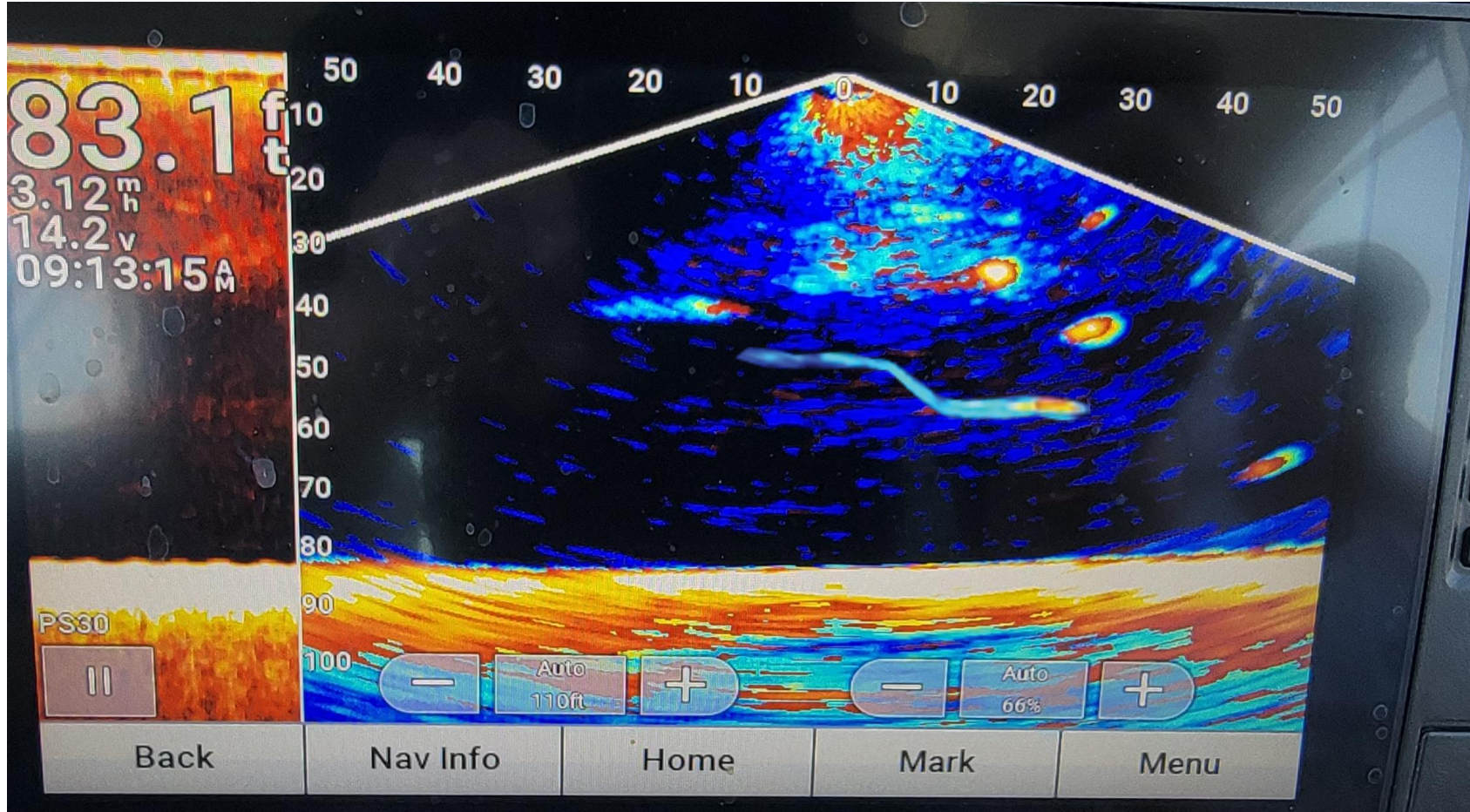
Live Sonar Tips

- Fish Temperament: How fish react to my spread?
 - Aggressive: fish streak right through spread



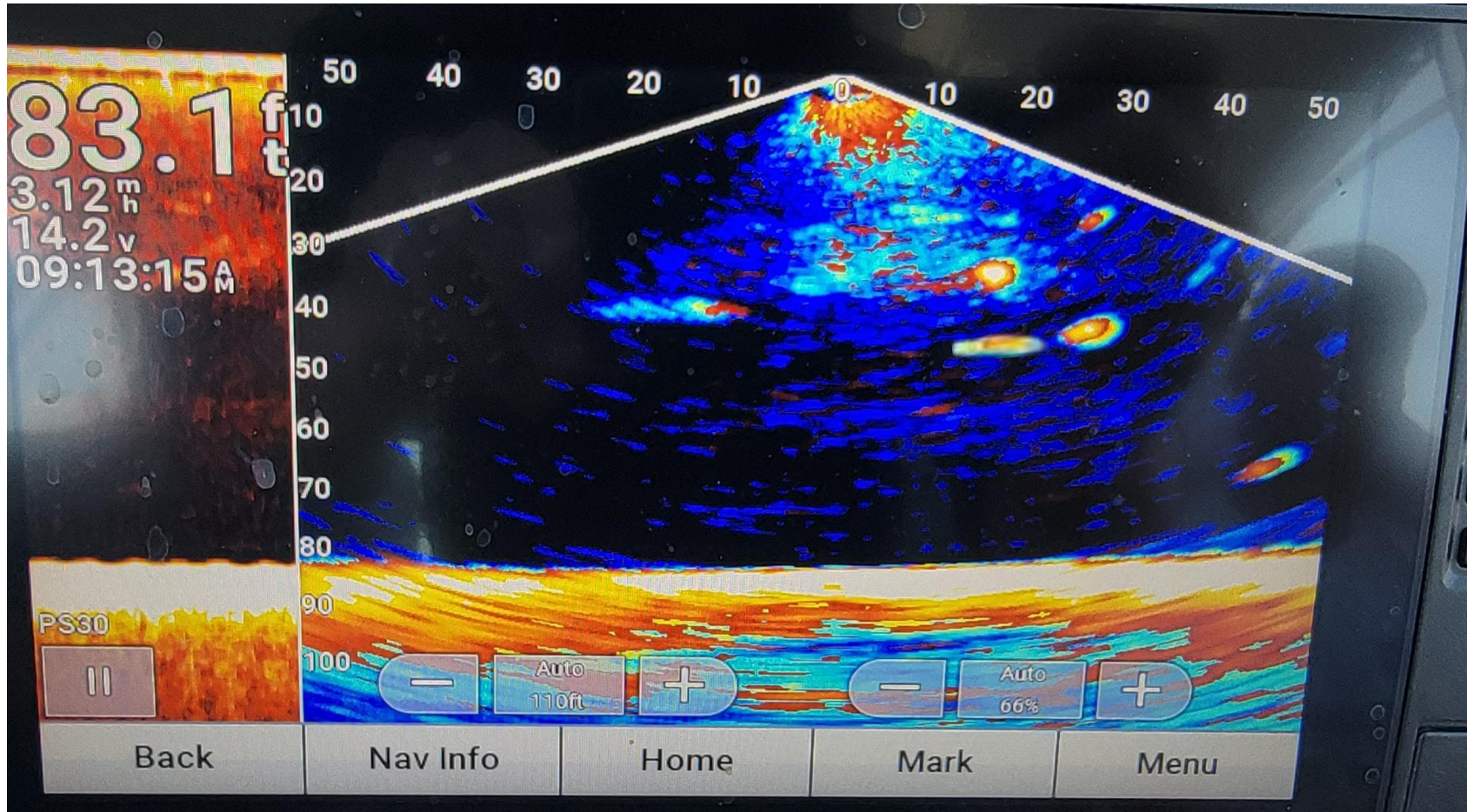
Live Sonar Tips

- Fish Temperament: How fish react to my spread?
 - Scared: fish change course to avoid spread



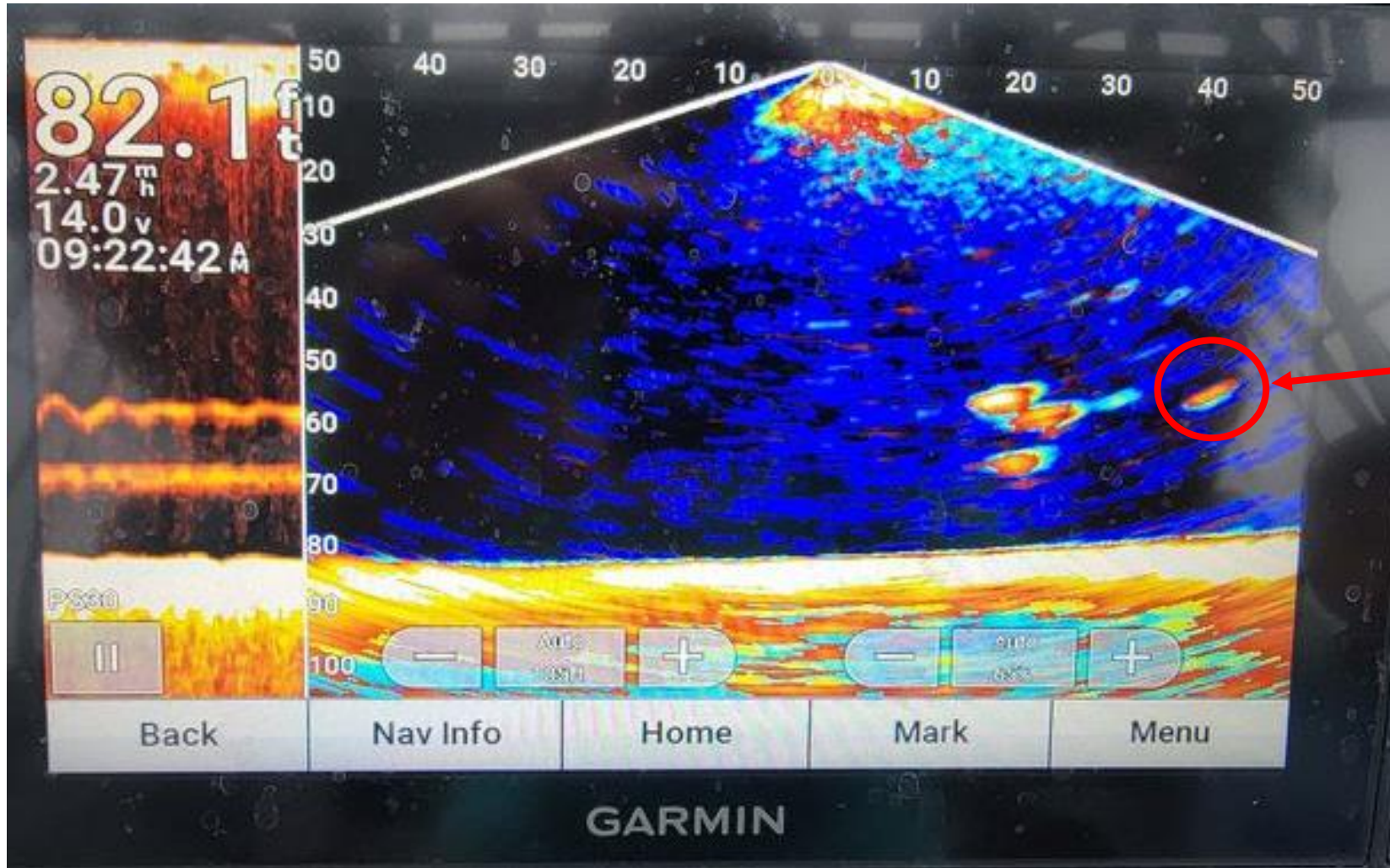
Live Sonar Tips

- Fish Temperament: How fish react to my spread?
 - Curious: fish moves at same speed as boats and looks at baits



Live Sonar Tips

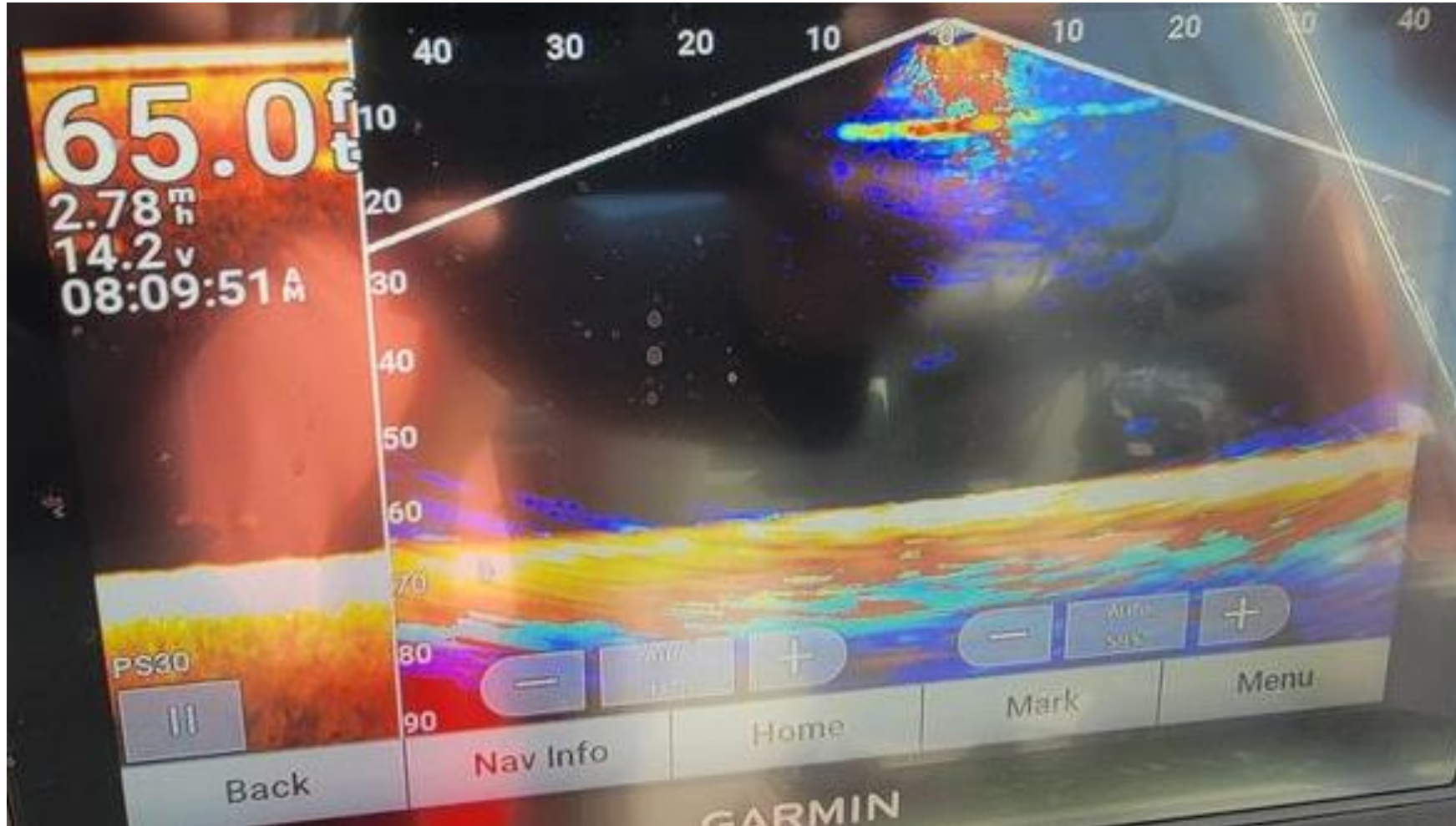
- Identify light bite fish



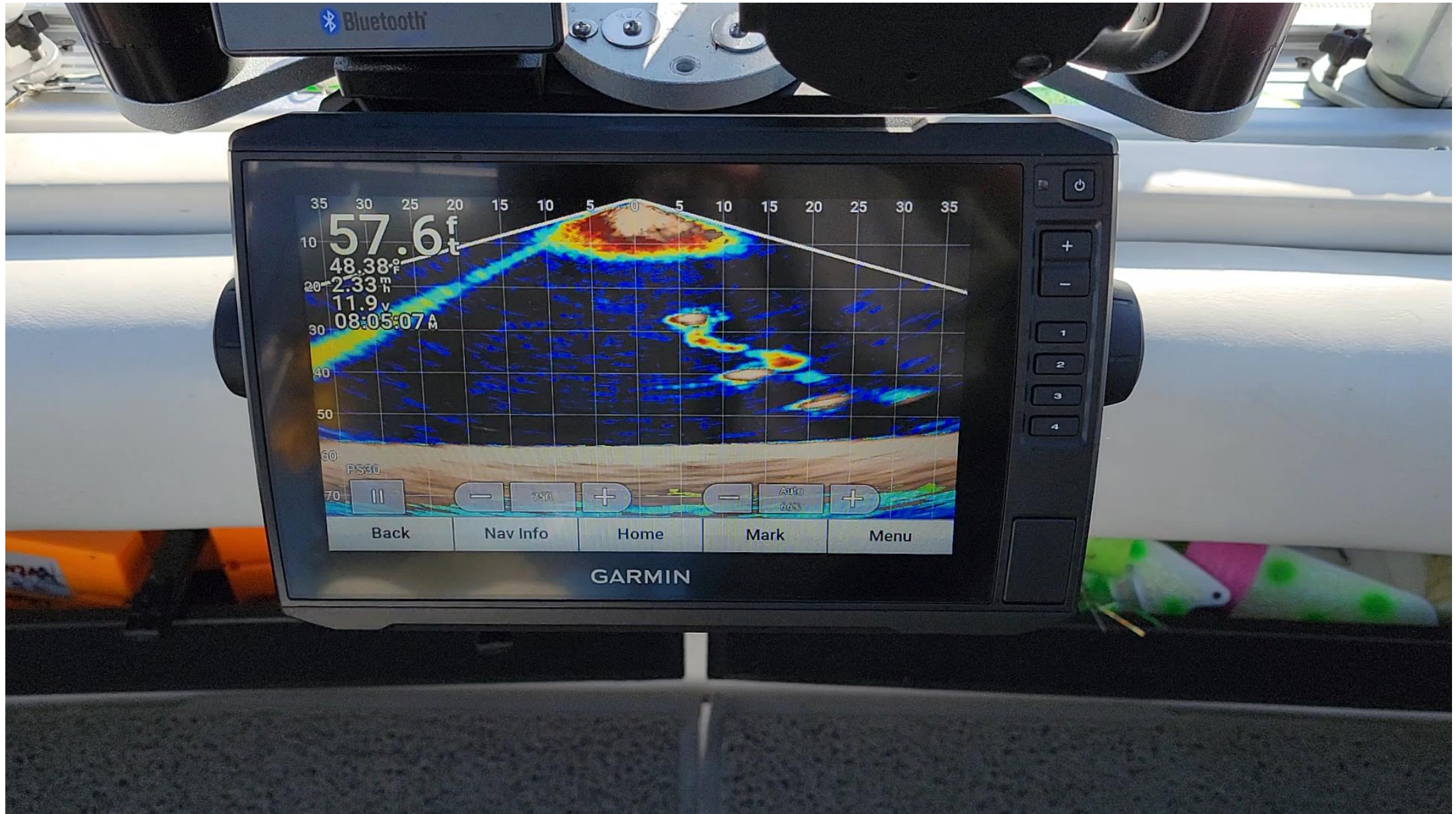
Fish on middle depth rigger

Live Sonar Tips

- Information: High fish



Live Sonar in Action





Temp/Depth/Speed Probes

Temp/Depth/Speed Probes

More Information!

- Conditions below the surface



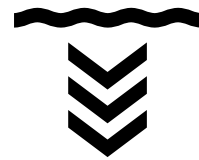
- Speed underneath the surface



- Temperature throughout water column



- Depth of lures



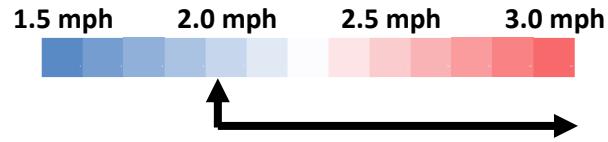
SMART TROLL II

Signal Floor: 12	Depth (ft)	Temp (°F)	Sp
Black Probe			
Level 18	49	68.0	GOOD
Green Probe - Star			
Level 24	71	68.0	GOOD
Red Probe - Port			
Level 24	78	62.5	GOOD



Temp/Depth/Speed Probe Tips

Speed Kills!



- Speed under the water is likely different than surface speed or speed over ground
- Don't be afraid to go fast, especially when the water warms up!



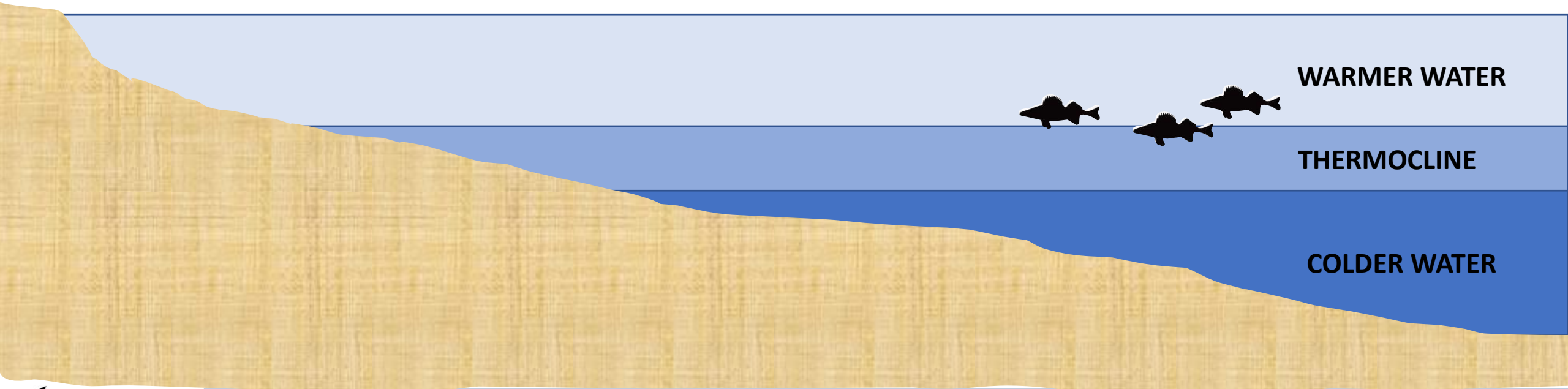
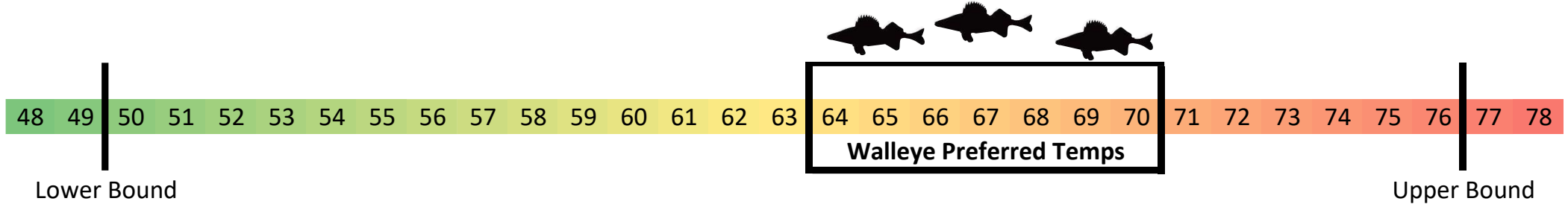
3.5 MPH!



Temp/Depth/Speed Probes

Fish orient themselves to structure

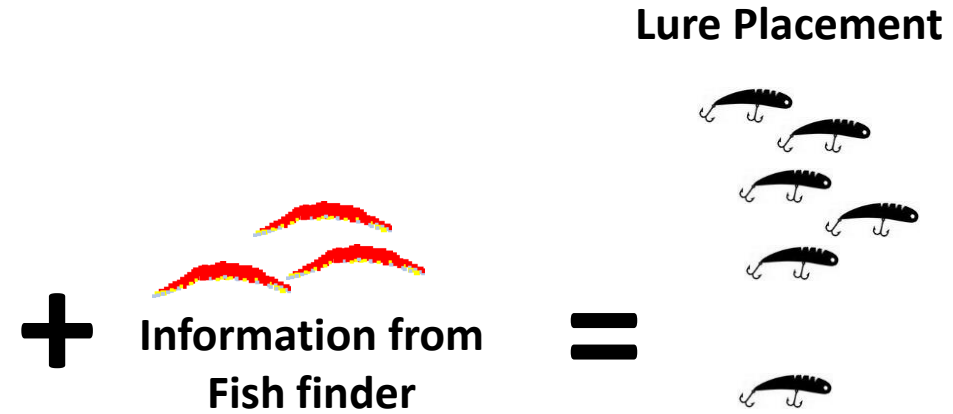
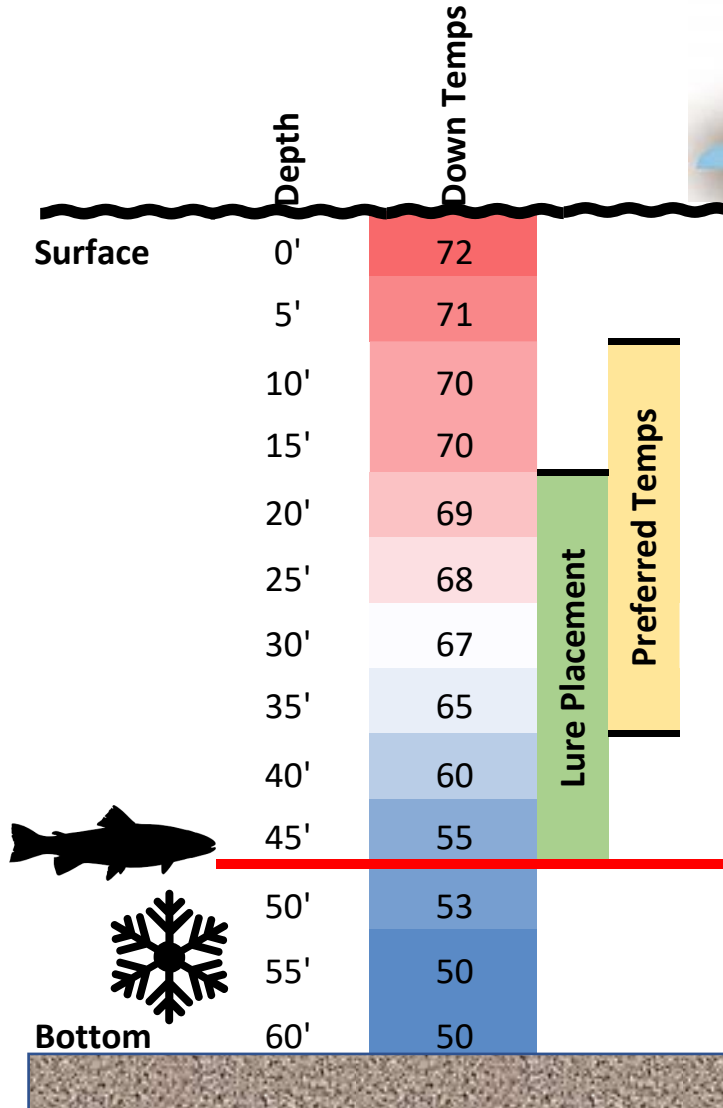
- Temperature provides structure in Lake Erie
- Walleyes tend to suspend right above the thermocline



Temp/Depth/Speed Probe Tips



- Build your underwater spread, place lures above the cold water (55 degrees)
- Use fish finder information and spread out your lures to key in on the bite



Temp/Depth/Speed Probe Tips



- Spread lures out to maximize coverage and dial in the bite
- Without probes you do not know exactly where your lures are!
 - Consistent setups for each deployment method are key
 - Same Rod
 - Same Reel
 - Same Line
 - Reels spooled full

9:58 [status icons] Smart Troll II DISCO

Signal Floor: 12	Depth (ft)	Temp (°F)
Blue Probe Level 20 Batt -	65	68.0
Green Probe Level 18 Batt -	78	68.0
Yellow Probe Level 14 Batt -	60	
Red Probe Level 16 Batt -	70	



Questions?



<https://www.facebook.com/nemetsportfishing/>

NemesisSportFishing@gmail.com

Also check out our on the water fishing reports on Facebook!

www.FishNemesis.com

