

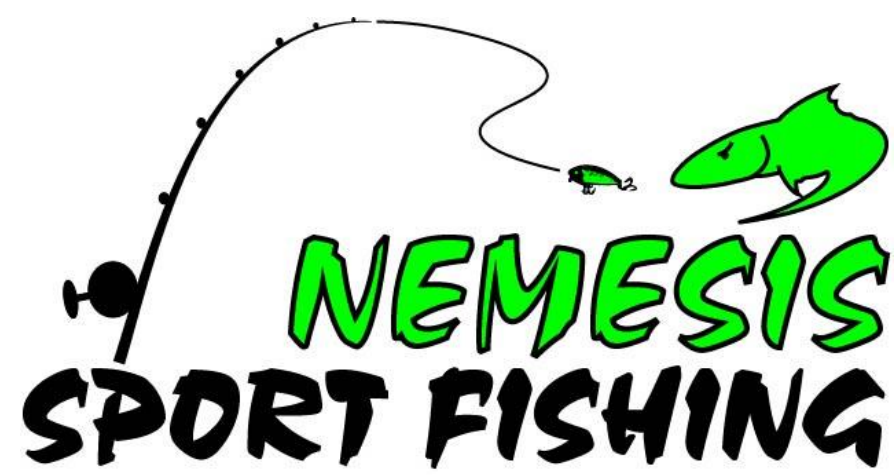


Photo credit: Dan Graziano

Chasing the Bite: Lake Erie Seasonal Strategies for Trolling Walleye Success



| Nemesis Sport Fishing



Home Ports: Erie, PA & Wilson, NY
Boats: 3100 Tiara Open LE
2700 Tiara Pursuit
252 Sport Craft

Captain Joe Nemet



www.FishNemesis.com



Tournaments Lake Erie & Lake Ontario

2023

- Spring King of the Lake Day 1 3rd, 7th overall
- Wilson Harbor Invitational 1st overall, 1st A-Tom-Mik Challenge
- Summer Slam Day 2 4th, 6th Overall
- Offshore Challenge Day 1 1st
- Fall Trout Challenge 1st



<https://www.facebook.com/nemetsportfishing/>

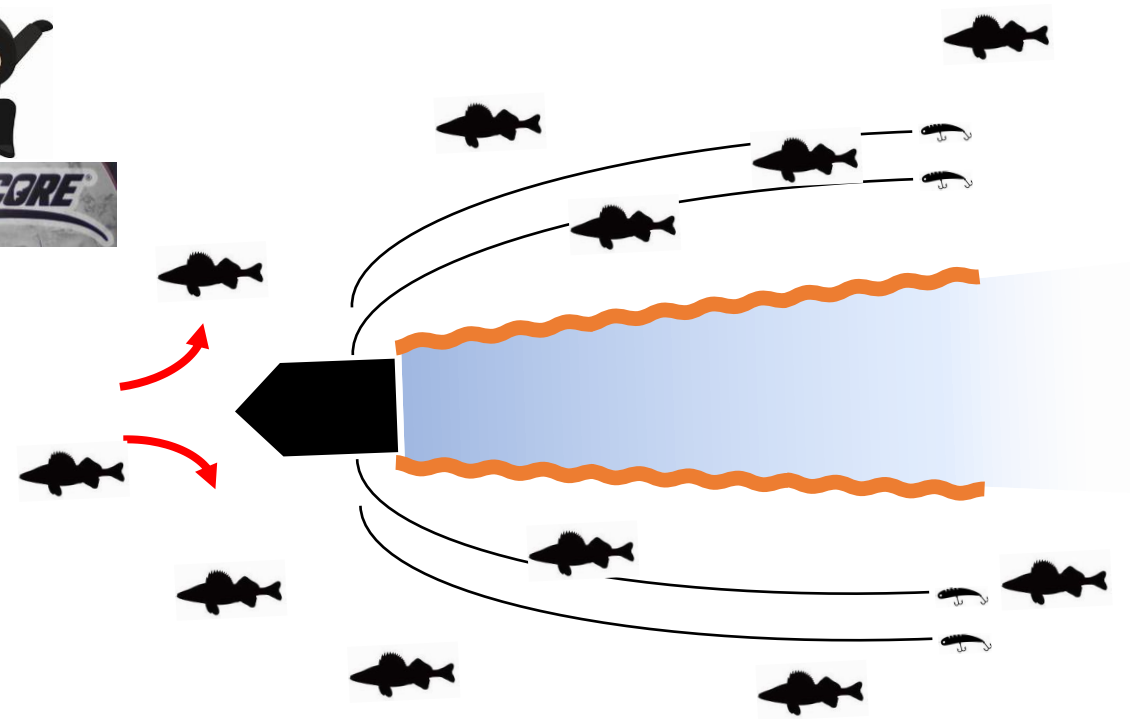
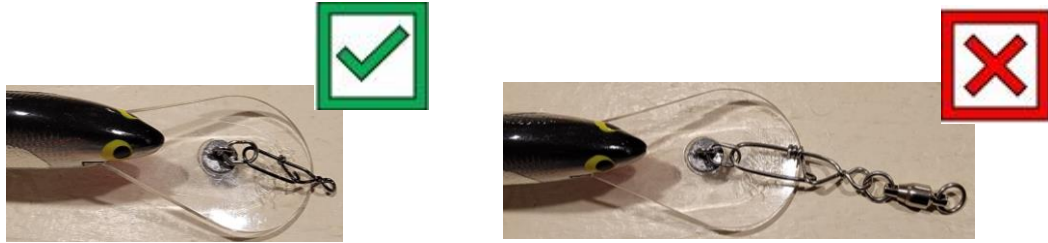


Know your Prey: Walleye

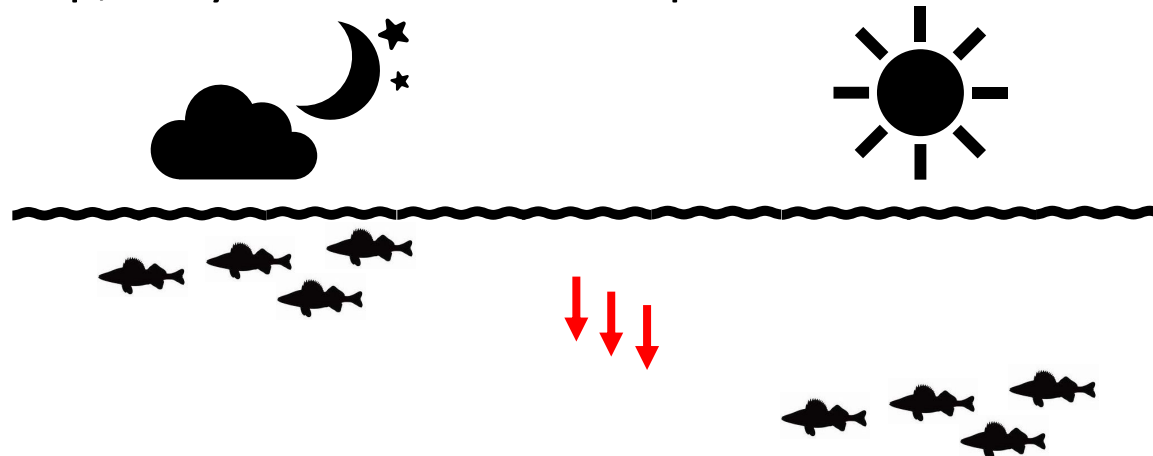


Know your Prey: Walleye

- Walleyes are easily spooked
 - Stealth tactics are a must

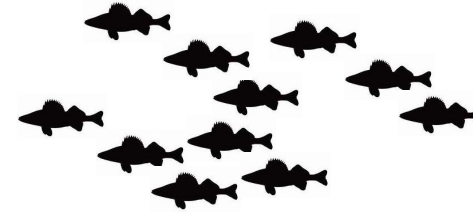


- They are sensitive to light
 - In low light conditions (morning & evening) they are usually higher in the water column
 - When the sun comes up, they tend to move deeper in the water column

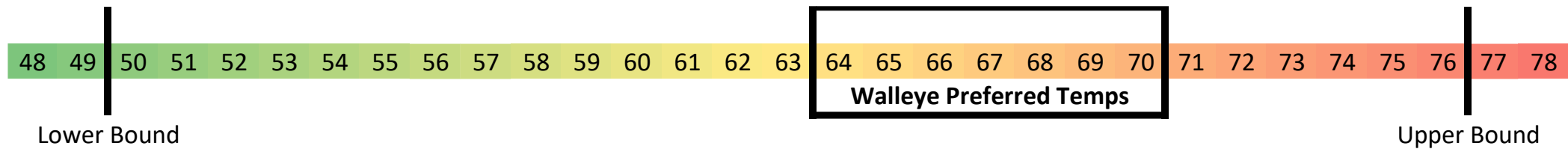


Know your Prey: Walleye

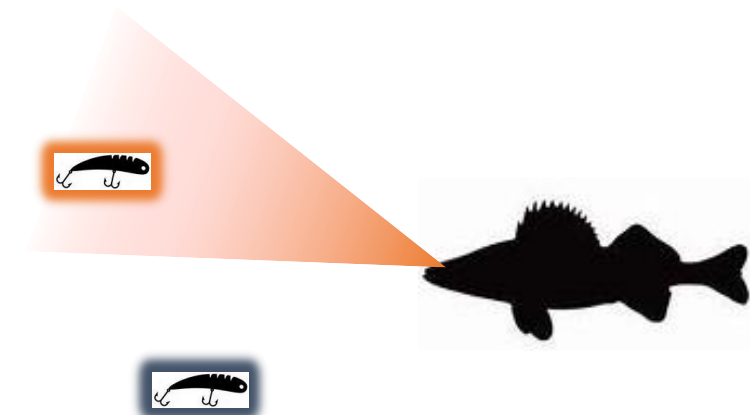
- They school
 - Where there is one, there are more
 - Can you replicate your success?



- Optimal temperatures http://www.fishing.info/water_temp.html

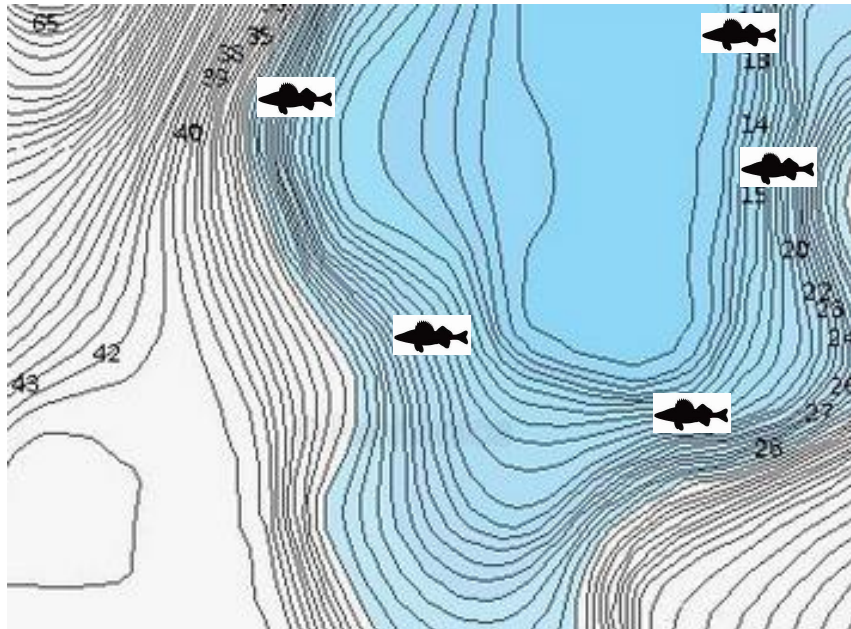
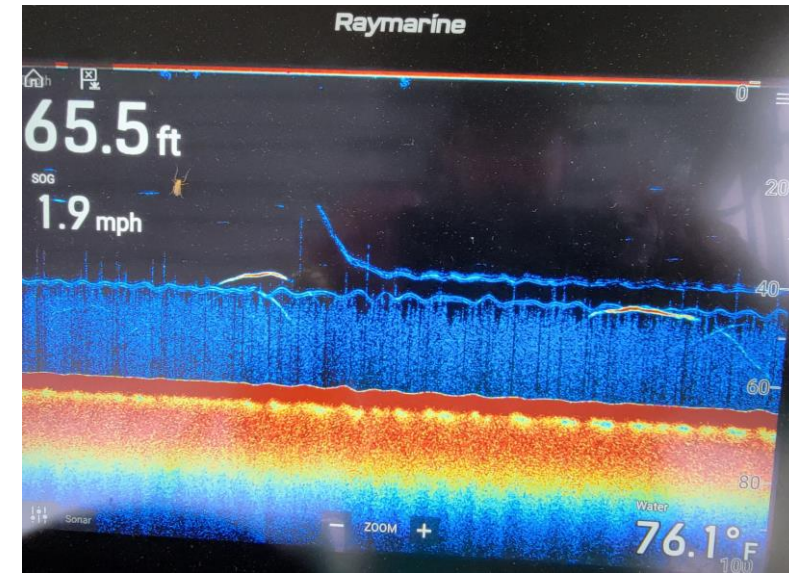
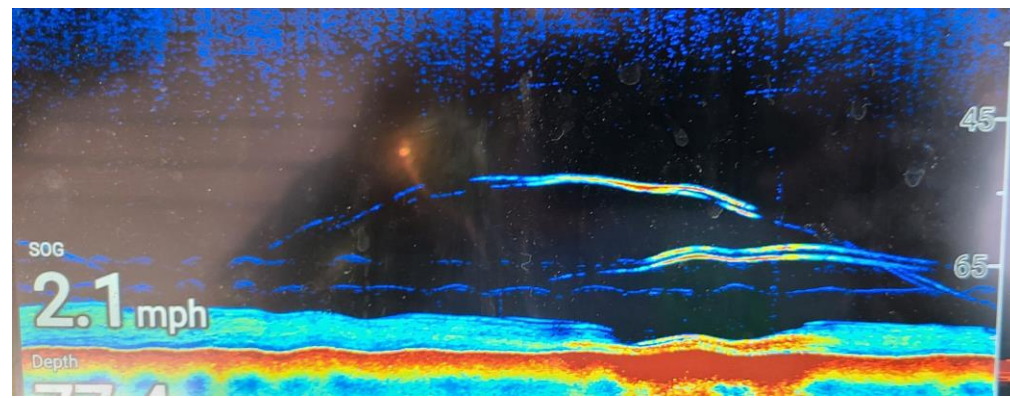


- As waters warm during the summer, walleyes move to deeper water
- Walleyes feed up, so don't fish below them!



Know your Prey: Walleye

- Walleyes like structure
 - Bait
 - Thermoclines
 - Pay attention to bottom contours



← Could be good areas to try!

This is the way



Nemesis Fishing: Frame of Reference

- Presentation Techniques



Planers



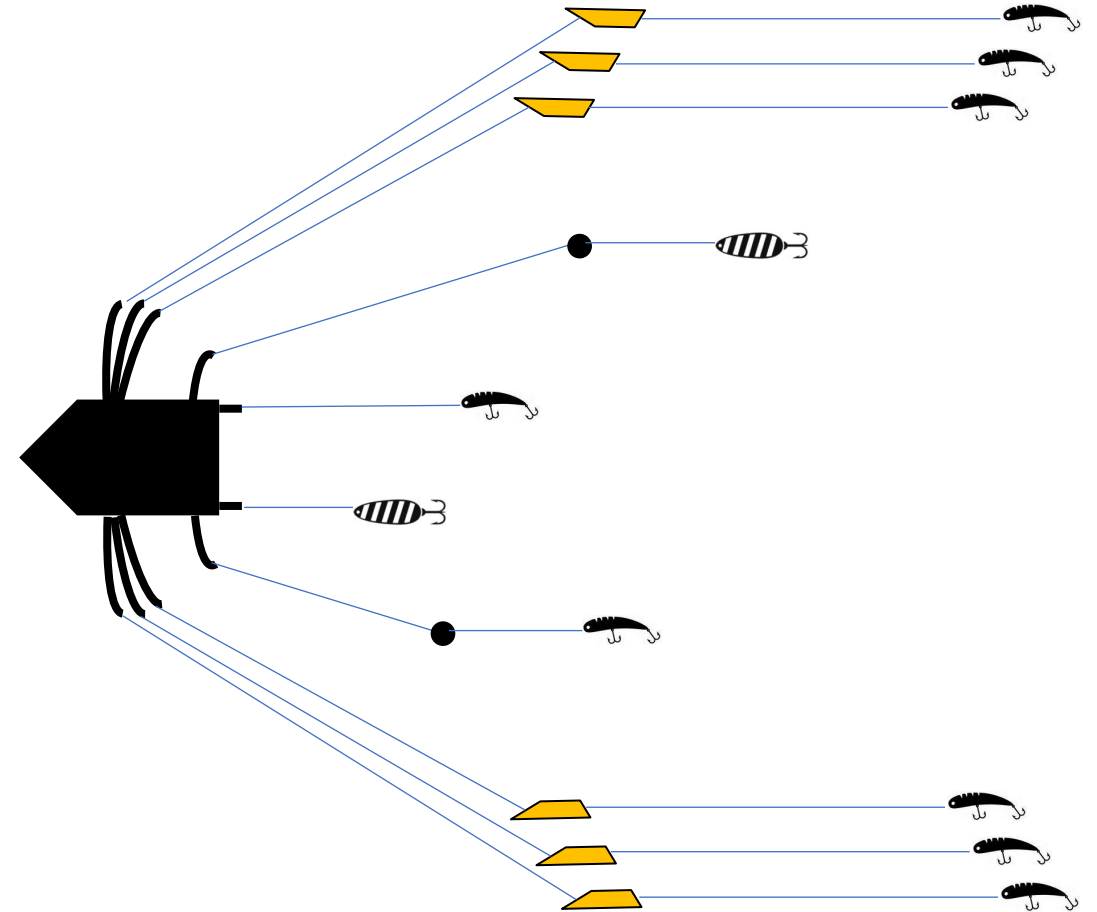
Divers



Riggers

- Rod setups

- Mono/braid
- Stealthcore

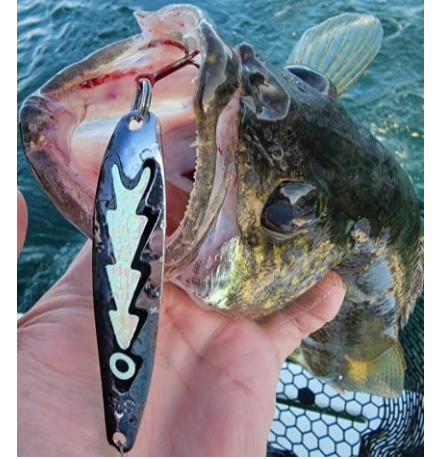


Nemesis Fishing: Frame of Reference

- Lures

- Shallow diving

- Renoskys, Bombers, Yozuri



- Medium diving

- Bagleys, Bayrat short deeps, Bomber 24As



- Deep diving

- Bayrat LXDs, Reef Runner 800s, Bandits



- Spoons

- DW superslims & DWs
 - Michigan Stinger standard & scorpions

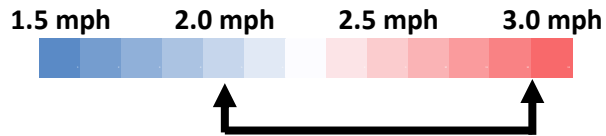


Nemesis Fishing: Frame of Reference

- Speed refinement



- Bags in/out
- Our “kill” speed usually between 2.2 and 3.0 mph



Bag out →

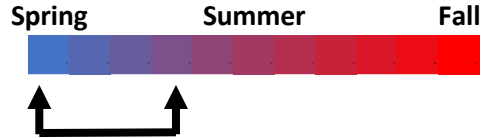
Spring Walleyes



Spring Walleyes: Where to Go



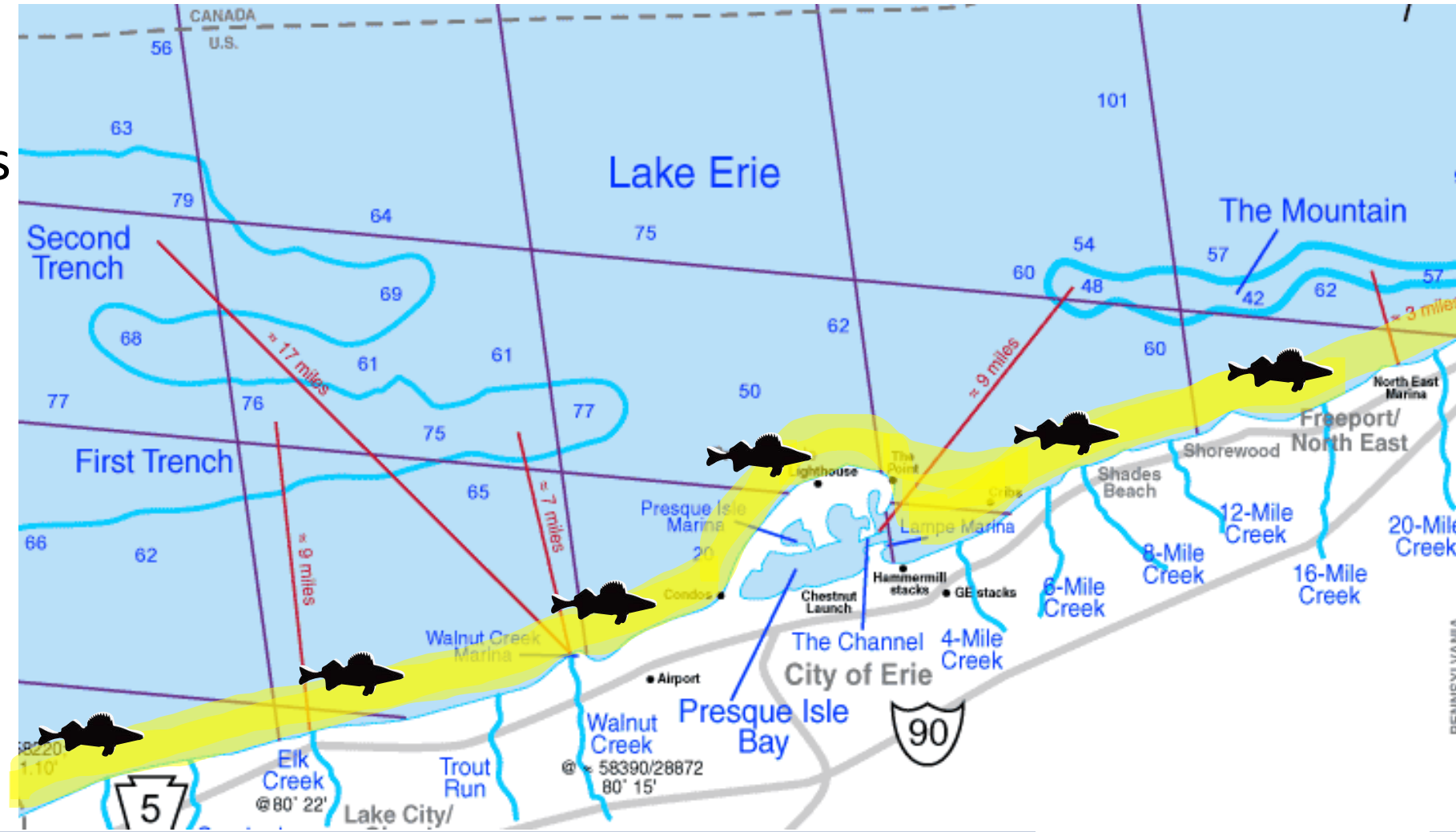
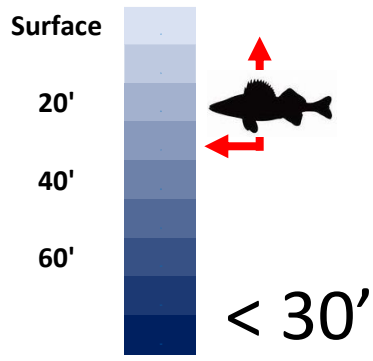
Time: Late May through June



Water Temps:
mid 50s to low 60s



Nearshore,
less than 50 fow

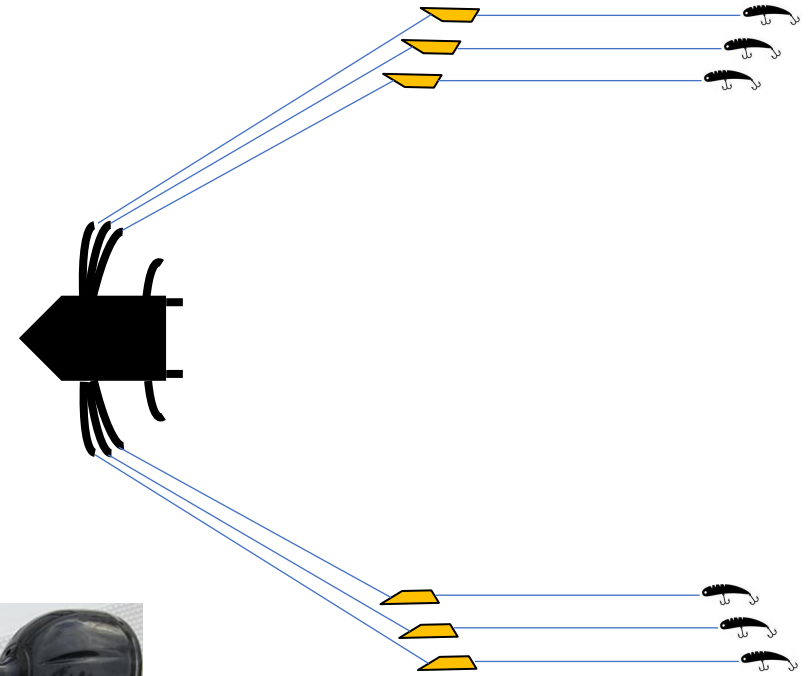
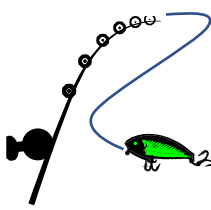


Spring Walleyes: Techniques

- Walleyes typically in the top 25' of the water column
- Planer boards are a must!
 - Mono rods with medium to deep diving lures
 - 75' to 200' back



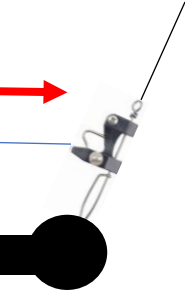
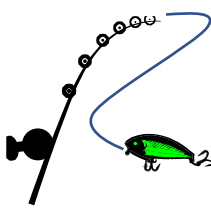
- Short cores (1, 3, 5 cores)
 - With shallow to medium diving lures
 - small spoons



Spring Walleyes: Techniques

- Diver and riggers are usually not very effective

- Riggers: use long leads



- Divers

- Mono rods with slide divers or DW divers (82mm size 3, 107mm size 4) on high settings



- Tip: make these as stealthy as possible

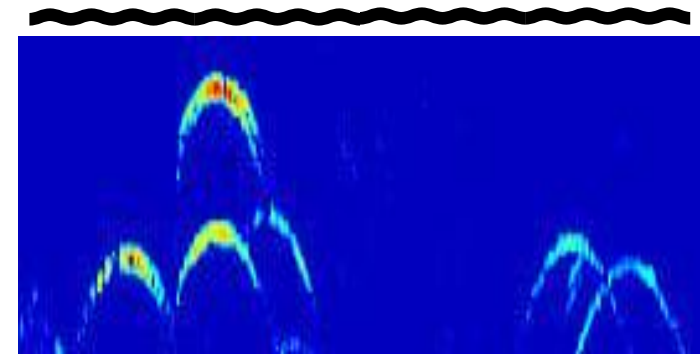
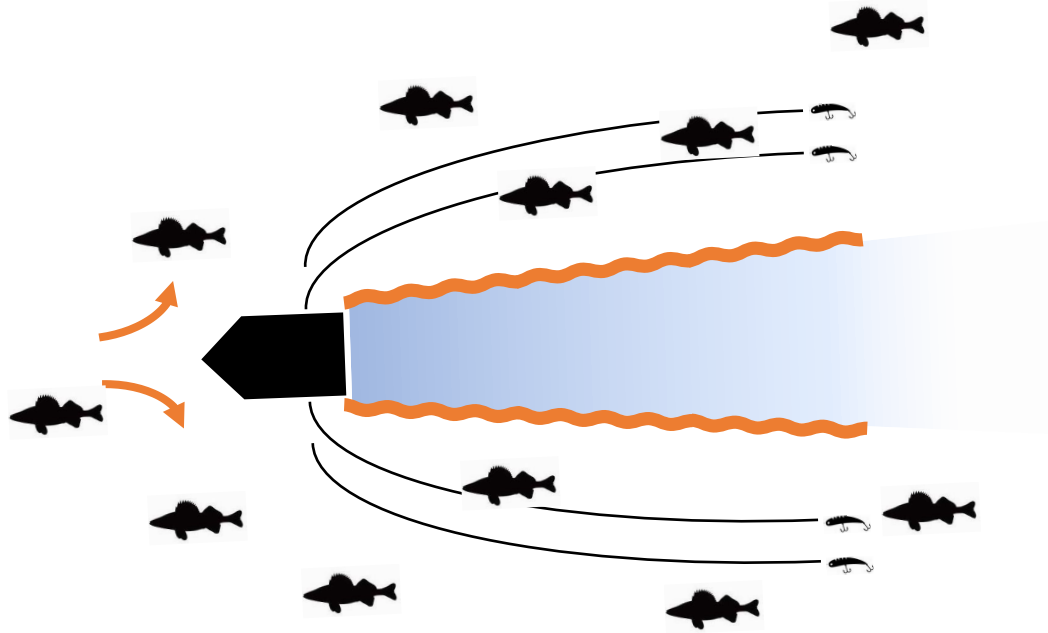
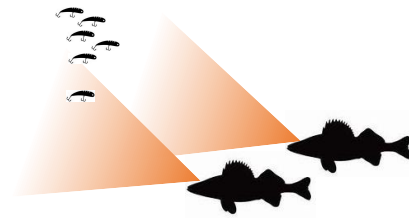
- Fluorocarbon leaders
- Small non-shiny snaps
- Black weights and divers



Spring Walleyes: Tactics & Tips

- Ghost Walleye

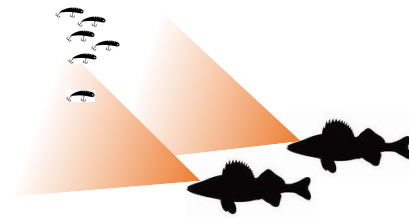
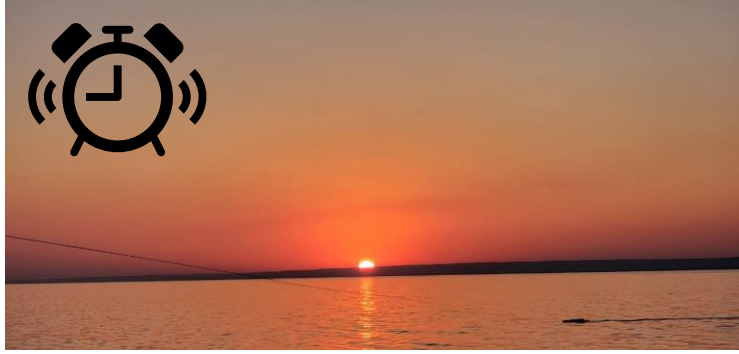
- The higher walleyes are in the water column, the less you will see



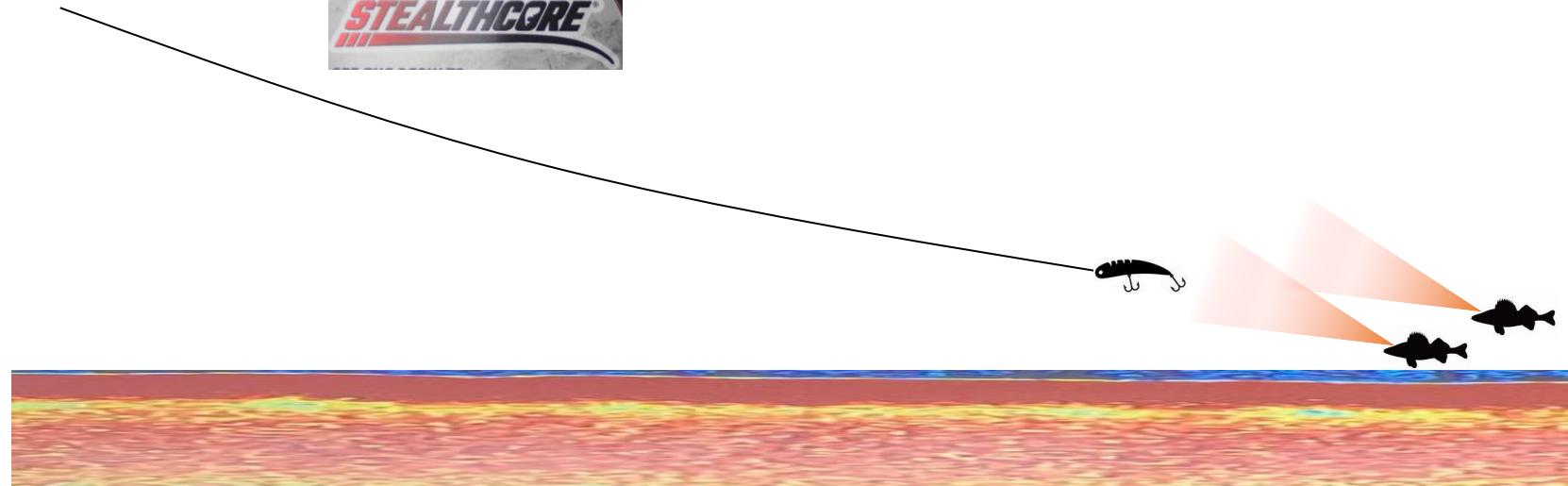
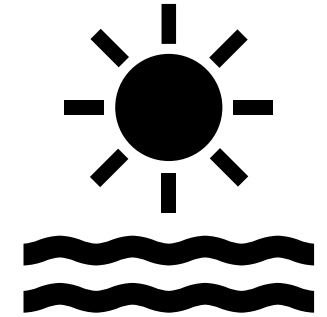
↑
25'

Spring Walleyes: Tactics & Tips

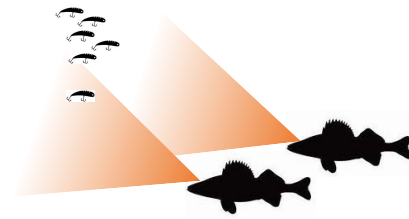
- “The early bird gets the worm”



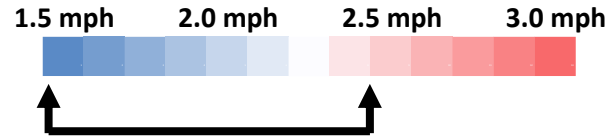
- As the sun rises, fish tend to get spooky in shallow water
 - Stealthy techniques
 - Natural colors
 - Fish close to the bottom



Spring Walleyes: Tactics & Tips



- Trolling speed 1.5 to 2.5 mph
 - Troll slower if water is colder

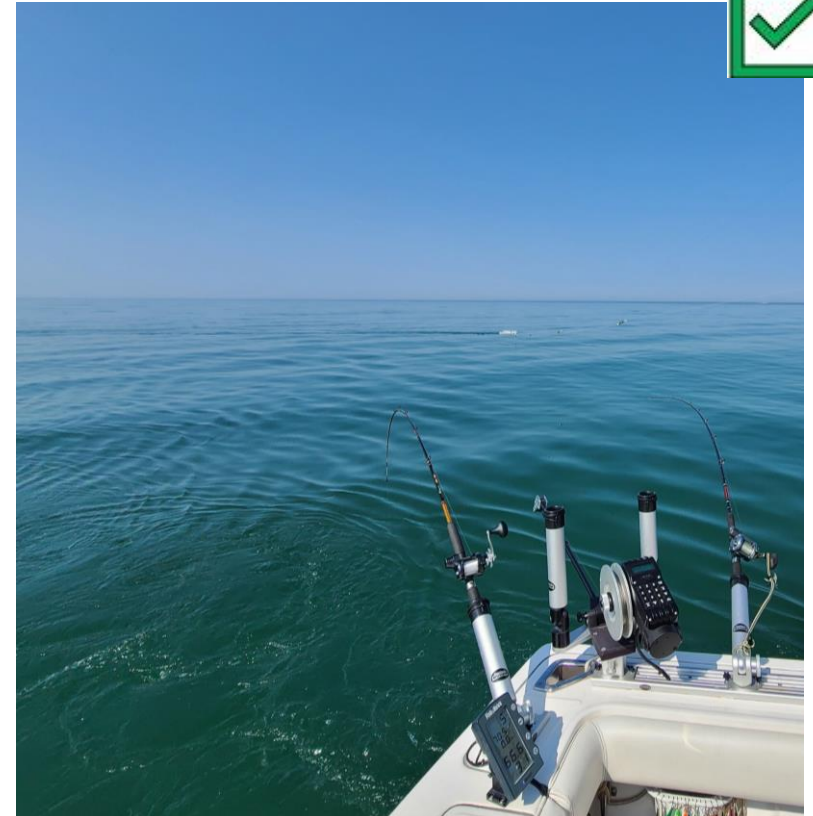


- Avoid murky/stained water – if you can

Stained water color

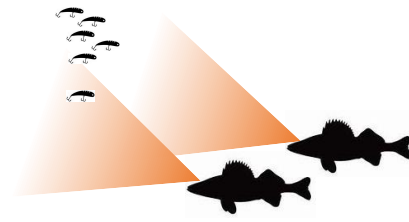


Good water color



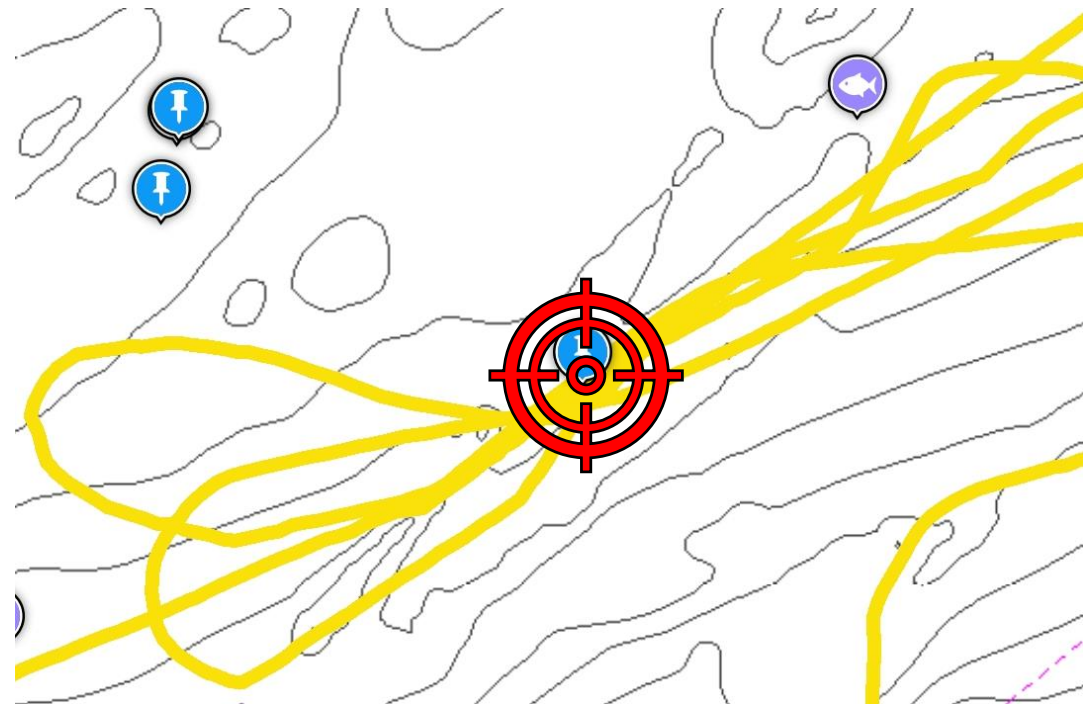
Spring Walleyes: Tactics & Tips

- Boat traffic matters



- Spot on spot fishing

- Chartplotter
 - Boat Tracks on
 - Wavepoints



Depth

58.0 ft

Summer Walleyes

Water

74.7° F

SOG

2.7 mph

25.0

45.0

65.0



High Chirp RV 3D Xdcr



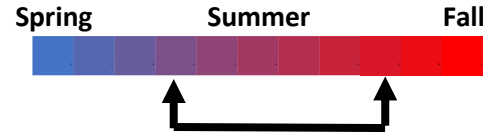
ZOOM



Summer Walleyes: Where to Go



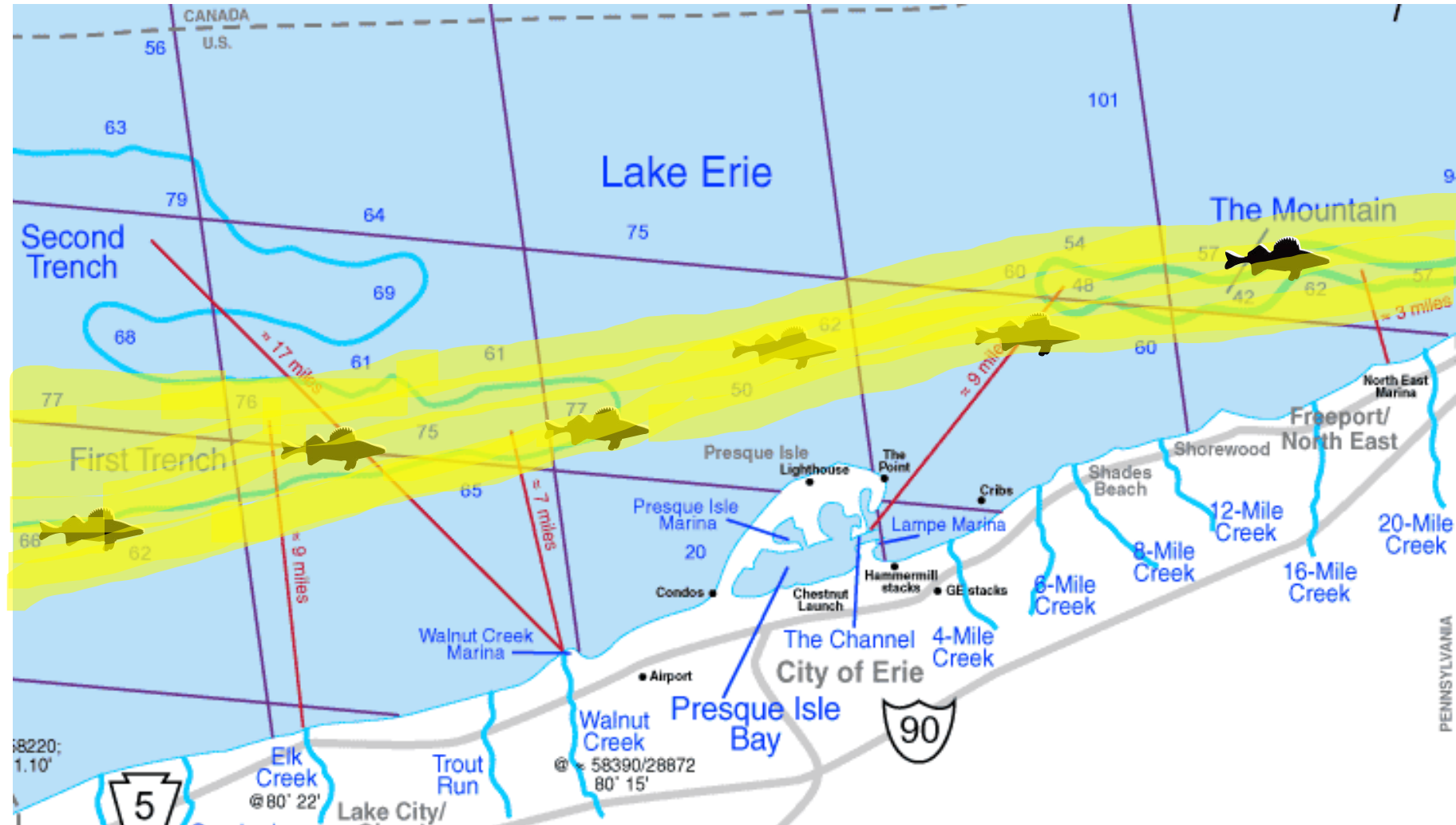
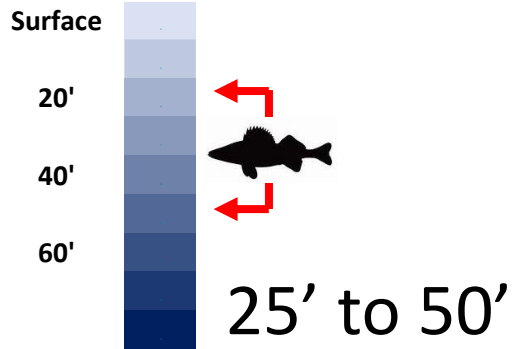
Time: Late June through August



Water Temps:
High 60s to 70s

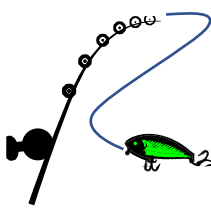
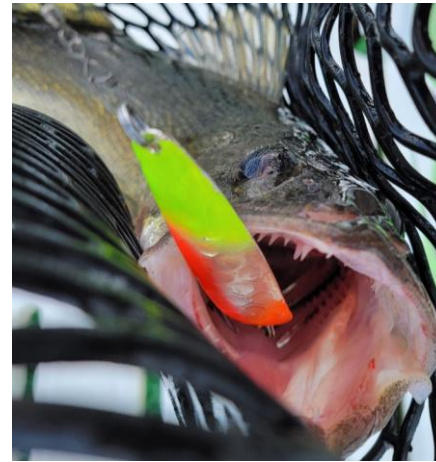


30 fow to 70 fow



Summer Walleyes: Techniques

- Home of the motherload... don't fall in!



- Planer boards

- Mono rods with medium to deep diving lures

- 125 to 200' back

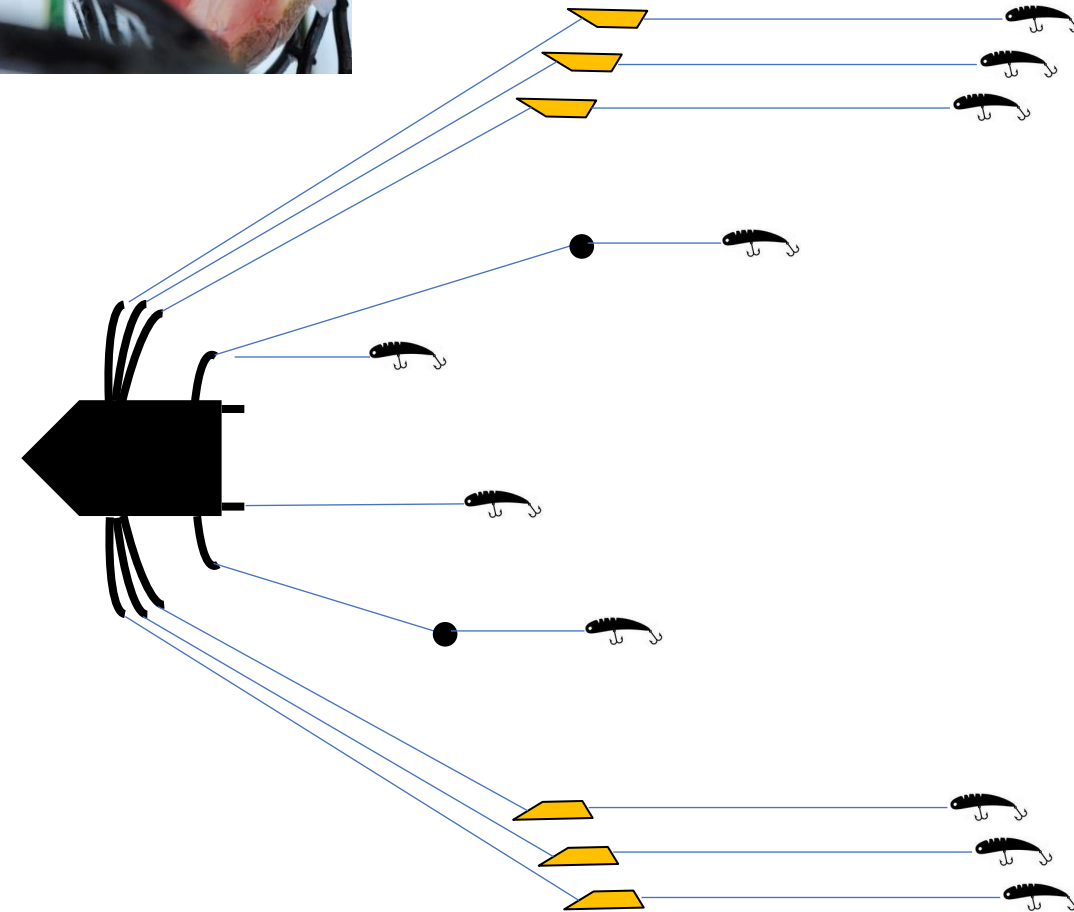


- Fish below 30' we will start to add weights

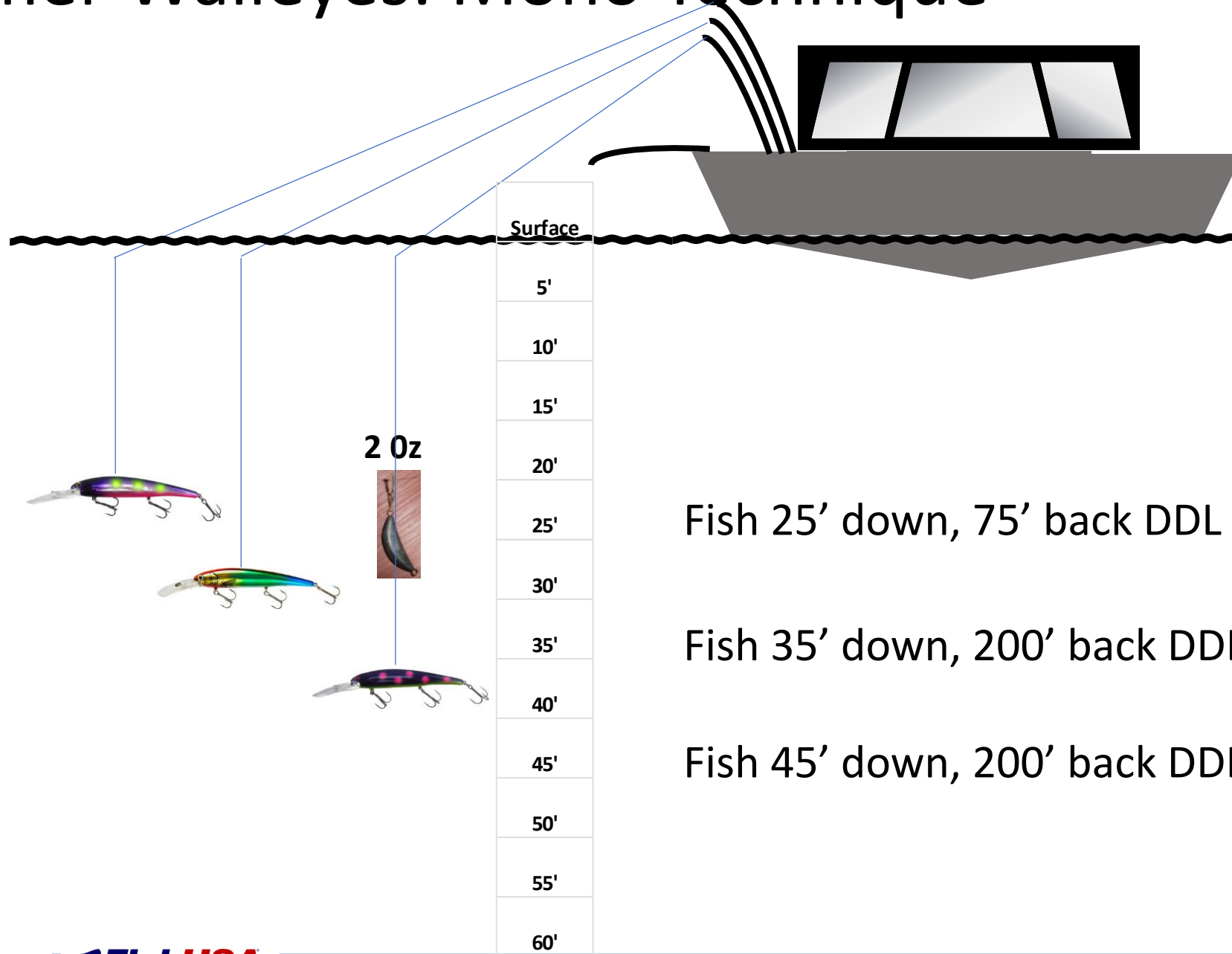
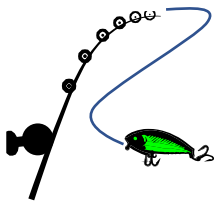


- Leadcores (5 cores)

- Pair with shallows, medium divers, deep divers



Summer Walleyes: Mono Technique

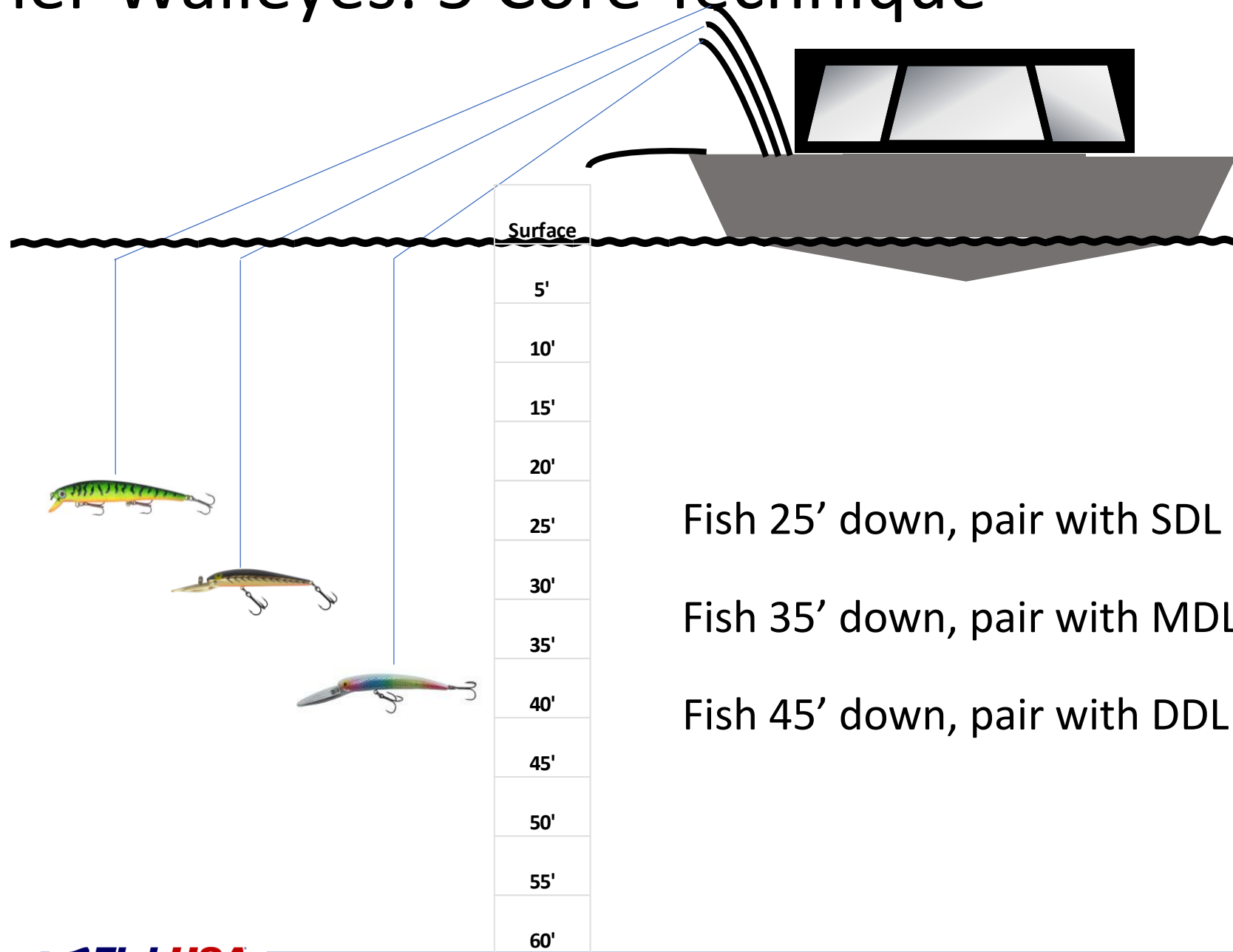
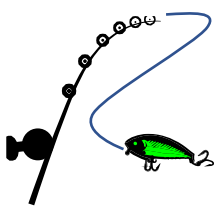


Fish 25' down, 75' back DDL

Fish 35' down, 200' back DDL

Fish 45' down, 200' back DDL + 2oz

Summer Walleyes: 5 Core Technique



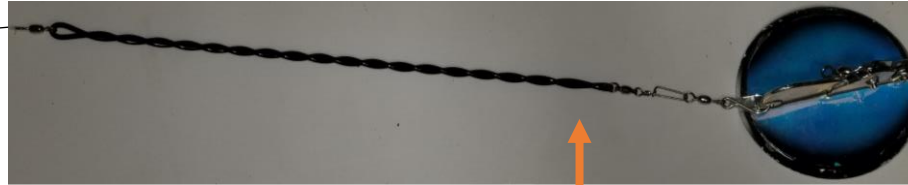
Fish 25' down, pair with SDL

Fish 35' down, pair with MDL

Fish 45' down, pair with DDL

Summer Walleyes: Techniques

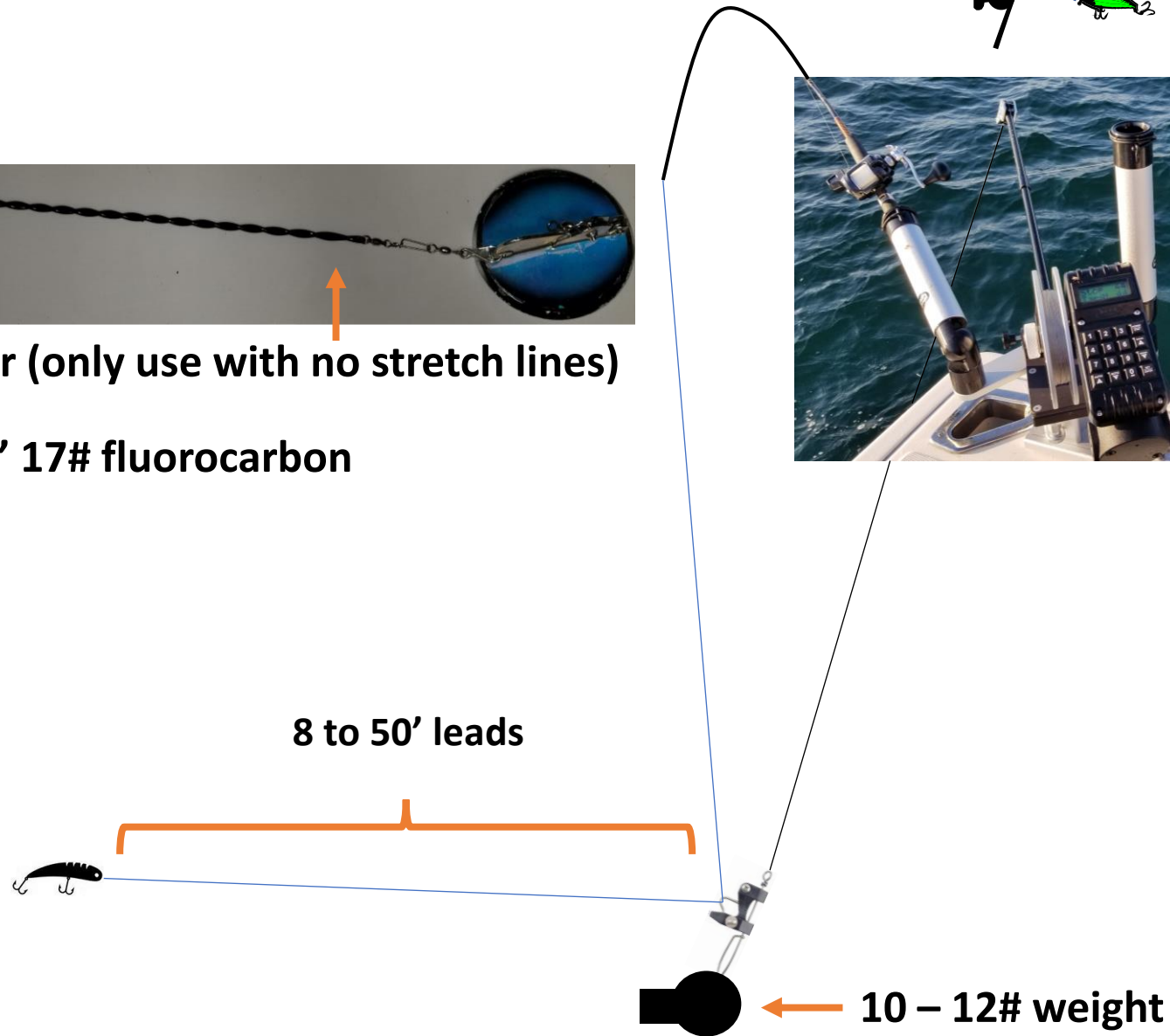
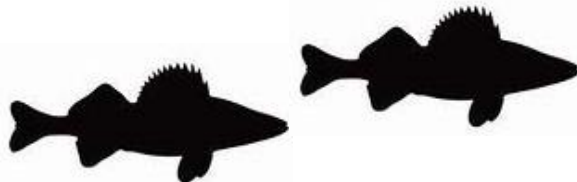
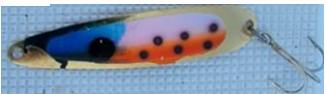
- Braid or wire DW Divers
 - 107mm Size 4 1.5 or 3 settings
 - 75' to 175' back



Snubber (only use with no stretch lines)

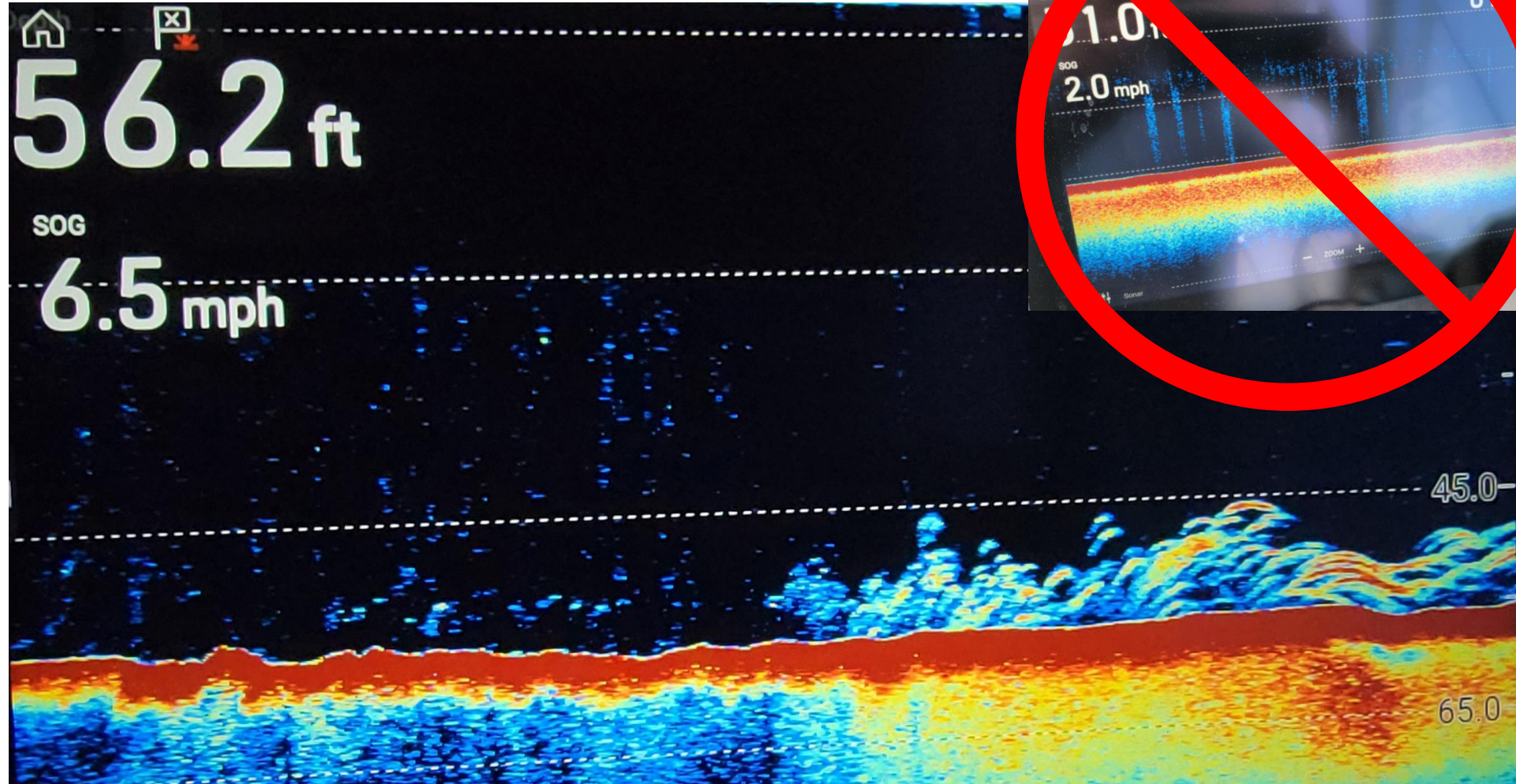
← 8+’ 17# fluorocarbon

- Riggers set to depth
 - Fish marks
 - Temperature profile
- DW Superslim sized spoons



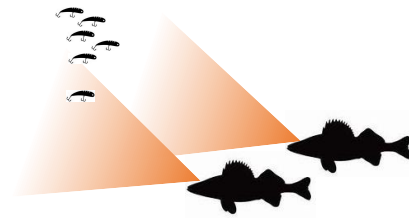
Summer Walleyes: Tactics & Tips

- Do not setup on a dead screen

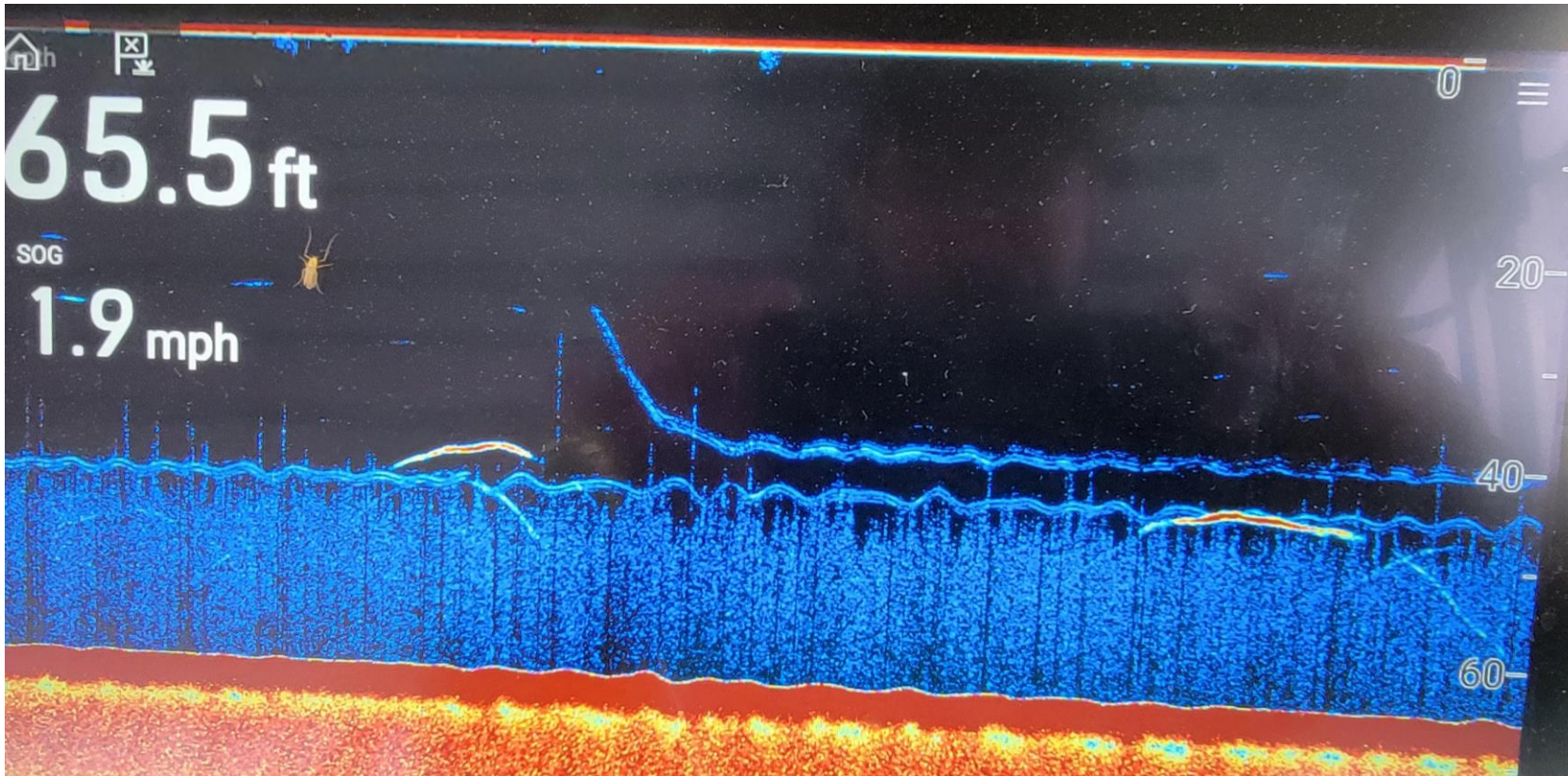


25 mph → 15 mph → 6 mph →

Summer Walleyes: Tactics & Tips

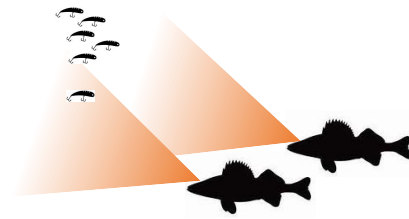
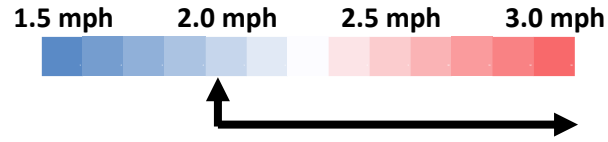


- Pay Attention: Stay in the marks
 - Are marks getting better or drying up?
 - Blank screens for extended periods of time means MOVE!



Summer Walleyes: Tactics & Tips

- Trolling speed 2.0+ mph

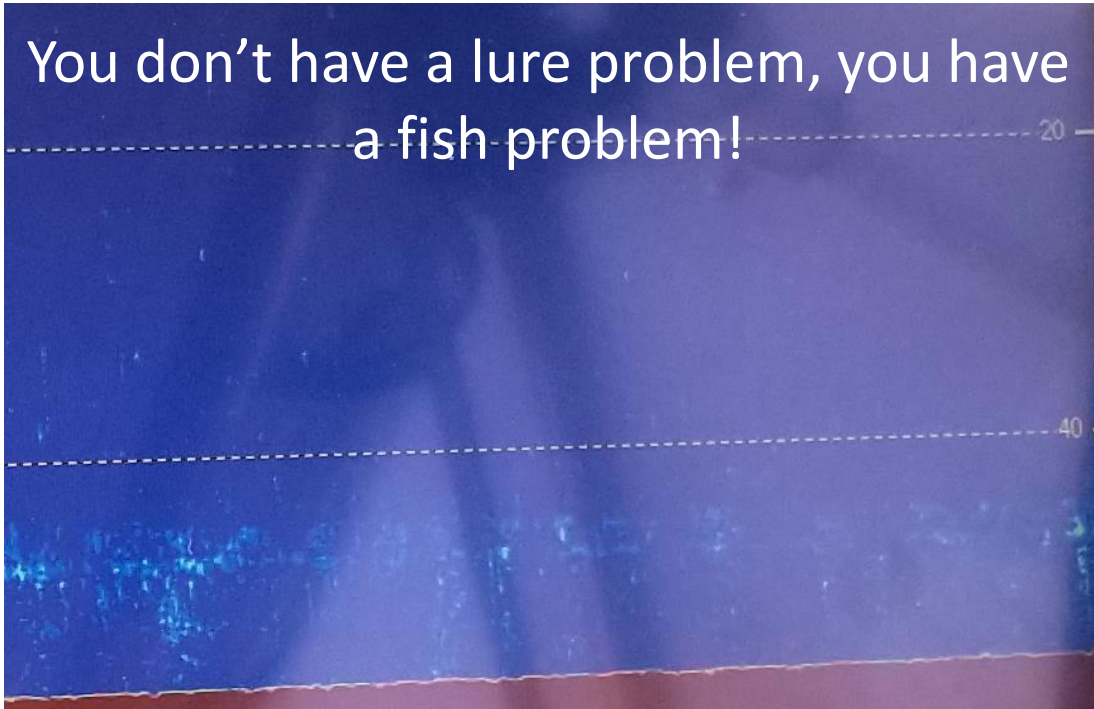


- Don't be afraid to troll fast...



- Setting up
- especially to get out of "dead" water

You don't have a lure problem, you have a fish problem!



Summer Walleyes: Tactics & Tips

- Don't be afraid to fish up high

- In the morning 

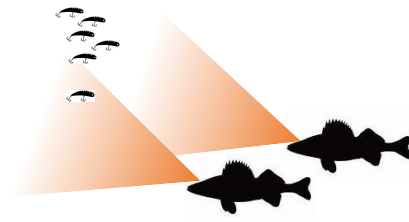
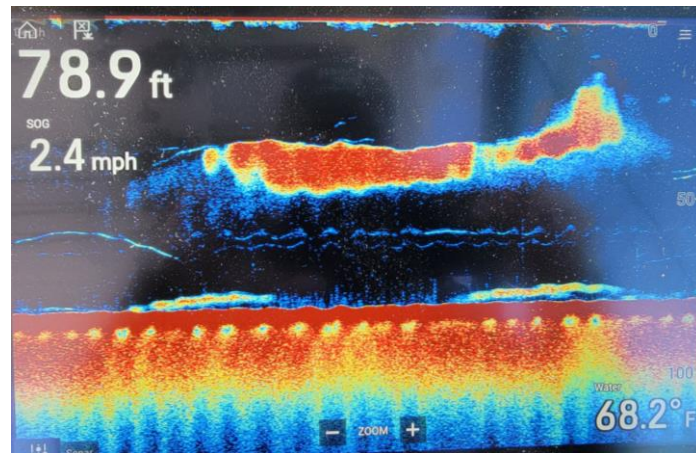
- Overcast conditions 

- Choppy conditions 

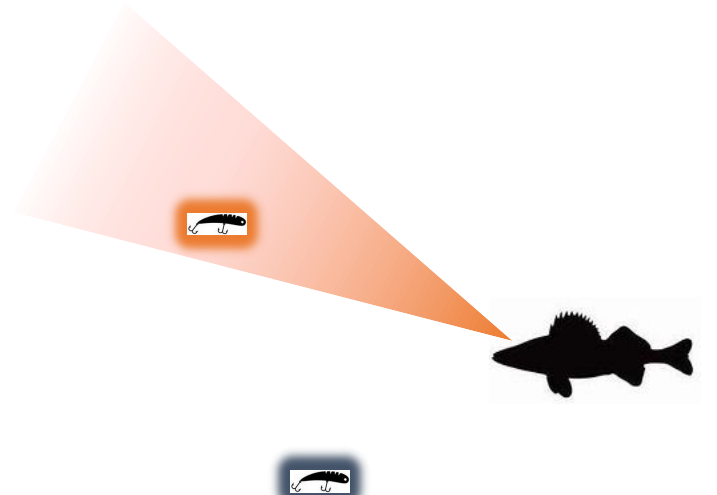
- After a blow 

- Birds 

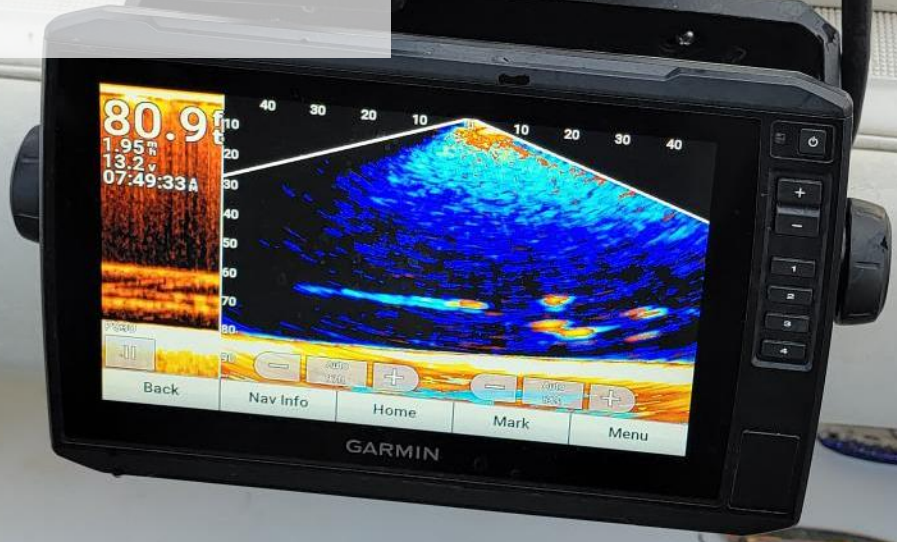
- High bait



You will likely not mark fish up high



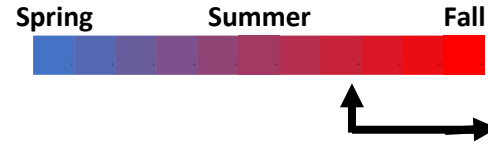
Fall Walleyes



Fall Walleyes: Where to Go



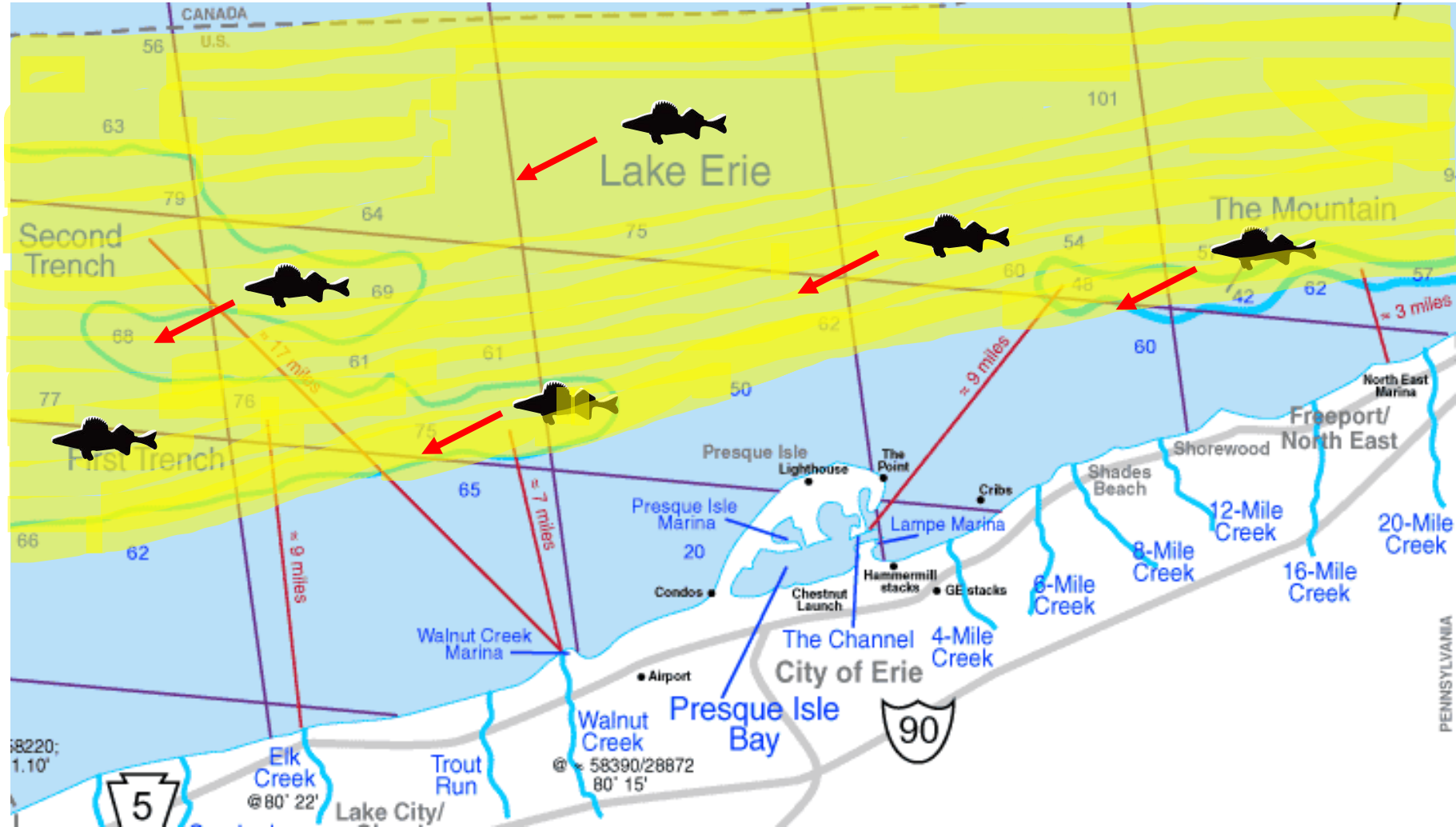
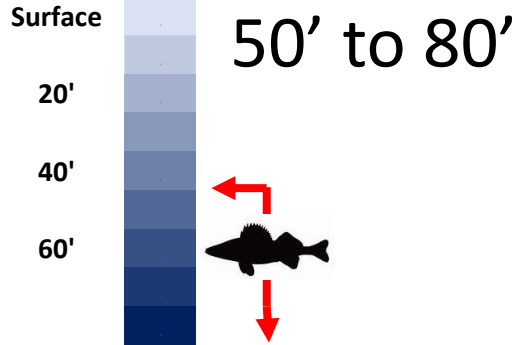
Time: September till they leave






Water Temps:
70s and dropping

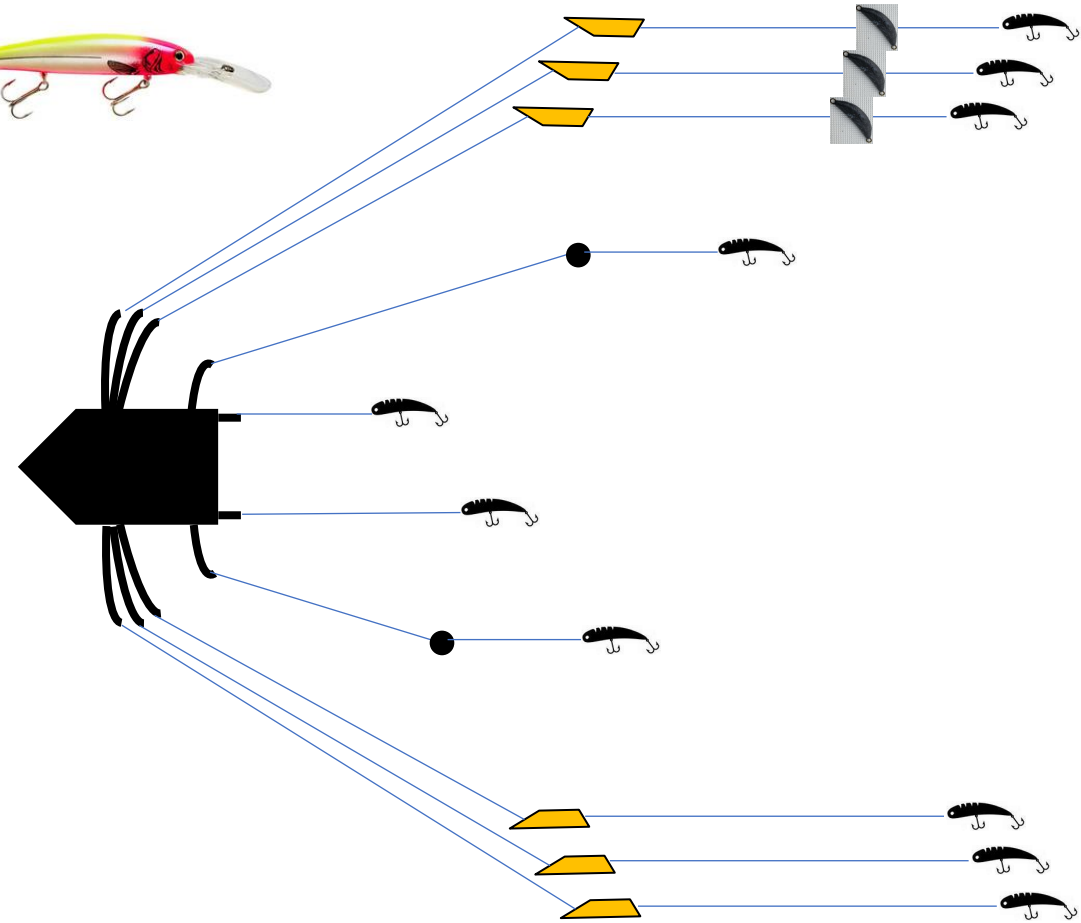
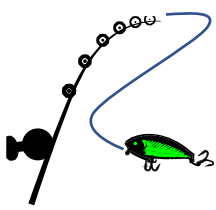


50 fow+



Fall Walleyes: Technique

- Deeper marks! 
- Planer boards
 - Mono rods with weight & deep diving lures
 - 200' back with weight 50' in front of lure 
- Leadcores (5, 7, 10 cores)
 - Pair with medium divers, deep divers
 - Add weights (2 to 5 oz), if needed 



Fall Walleyes: Technique

Double Braid or wire DW Divers

- 107 Size 4 1 or 3 settings
 - 100' to 250' back
- 124 Size 5 1 or "edge" settings
 - 100' to 200'



- Riggers set to depth
 - Fish marks
 - Temperature profile



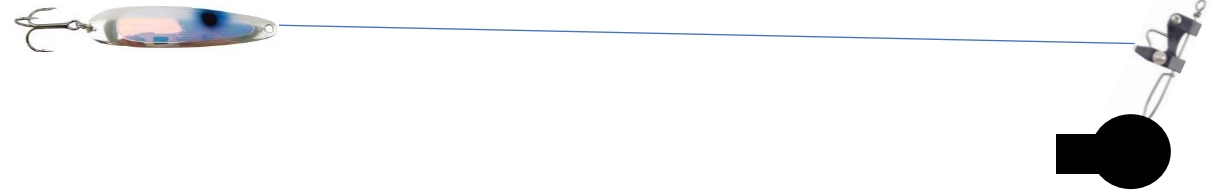
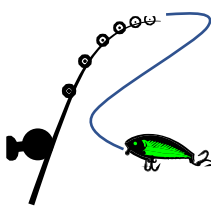
Signal Floor: 12		Depth (ft)	Temp (°F)
Blue Probe	Level 20 Batt -	65	68.0
Green Probe	Level 18 Batt -	78	68.0
Yellow Probe	Level 14 Batt -	60	68.0
Red Probe	Level 16 Batt -	70	68.0

Mag edge 200'

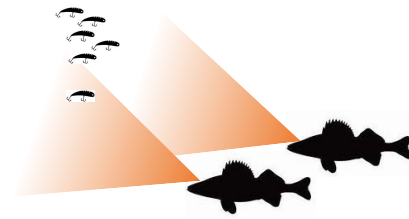
Mag 1 150'

Mag edge 180'

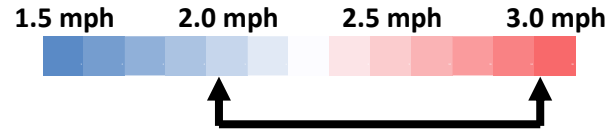
Mag 1 135'



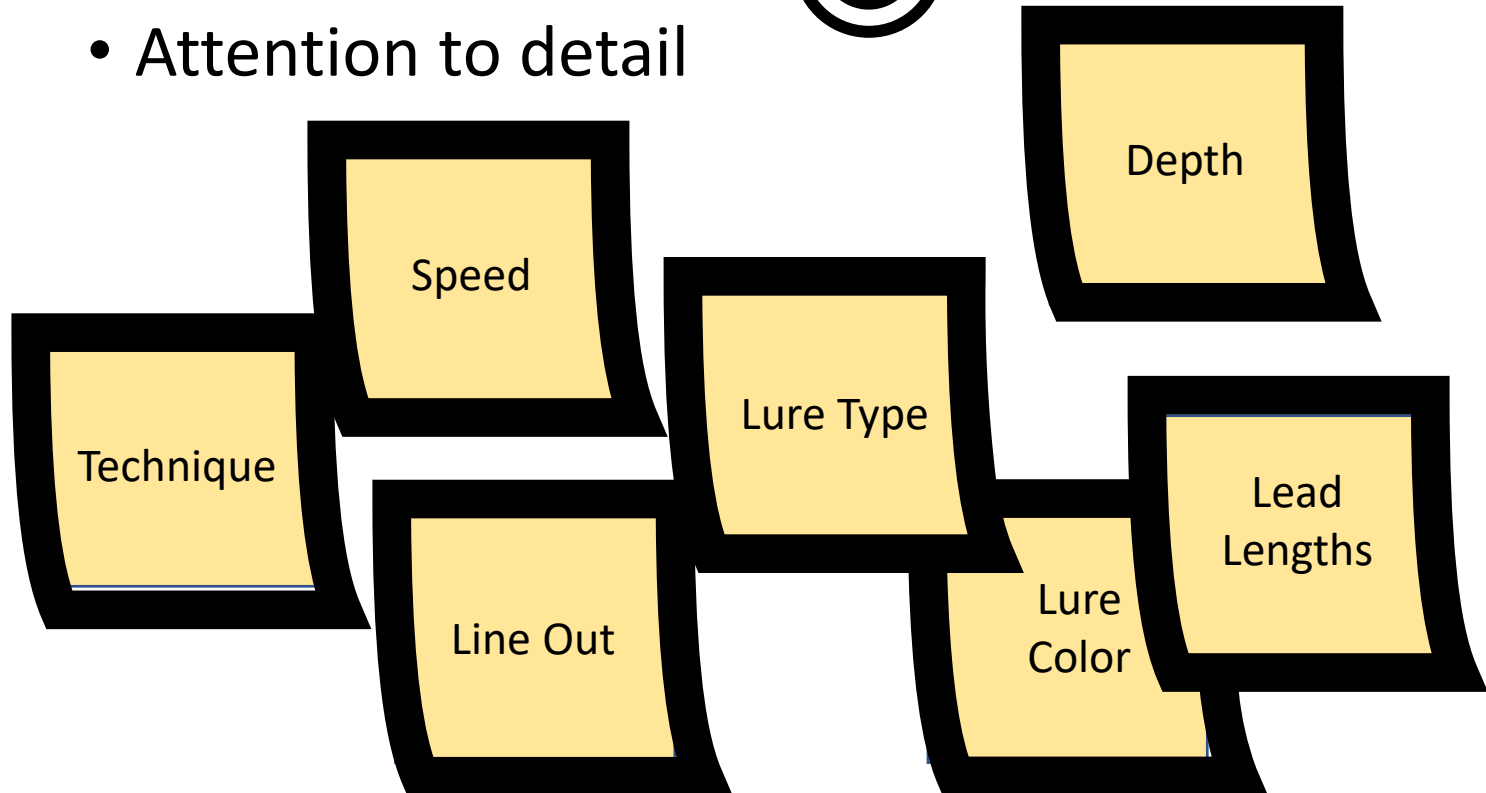
Fall Walleyes: Tactics & Tips



- Trolling speed 2.0 to 2.8 mph

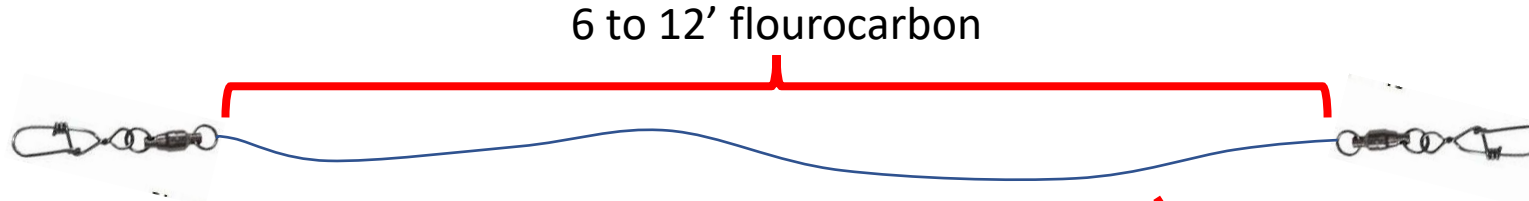
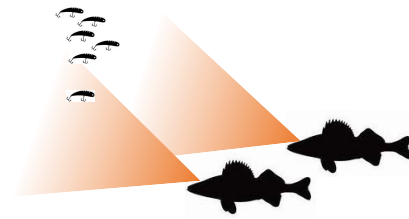


- Dial in the program!
 - Attention to detail



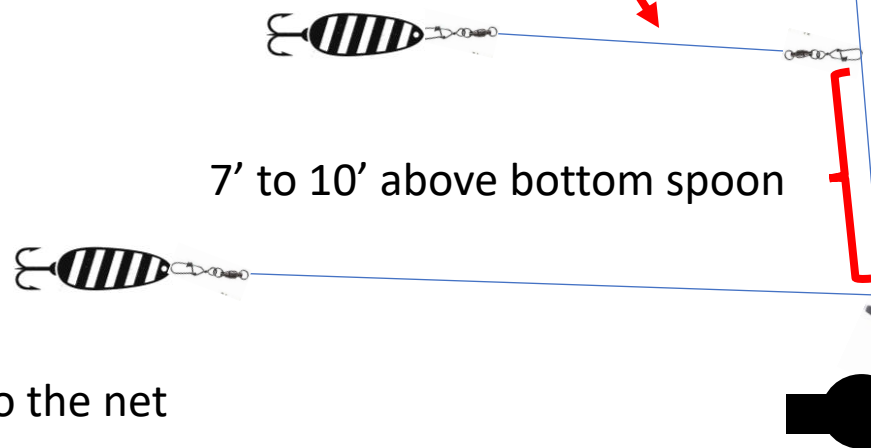
Fall Walleyes: Tactics & Tips

Free Slider Setup



How to deploy

1. Rig up bottom spoon as usual to release
2. Lower downrigger 7 to 10'
3. Grab the rigger rod main line and snap to line
4. Grab the spoon on the free slider and toss into the water
5. Lower the rigger to the desired depth

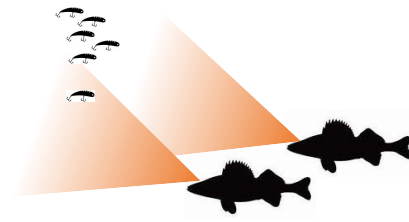


Notes

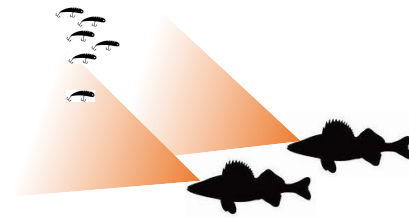
- Use when fishing 40'+
- Only use with spoons
- If fish is on the slider you may need to hand line to the net

Fall Walleyes: Tactics & Tips

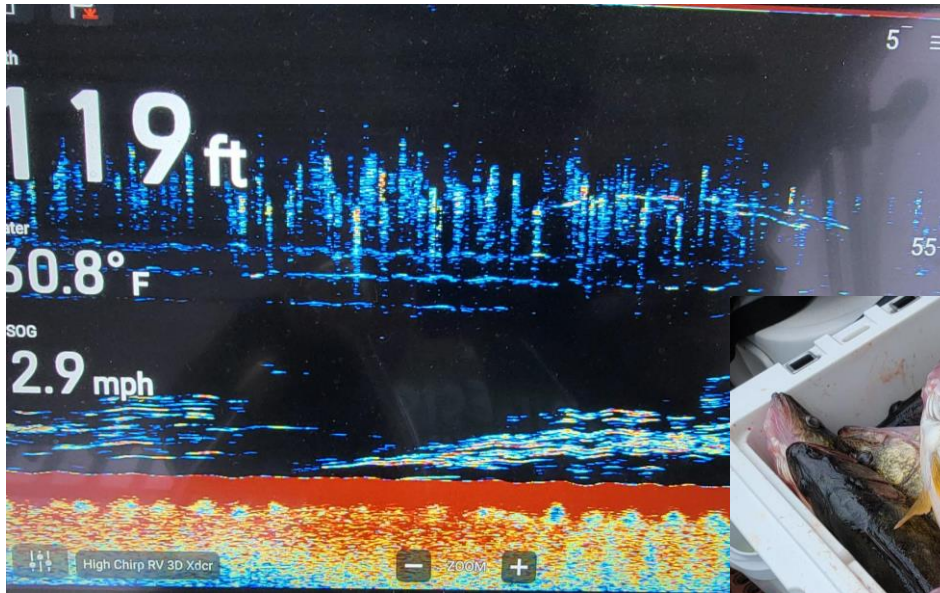
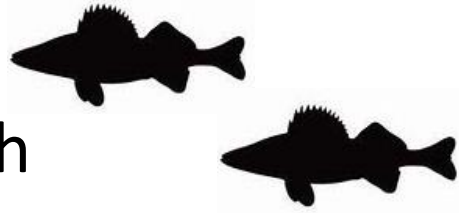
- Spend a little time (and gas 🛢️) finding fish
 - Fish are on the move back west
 - They may not be where you last left them!



Fall Walleyes: Tactics & Tips



- Find bait, find fish



Questions?

NemesisSportFishing@gmail.com

Also check out our on the water fishing reports on Facebook!

www.FishNemesis.com



<https://www.facebook.com/nemetsportfishing/>