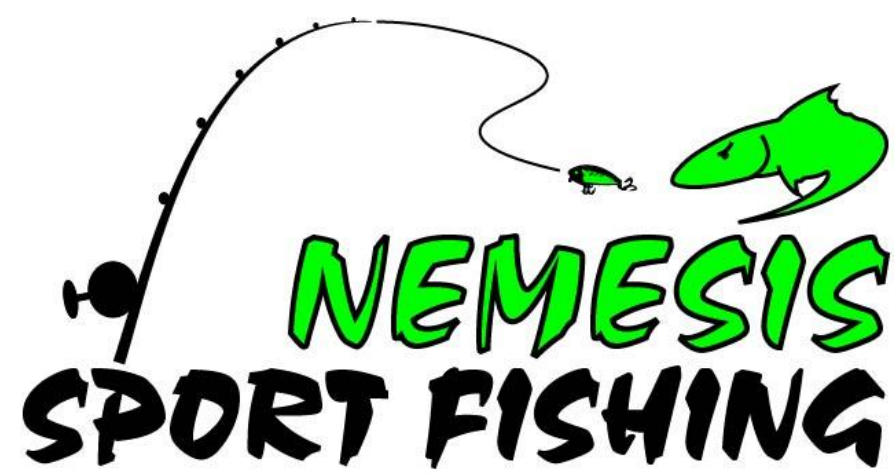


# Lure Logic

Stick baits to Spoons  for Successful Trolling

Erie, PA Charter Boat Association  
&  
Captain Joe Nemet  
Nemesis Sport Fishing



Home Ports: Erie, PA & Wilson, NY  
Boats: 3100 Tiara Open LE

 [www.FishNemesis.com](http://www.FishNemesis.com)

 <https://www.facebook.com/nemetsportfishing/>

Captain Joe Nemet

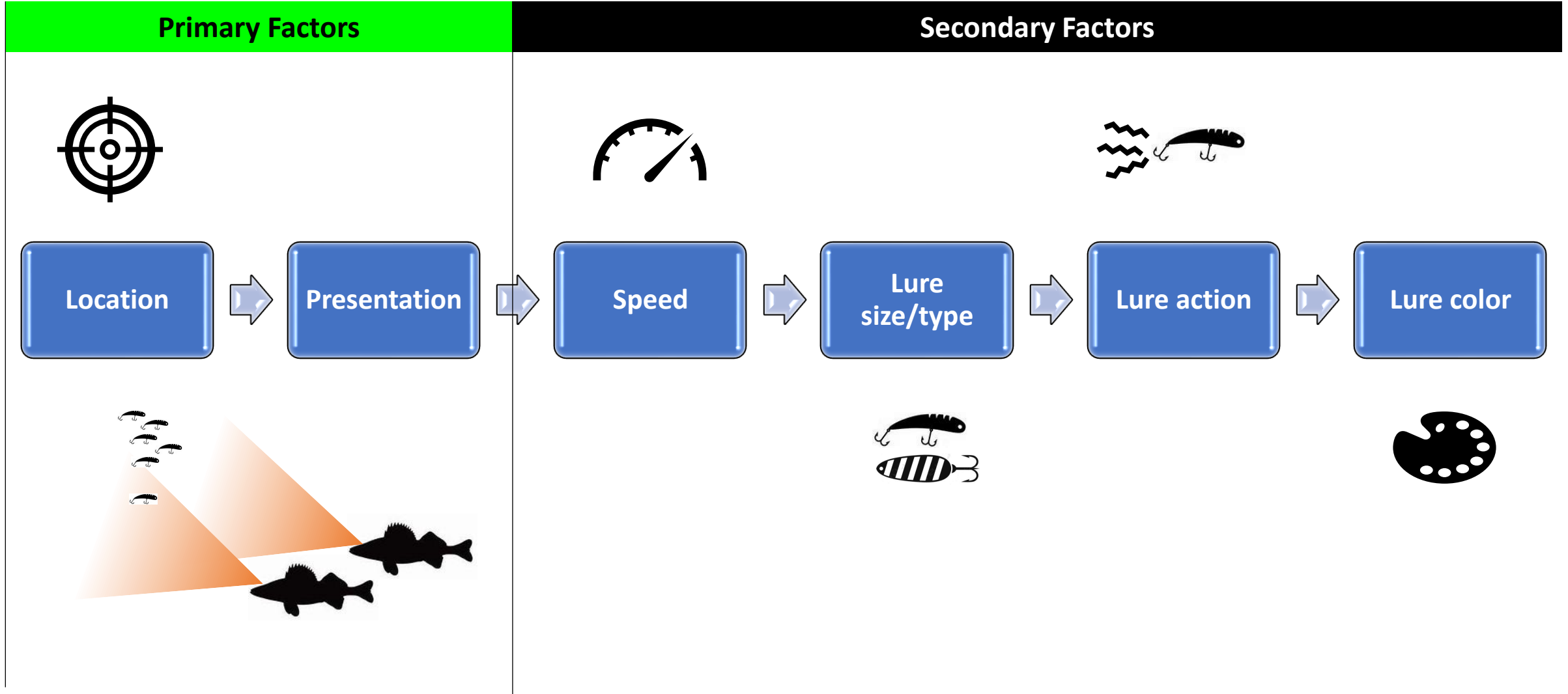
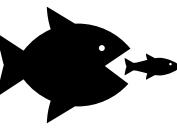


# Housekeeping

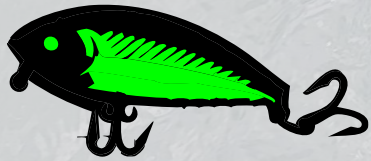
- Questions during the presentation
  - Chance to win one of several FishUSA gift cards



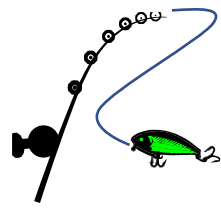
# Fishing Success Hierarchy



# Lure Types: Plugs



# Lure Types: Plugs



## Considerations

- Diving

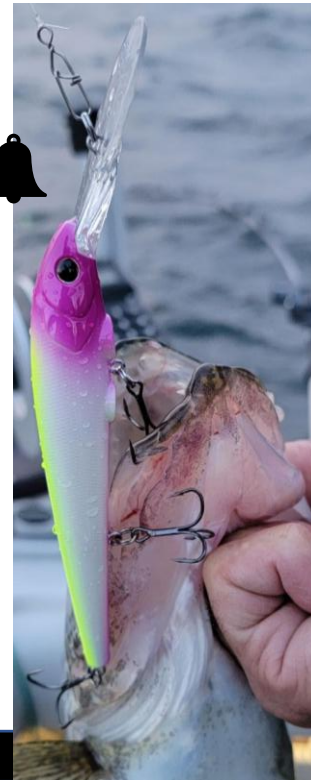
- Shallow



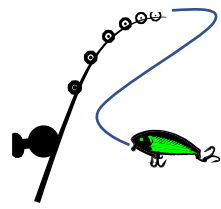
- Deep



- Sound



# Lure Types: Plugs



Subtle motion: Roll

## Considerations

- Action: Wobble/roll/kick/erratic

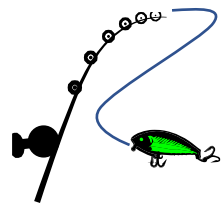


Scatter Rap



Aggressive motion: Roll/Kick/Hunt

# Lure Types: Plugs

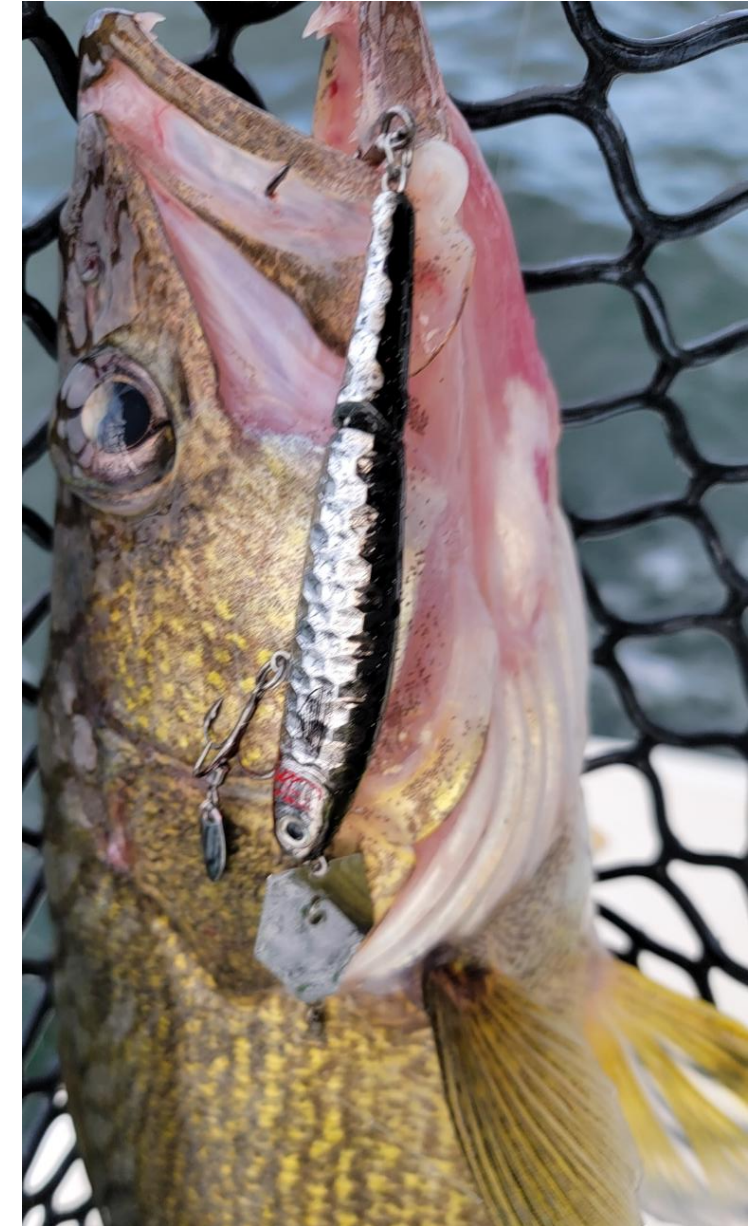


## Considerations

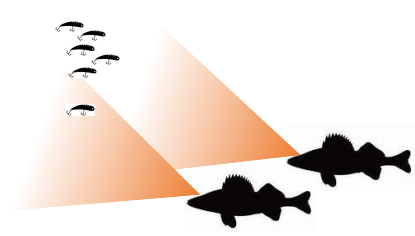
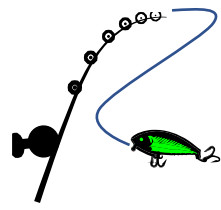
- Speed: most lures are speed tolerant < 4 mph  
! Tuning becomes very important at higher speeds



- Vibration: “Chatterbaits”

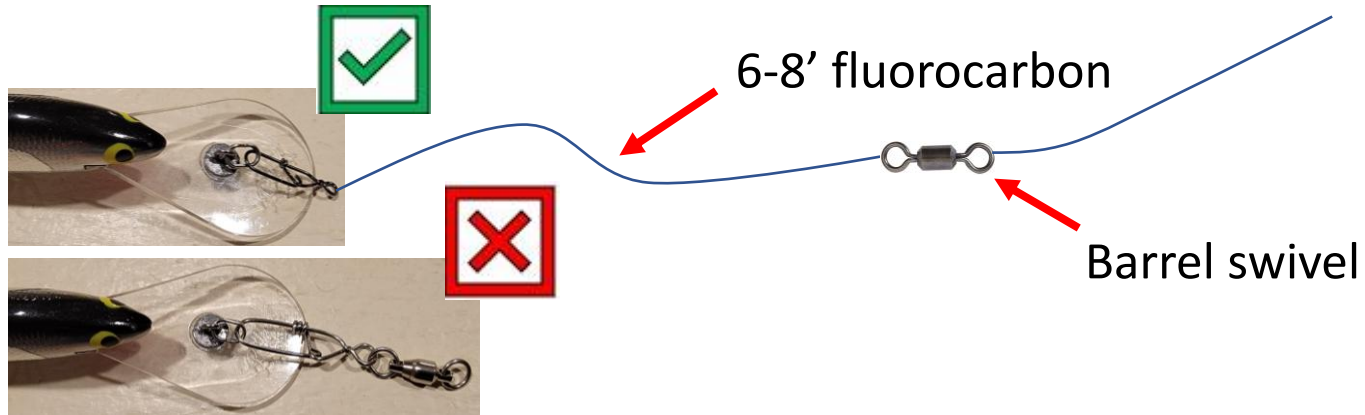


# Lure Types: Plugs



## Tips

- Use minimal connections



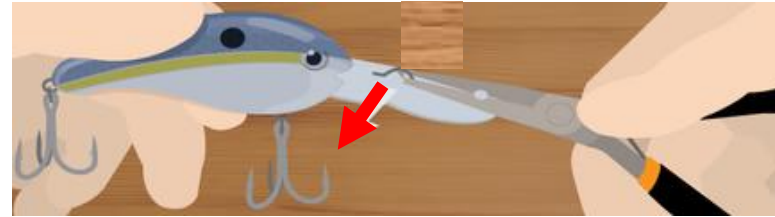
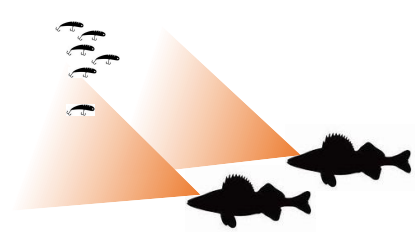
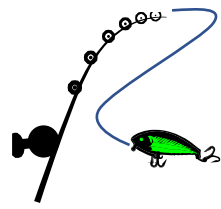
- Remove the front hook



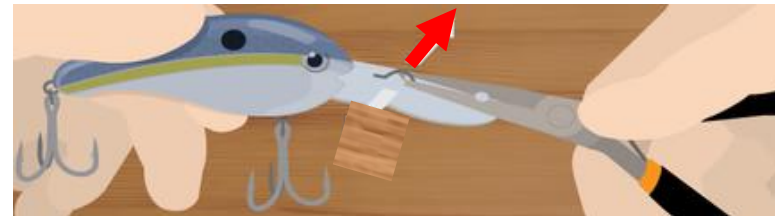
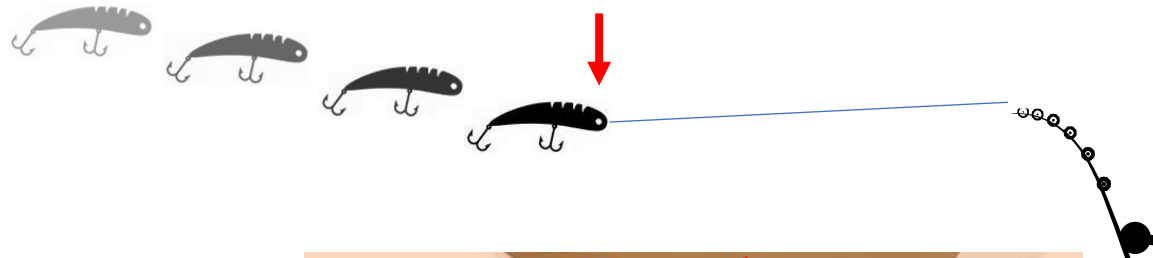
# Lure Types: Plugs

## Tips

- Tune lures at the dock



Lure pulling left,  
adjust opposite



Lure pulling right,  
adjust opposite

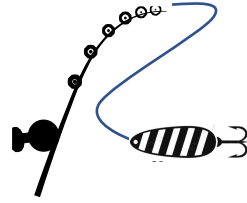


[How to Tune UP a Fishing Lure – wLure](#)

# Lure Types: Spoons



# Lure Types: Spoons



## Considerations

- Action: flutter
  - Tunable



← Pre-bent

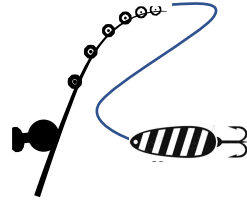
← Bendable

## • Speed

- Spoon weight & tunability become important
- Heavy spoons may have no action at lower speeds



# Lure Types: Spoons



## Considerations

- Back colors



Natural / any condition / high sun

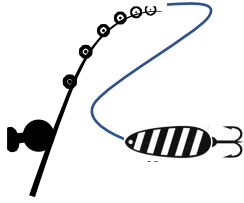


Morning/low light conditions



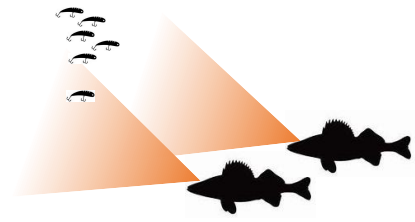
Low light/stained water/steelhead

# Lure Types: Spoons

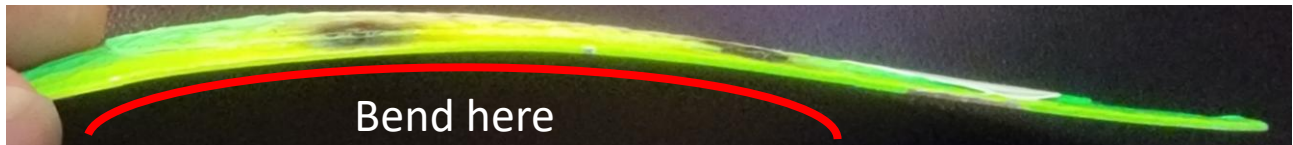
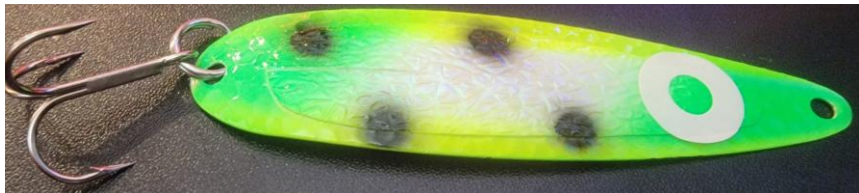


## Tips

- Use minimal connections
  - Small snaps/snap swivels



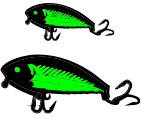
- Slow/fast trolling tune to trolling speeds (less than 1.5 mph, greater than 3.5 mph)
  - More bend for slower speeds



# Lure Attributes



# Lure Attributes: Size



Smallest



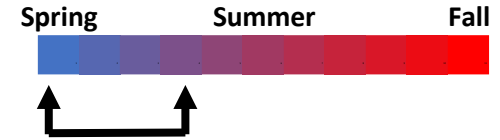
Biggest



- Match the hatch

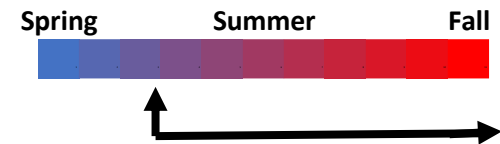
- Smaller lures

- Early season
- Lots of small fish around
- Fish higher in the water column



- Larger lures

- Mid to end of season
- Targeting bigger fish



# Lure Attributes: Colors



Lure color visibility changes with

- Water clarity

Stained water color



Good water color



Clear water



- Avoid murky water if possible!
- High visibility lures: white, fluorescents, black



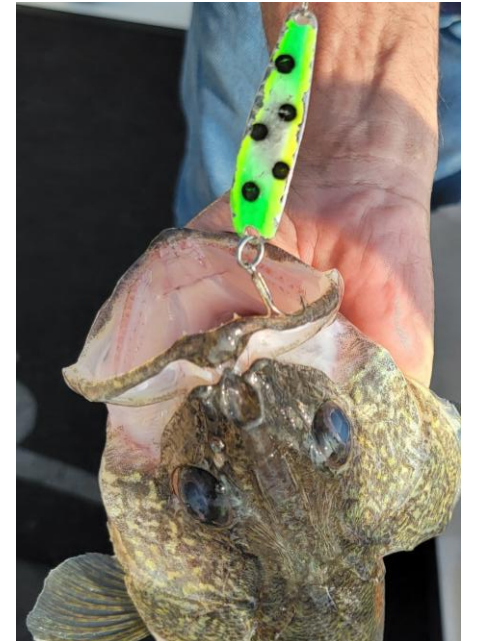
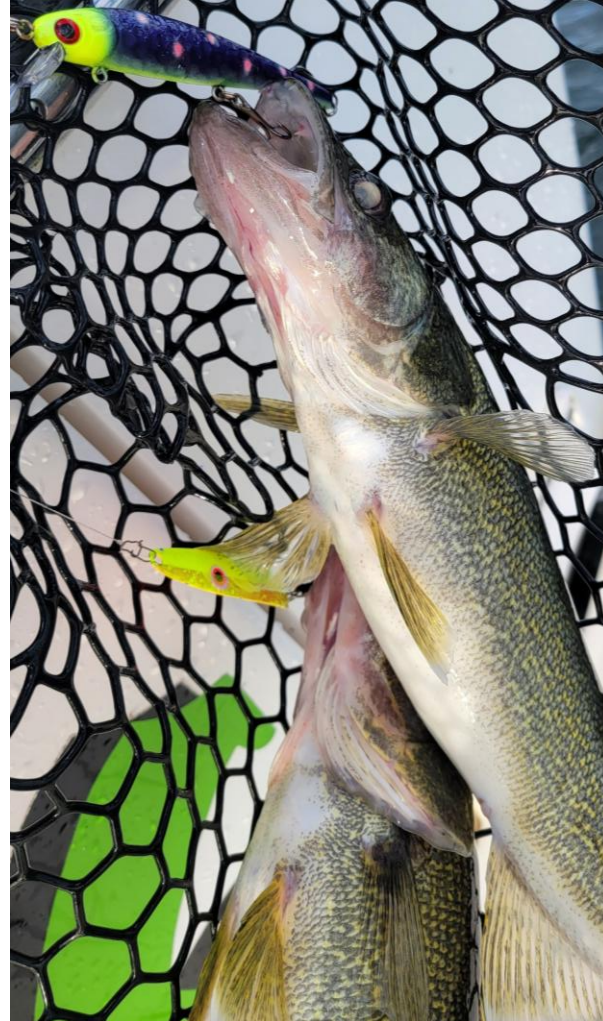
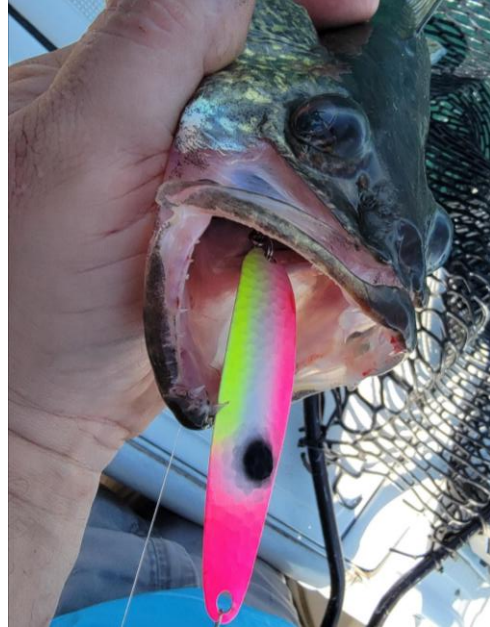
- Natural colors



# Lure Attributes: Colors

Lure color visibility changes with

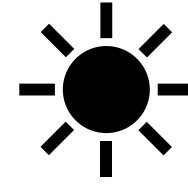
- Conditions: Morning/low light conditions



# Lure Attributes: Colors

Lure color visibility changes with

- Conditions: High Sun



Chrome bills →



# Lure Attributes: Colors



Lure color visibility changes with

- Depth



Typical walleye target depth range  
- Yellows, greens, blues, purples, fluorescent\*

\* True fluorescent colors will be more visible in lower light conditions

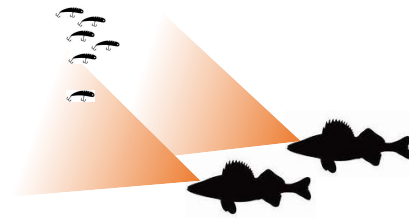
[Underwater Color Loss With GoPro 0 to 155 Feet Depth - Fishing Lure Deep Test](#)

# Lure Attributes: Colors

Lure color modifications

**GLOW**

- Conditions

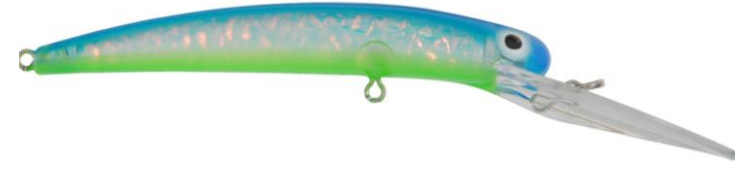
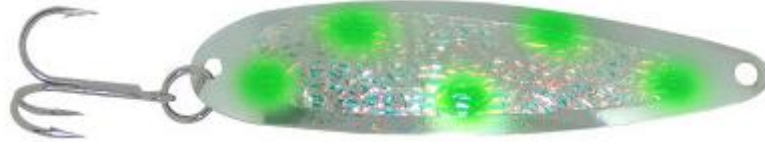
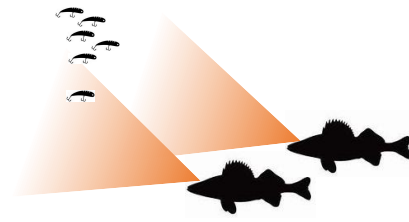
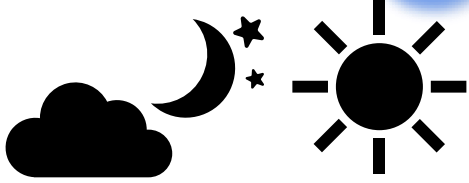


# Lure Attributes: Colors

Lure color modifications

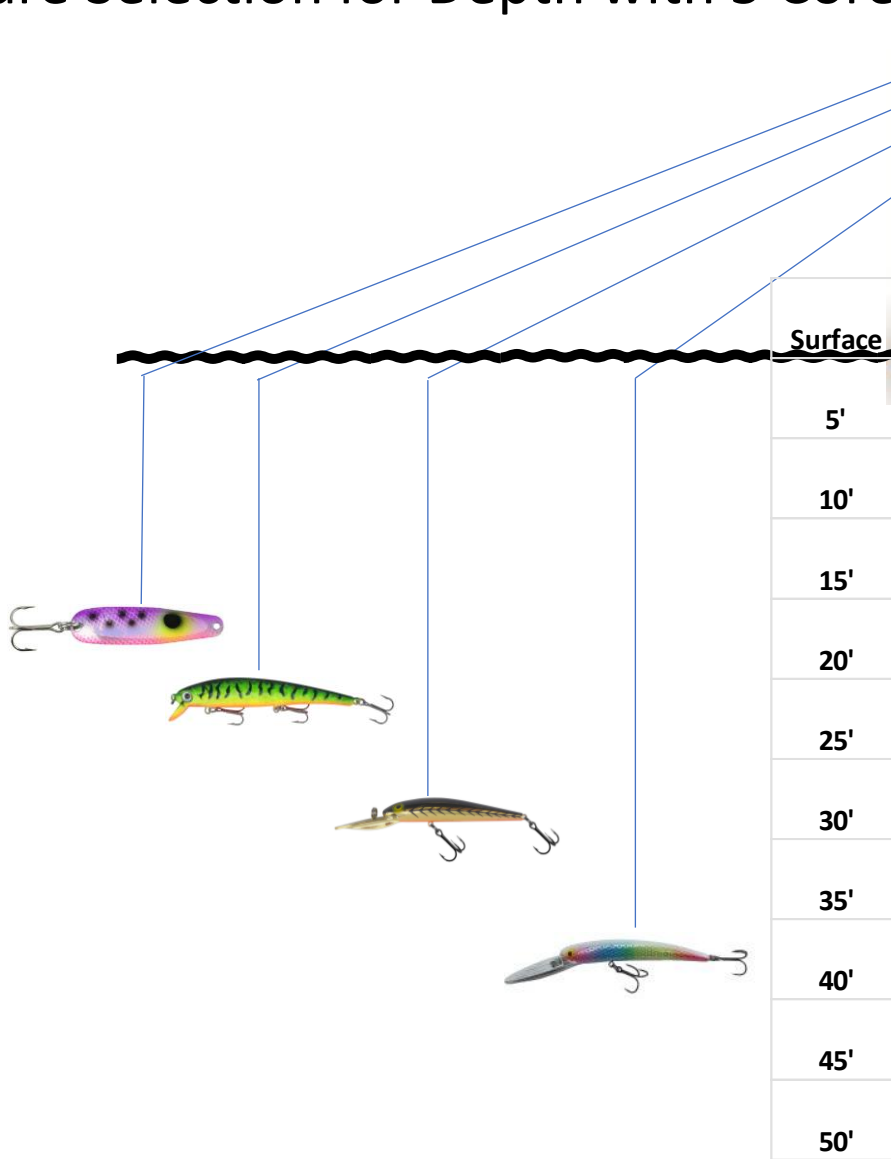
UV

- Conditions



# Lure Attributes: Diving Depths

Lure Selection for Depth with 5 Cores



Fish 20' down, pair with spoon

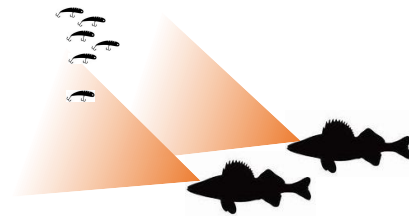
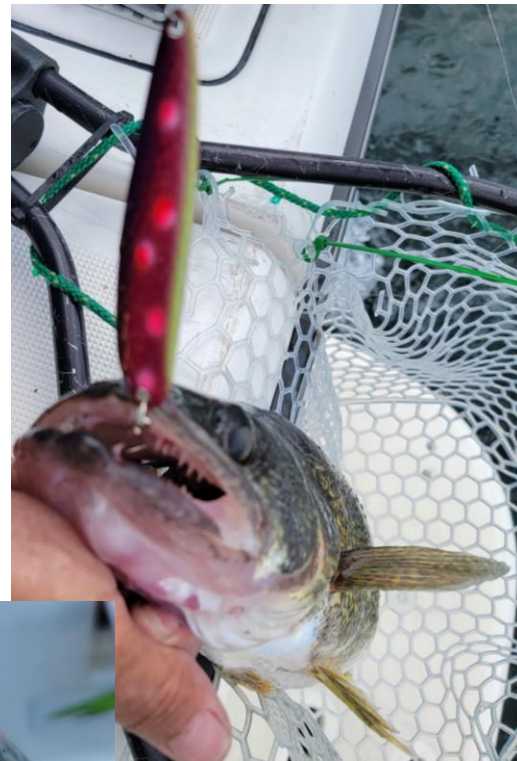
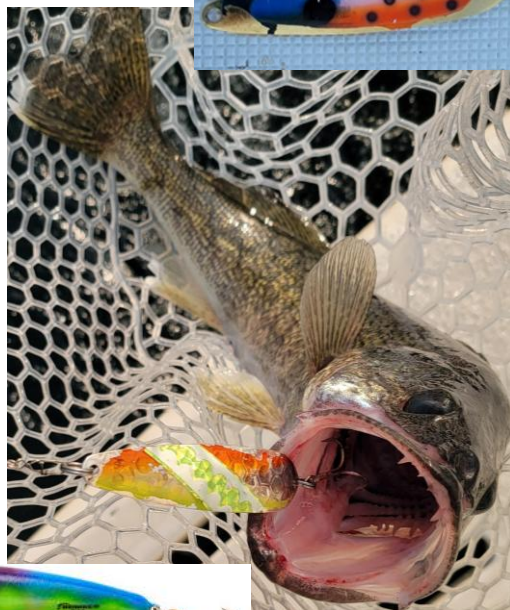
Fish 23-26' down, pair with shallow diving lure

Fish 27-33' down, pair with medium diving lure

Fish 34-40' down, pair with deep diving lure

# NEMESIS

## MVPs



# Charter Captain Favorites



Fire Tiger

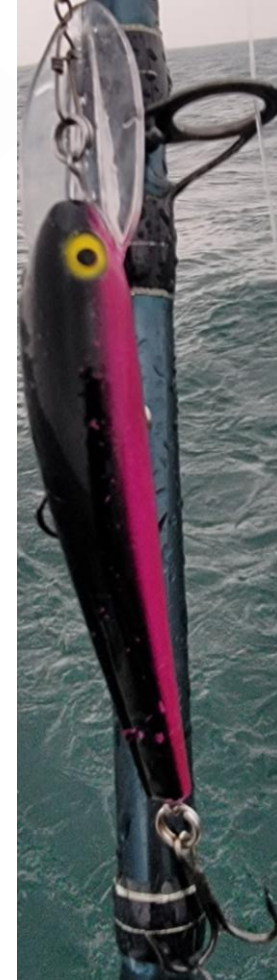


Rainbow Trout

Pink Purple



Lemonade Crush



The Machine



Greasy Chicken

# Questions?



[NemesisSportFishing@gmail.com](mailto:NemesisSportFishing@gmail.com)

Also check out our on the water fishing reports on Facebook!

[www.FishNemesis.com](http://www.FishNemesis.com)



<https://www.facebook.com/nemetsportfishing/>